



Pupil Place Pressures

Scrutiny Committee February 2019

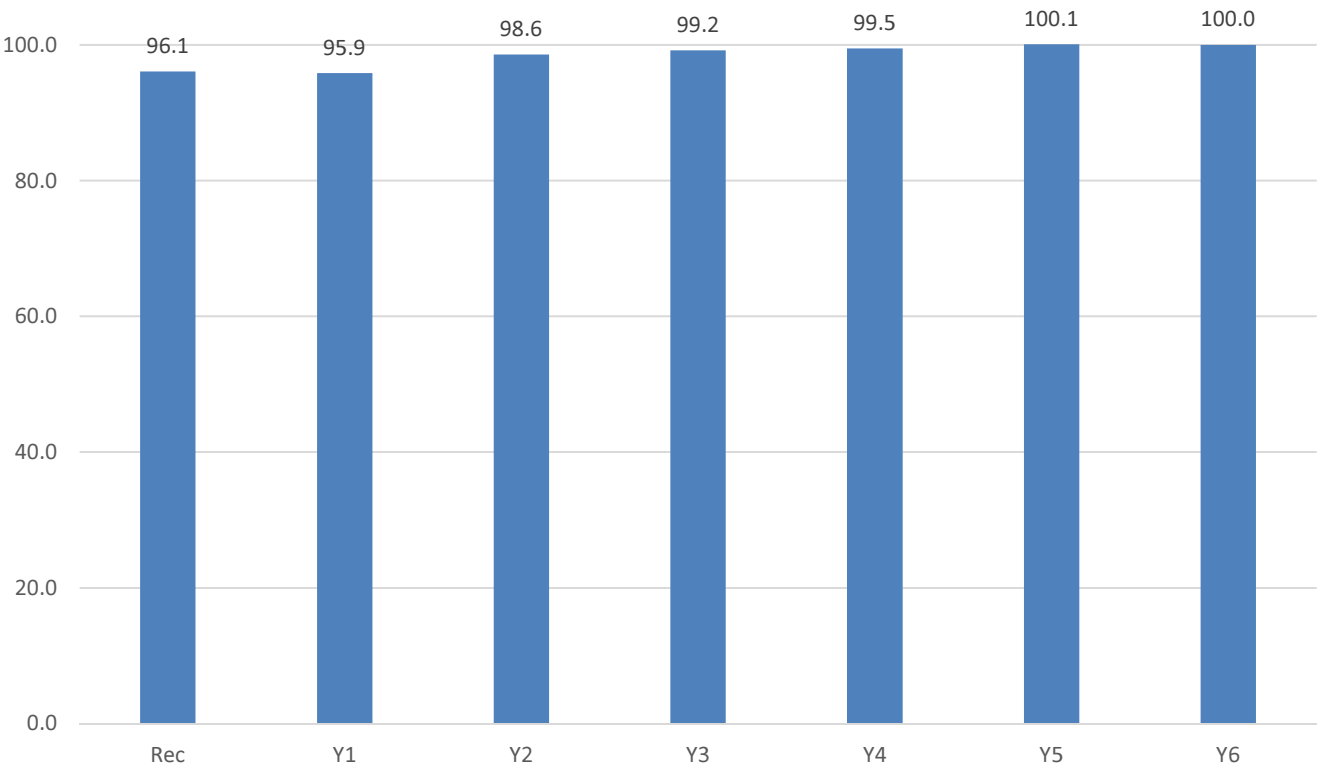
Ged Kelly – Capital Programme Manager, People Services



Primary Pupil Pressures

Current Pressures

Primary Pupils as a Percentage of PAN Capacity – as at Dec 2018



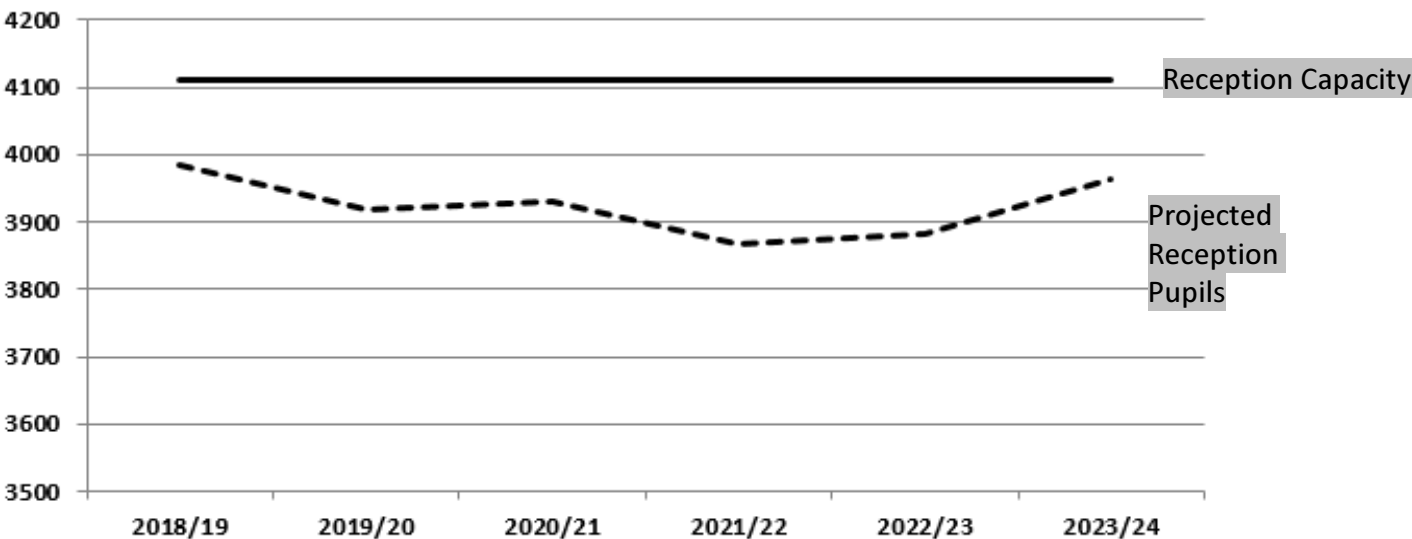
There is limited available capacity in KS1 (Rec – Y2) but KS2 (Y3 – Y6) is effectively full. Many schools are operating with cohorts above PAN across KS2 where infant class size limits do not apply.



Primary Pupil Pressures

Projected Intakes - Borough

	2018/19	2019/20	2020/21	2021/22	2022/23	2023/24
Projected Intake	3985	3917	3930	3868	3881	3964
Intake Capacity	4110	4110	4110	4110	4110	4110
Surplus	125	193	180	242	229	146

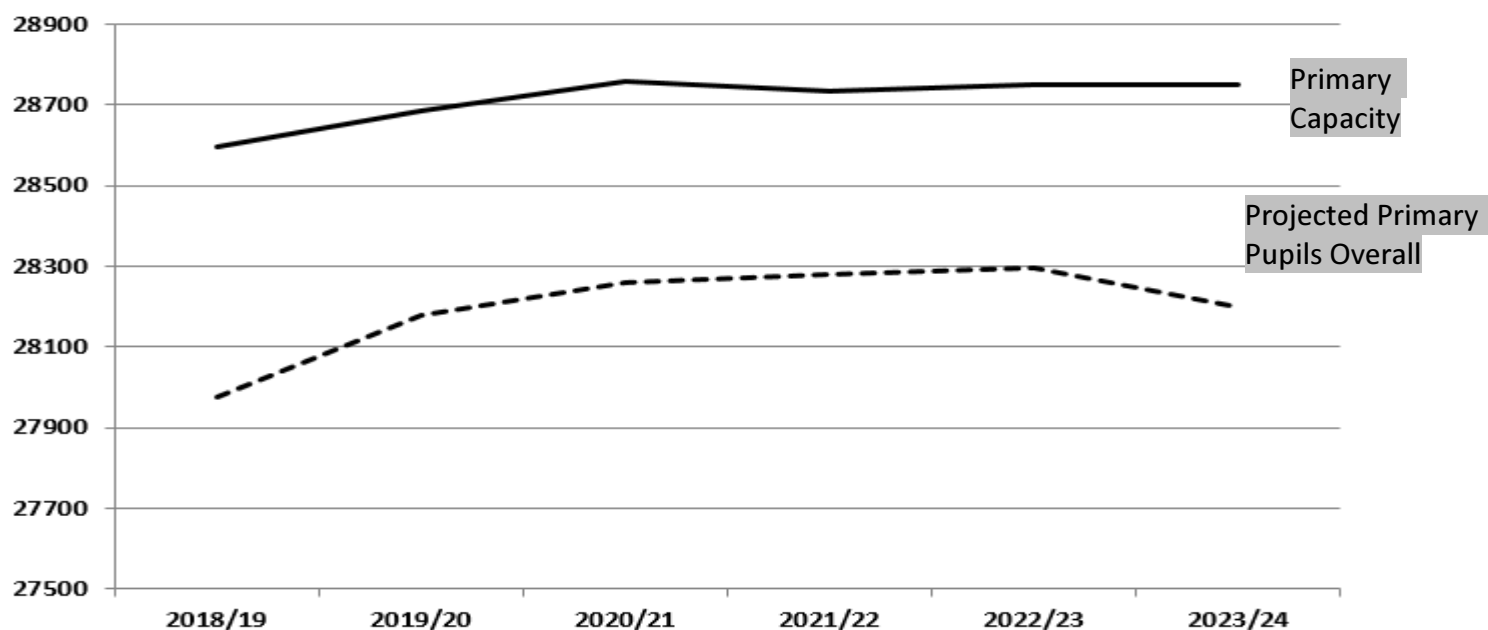


Looking ahead, across the borough there appears to be sufficient Reception capacity to meet immediate future demand into Reception

Primary Pupil Pressures

Projected Numbers on Roll - Borough

	2018/19	2019/20	2020/21	2021/22	2022/23	2023/24
Projected NOR	27975	28177	28259	28281	28298	28198
Projected Capacity	28595	28685	28760	28735	28750	28750
Surplus	620	508	501	454	452	552



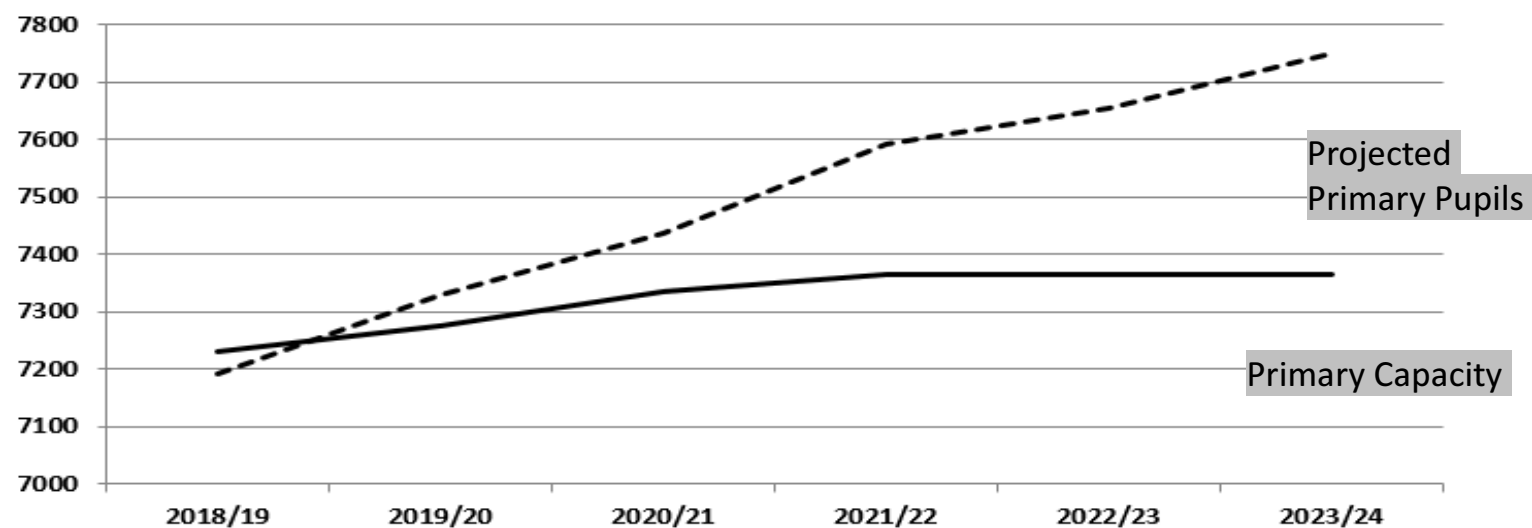
Overall there appears to be sufficient capacity to meet the needs of all children requiring a school place, although at less than 2%, it is expected to be tight. Moreover, future demand is not evenly distributed across the borough.



Primary Pupil Pressures

Pressures are expected to be greater in the central areas of the borough and less so on the periphery, as illustrated below which shows the projected primary pupils in the North and Central area

	North & Central					
	Astley Bridge, Bromley Cross, Halliwell & Heaton					
	Prepared after the May 2018 pupil census					
	2018/19	2019/20	2020/21	2021/22	2022/23	2023/24
Projected NOR	7190	7328	7436	7591	7654	7750
Projected Capacity	7230	7275	7335	7365	7365	7365
Surplus	40	-53	-101	-226	-289	-385





Primary Pupil Place Pressures

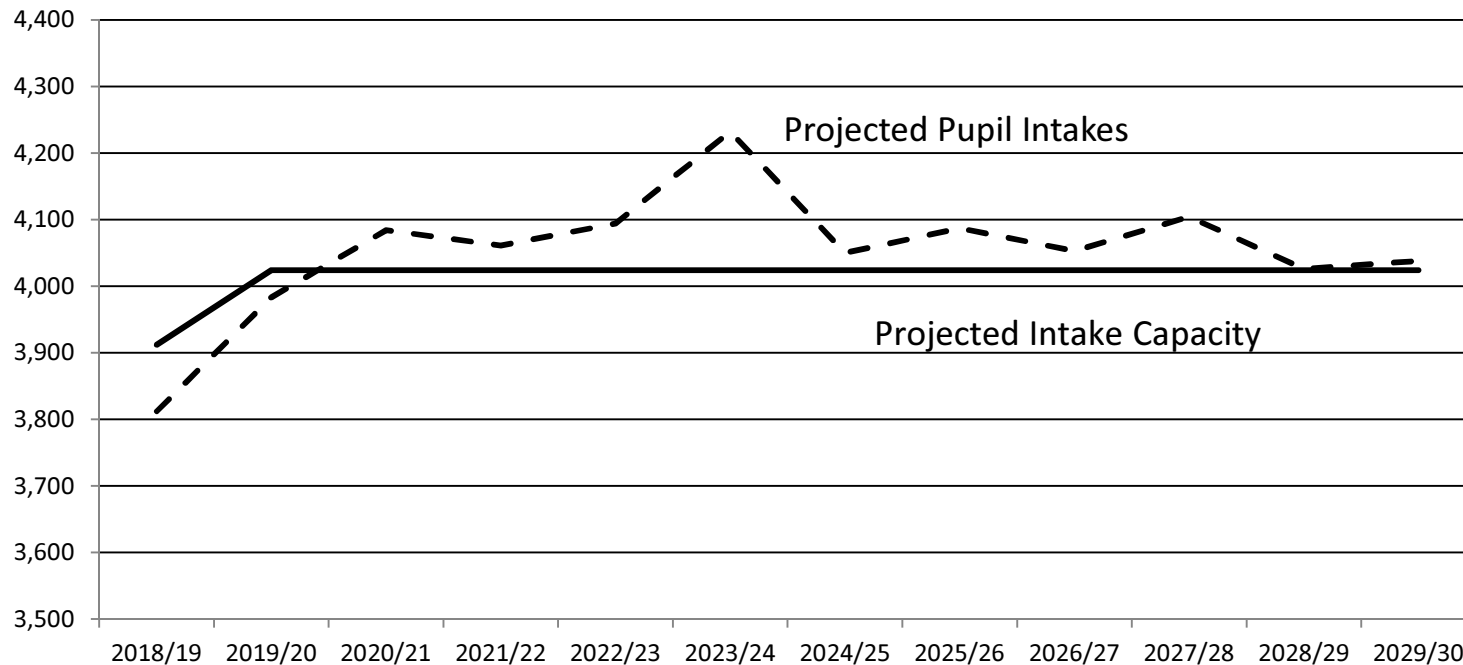
Proposed Solutions

- On the 21st January 2019 the Executive Member for Children's Services approved the expansion of the following primary schools:
- Gaskell CP School to create an additional 105 places;
- Ss Osmund & Andrew RCP to create an additional 70 places;
- Bolton St Catherine's CE Academy to create an additional 120 places;
- Equating to an additional 295 primary school places at an estimated cost of around £3.4M supported from DfE Basic Need capital funding and expanding all 3 schools to offer full 2FE provision;
- Further opportunities to expand Gilnow CP, Markland Hill CP and Moorgate CP are also presently being considered;
- Proposed new 2FE Primary Free School proposed by the DfE to open by September 2020 in the south of the borough;

Secondary Pupil Projections

Y7 Intakes

	2018/19	2019/20	2020/21	2021/22	2022/23	2023/24	2024/25	2025/26	2026/27	2027/28	2028/29	2029/30
Borough Y7 Capacity	3,912	4,024	4,024	4,024	4,024	4,024	4,024	4,024	4,024	4,024	4,024	4,024
Secondary Y7 Projections	3,812	3,983	4,084	4,061	4,094	4,232	4,050	4,087	4,053	4,104	4,026	4,038



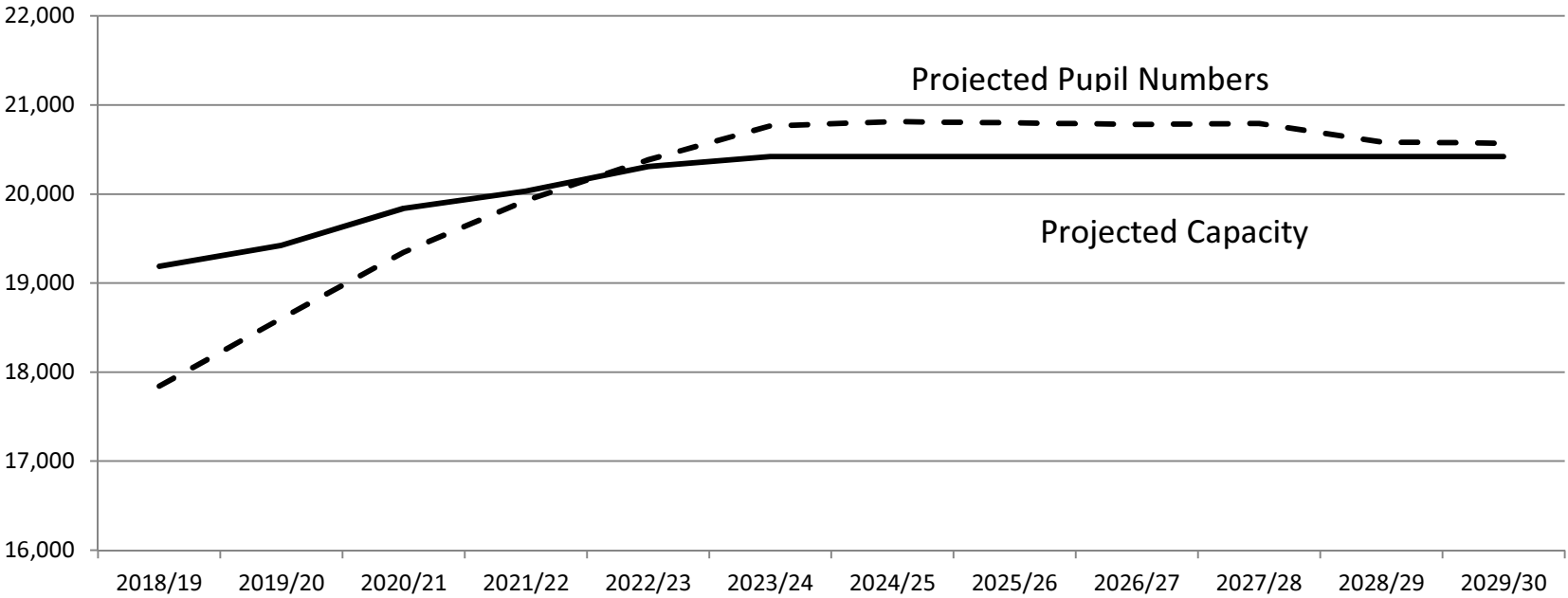
Demand for Y7 admissions into secondary schools will remain high and exceed available capacity without further expansions



Secondary Pupil Projections

Numbers on Roll

	2018/19	2019/20	2020/21	2021/22	2022/23	2023/24	2024/25	2025/26	2026/27	2027/28	2028/29	2029/30
Secondary Total Capacity	19,188	19,423	19,838	20,033	20,308	20,420	20,420	20,420	20,420	20,420	20,420	20,420
Secondary NOR Projections	17,842	18,603	19,345	19,927	20,382	20,764	20,813	20,800	20,783	20,791	20,584	20,571



Demand for secondary school places across all year groups will remain and will exceed available capacity without further expansions and/or new schools



Secondary School Proposals

Sept 2017

Expansion of Turton HS to create 150 permanent places

Temporary expansion of various schools to create 121 intake places

Cost: around £2.4M met from Basic Need funding support

Sept 2018

Expansion of Canon Slade CE Academy, ESSA, Ladybridge HS, Sharples Academy, St Joseph's RCHS, Thornleigh Salesian College and Westhoughton HS to create 1,195 permanent places

Cost: around £15.5M met from Basic Need funding support

Sept 2019

Proposed new 900 place King's Leadership Academy

Cost: to be met by ESFA subject to Council providing site

Sept 2020

Discussions on-going with the DfE in respect of possible further Academy Free Schools under Wave 13 (3 proposals presently being considered by the DfE) and the Council has also responded to an invitation by the DfE to access 'Presumption Free School Grant' assistance

Cost: yet to be determined



Other Pupil Place Issues

- Continuing pressure for Special School and Alternative Provision pupil places
- New Housing development will bring additional pressure for places
- Proposed revisions to Greater Manchester Spatial Development is likely to see new housing prioritised in urban areas with few possibilities to expand existing schools and limited opportunities to secure suitable sites for new schools
- Possible reduction in securing Section 106 Agreement commuted funding to provide capital for school places
- Unknown effects of Brexit and future population changes
- Increasing diversity across the school estate – reducing powers and influence of the Council to manage change; any new school have to be Free Schools
- Limited capital
- Wave 14 Free School Programme (Primary and Secondary) to invite applications from Spring 2019 – closes 30th Sept 2019



Questions?