



# **Environmental Services Scrutiny Committee 7<sup>th</sup> April 2015**

## **Be Safe Strategic Partnership – Bolton's Community Safety Partnership**

Sarah Schofield – AD Environmental Services  
Supt. Andrea Jones - GMP



# Presentation Outline

- Be Safe Strategic Partnership – Overview
- Performance Information
- Work Programme Updates
- Domestic Homicide Reviews
- Links with Greater Manchester
- Challenges / Opportunities



# **Be Safe**

# **Strategic Partnership -**

# **Overview**



# Community Safety Partnership Structure





# Be Safe Strategic Partnership - Overview

## Reducing Reoffending:

- Develop pathways out of reoffending (e.g. employment, housing), including Integrated Offender Management
- Develop the use of restorative justice and other preventative measures

## Improving Confidence Protecting Vulnerable People:

- Working with at risk groups to promote support available for hate crime
- Supporting high risk vulnerable victims of anti-social behaviour

## Tackling Alcohol & Drugs:

- Deliver robust enforcement against problematic licensees
- Develop pathways for criminal justice clients into the substance misuse service

## Domestic Abuse & Violence Strategy

- Ensure high risk victims of domestic abuse are identified and supported
- Improve early intervention and prevention measures



# Performance



Crime type	Crimes	Crime previous year	Volume change
Victim based crime	16,883	15,617	1,266
Violence against the person	4,052	2,858	1,194
Sexual offences	534	333	201
Robbery	221	246	-25
Theft offences	9,170	9,362	-192
Burglary	2,589	2,644	-55
Burglary in a dwelling	1,343	1,133	210
Burglary in a building other than a dwelling	1,246	1,511	-265
Vehicle offences	2,128	2,302	-174
Shoplifting	1,432	1,429	3
Theft from the person	217	271	-54
Bicycle theft	220	229	-9
All other theft offences	2,584	2,487	97
Criminal damage and arson offences	2,906	2,818	88
Hate crime	393	363	30
Domestic abuse	2,064	1,467	597
Alcohol influence	1,923	1,833	90
Drugs influence	544	415	129
Anti-social behaviour	12,838	14,719	-1,881

# Burglary

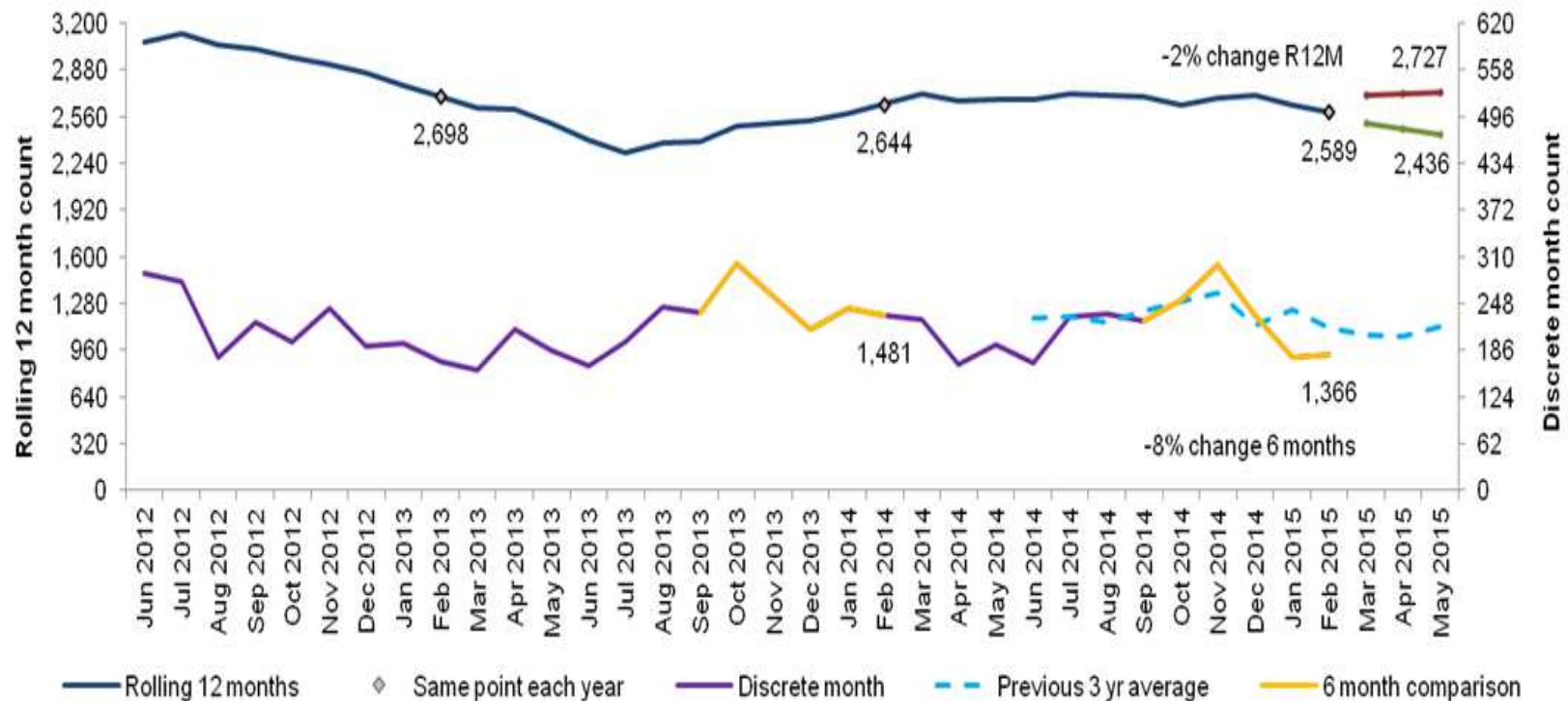
12 month comparison to the previous year for Bolton:

6 month comparison to the previous year for Bolton:

In 3 months' time, the position is likely to be lower than it is now

Decrease in recorded crimes but no significant change

Decrease in recorded crimes but no significant change





# Vehicle Crime

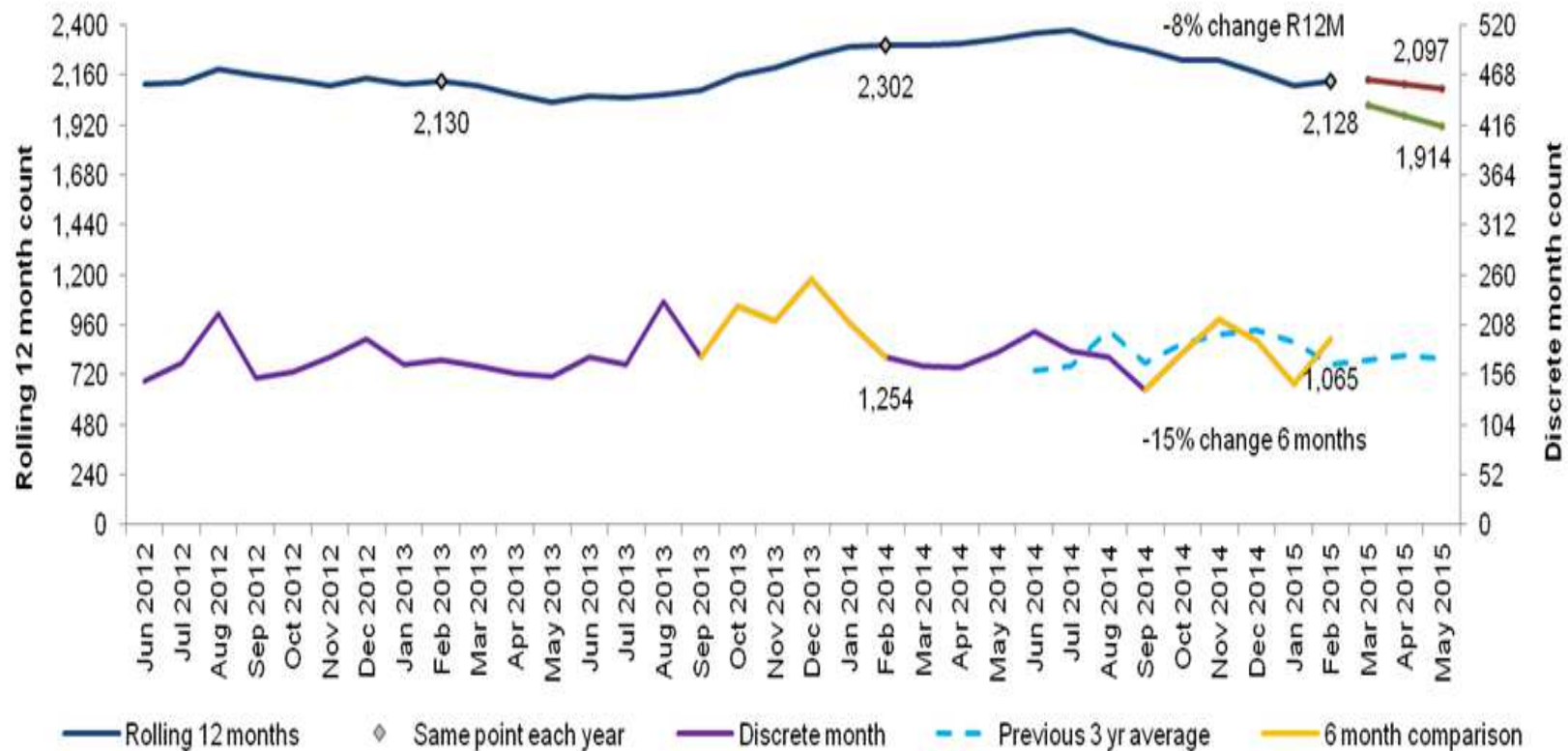
12 month comparison to the previous year for Bolton:

6 month comparison to the previous year for Bolton:

In 3 months' time, the position is very likely to be lower than it is now

Decrease in recorded crimes but no significant change

Decrease in recorded crimes but no significant change



# Criminal Damage

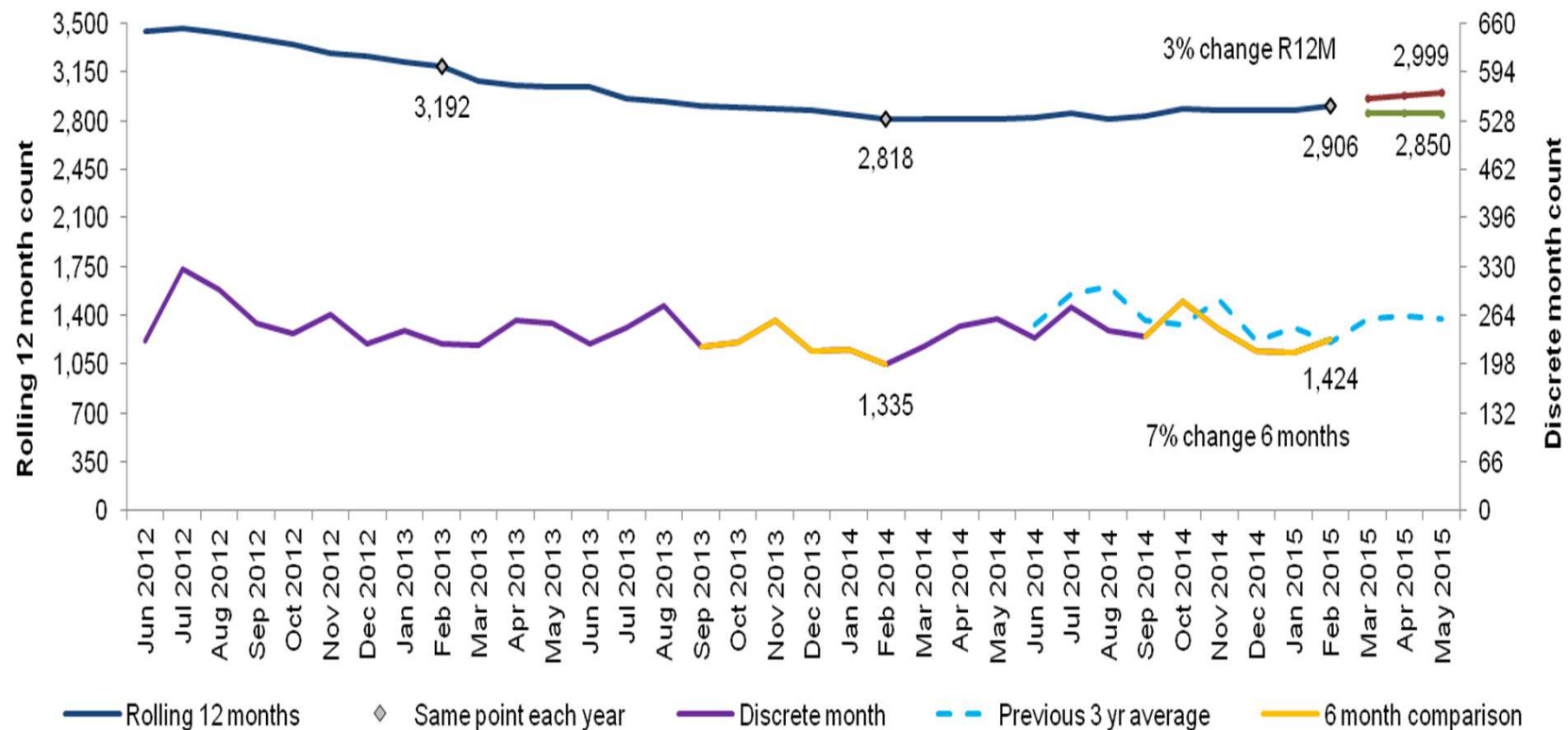
12 month comparison to the previous year for Bolton:

6 month comparison to the previous year for Bolton:

In 3 months' time, the position is likely to be higher than it is now

Increase in recorded crimes but no significant change

Increase in recorded crimes but no significant change



# Victim Based Crime

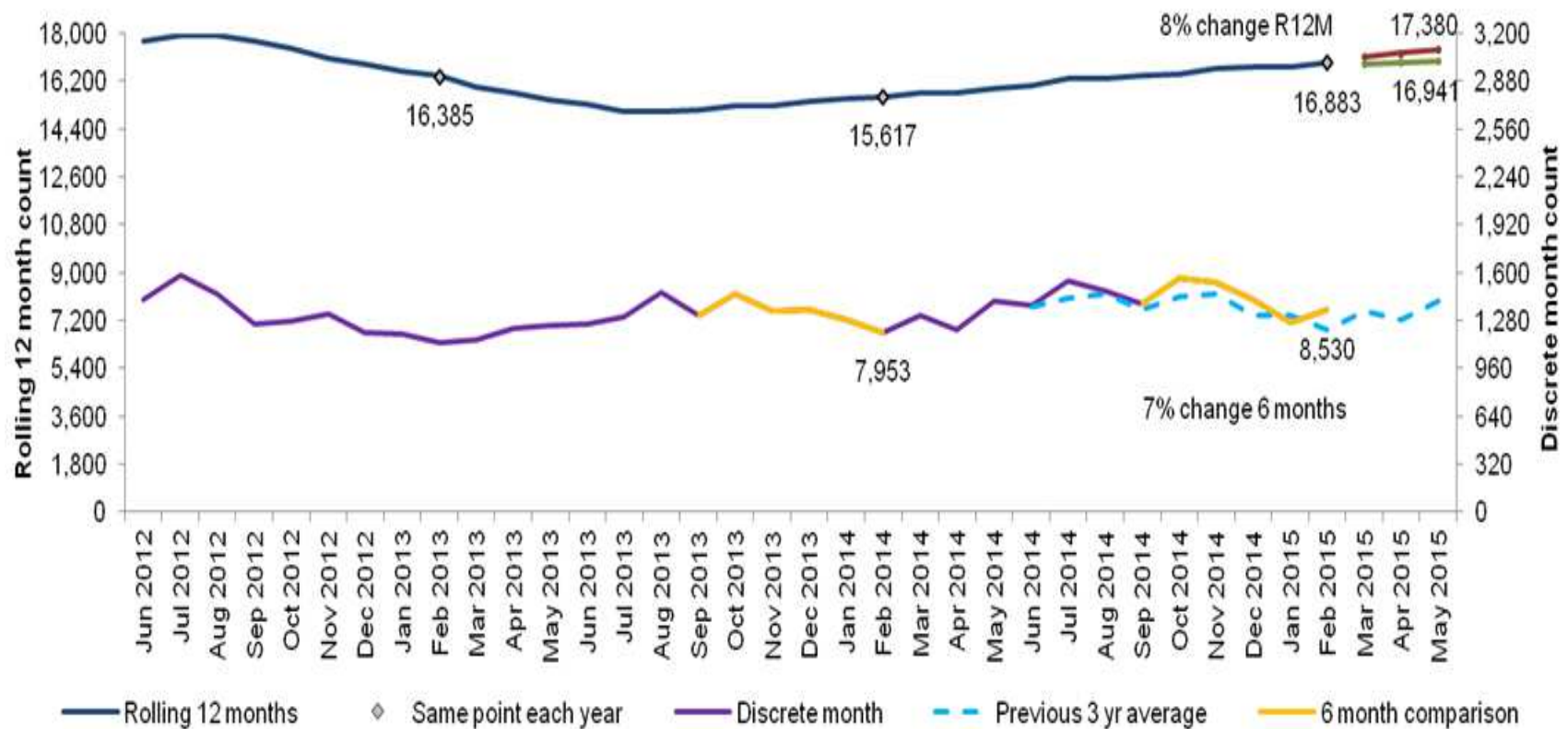
12 month comparison to the previous year for Bolton:

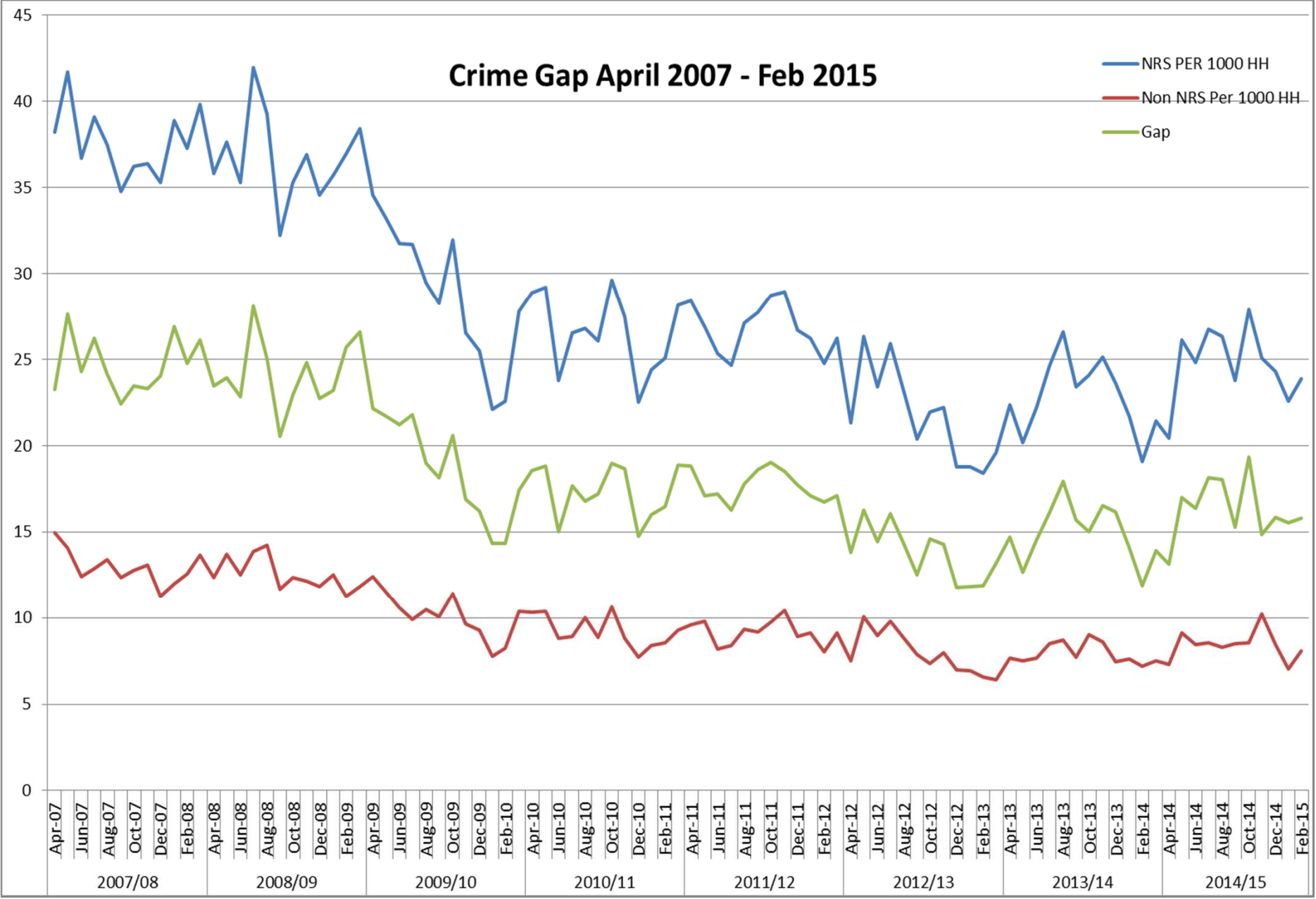
6 month comparison to the previous year for Bolton:

In 3 months' time, the position is very likely to be higher than it is now

Significant increase in recorded crimes

Significant increase in recorded crimes







# Anti-Social Behaviour

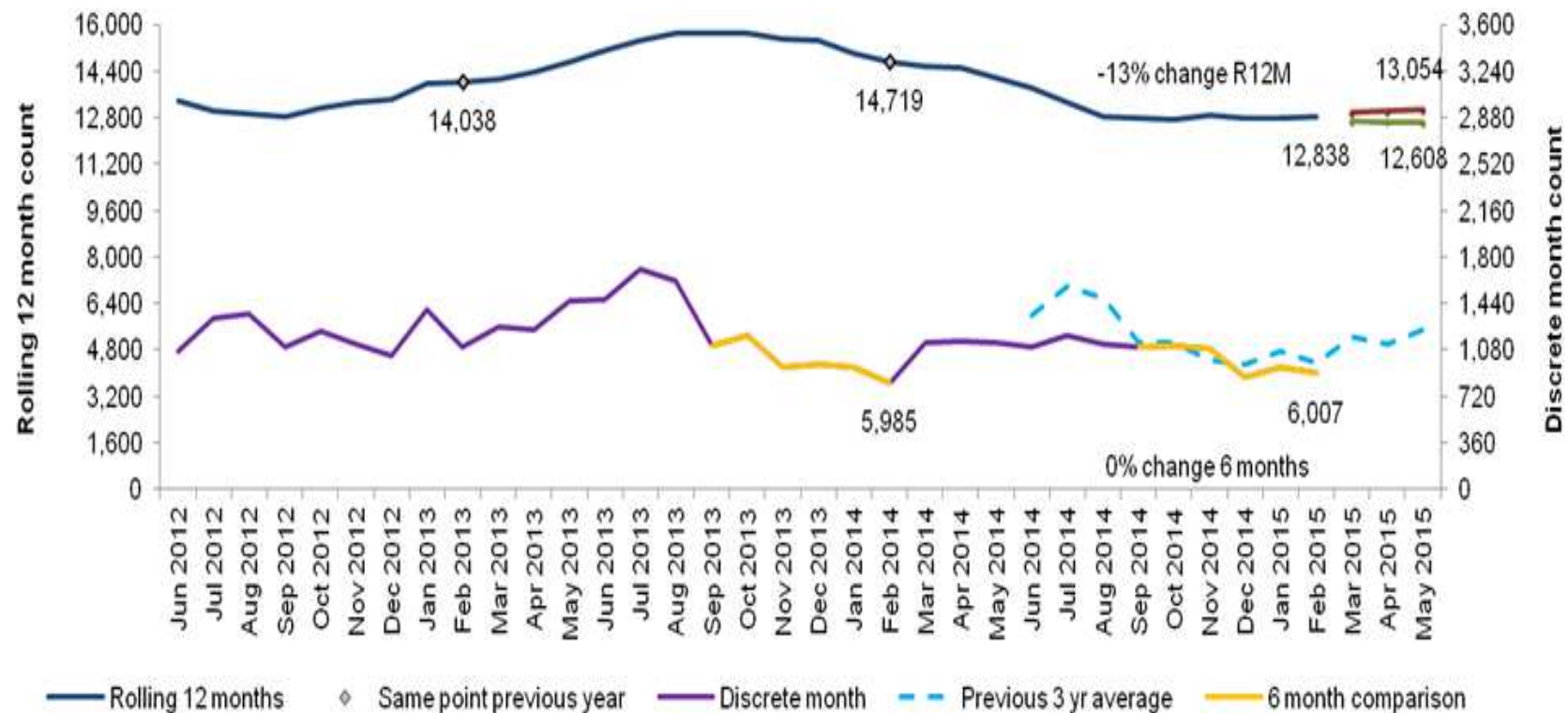
12 month comparison to the previous year for Bolton:

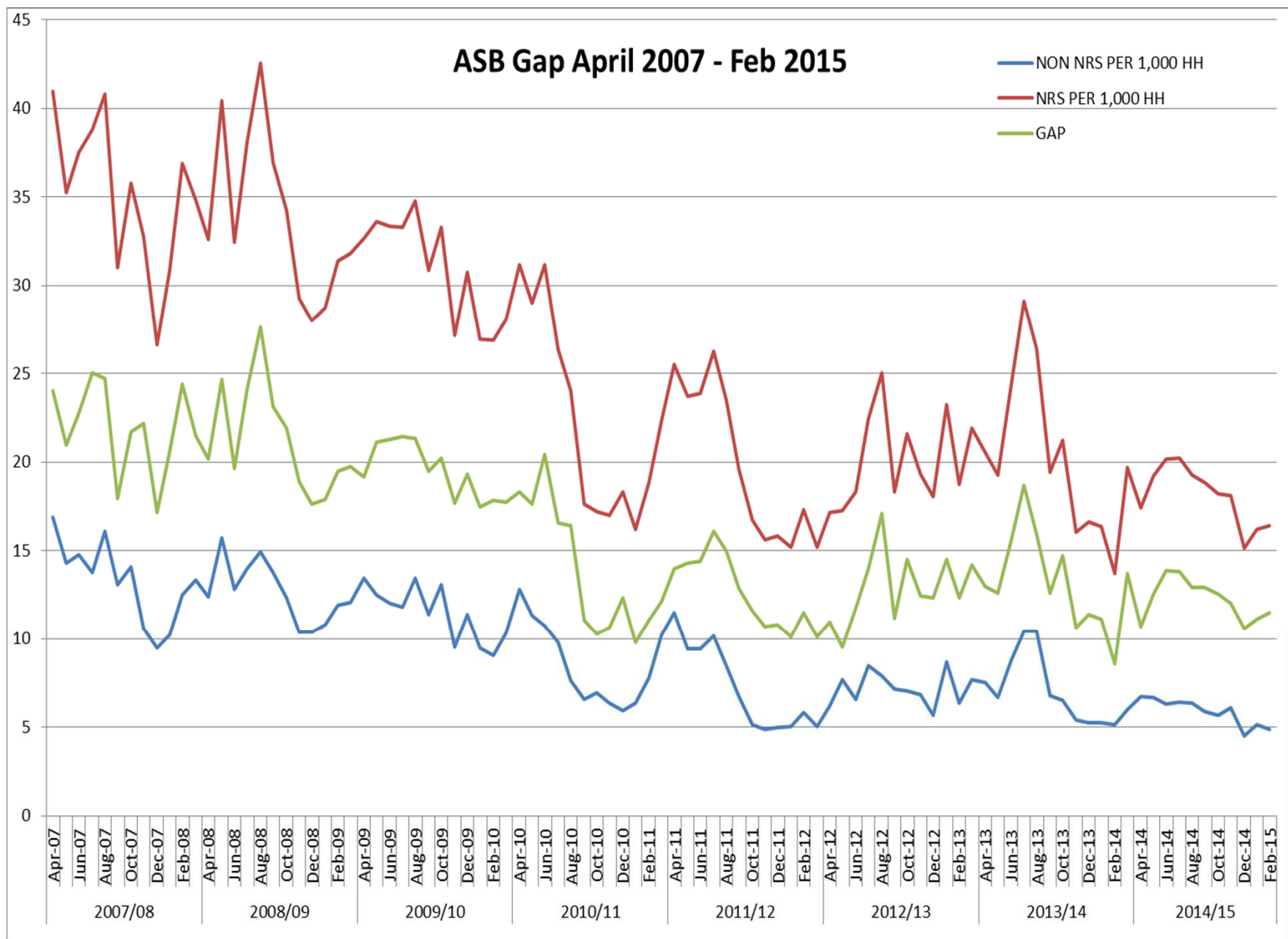
6 month comparison to the previous year for Bolton:

In 3 months' time, the position is likely to be lower than it is now

Significant decrease in recorded incidents

Increase in recorded incidents but  
no significant change







# **Work Programme Updates**



# Work Programme Updates

- Intensive Community Orders went live on the 2<sup>nd</sup> June
- Successful anti-social behaviour seasonal campaigns (Safe4summer and Treacle)
- Strong Delivery of the ASB Vulnerable Victims Project – providing advocacy for high risk victims.
- Policy in place for the changes to the anti-social behaviour tools and powers. Briefing sent to all elected members.





# **Anti-social Behaviour, Crime & Policing Act 2014**

- Reviewed informal and formal approaches
- Civil Injunction
- Criminal Behaviour Order
- Community Protection Notice
- Public Space Protection Order
- Closure Powers
- Statutory duty to carry out ASB Case Reviews once threshold has been met



# Work Programme Updates

- Joint work with the Children Safeguarding Board on developing a Domestic Abuse and Violence Resource Tool for front-line practitioners – includes a practitioner forum.
- Implementation of GP specific Domestic Violence Project – (IRIS)
- Completed domestic violence perpetrator pilot – learning will now be taken forward into Troubled Families Phase 2
- Various Domestic Violence campaigns



# Work Programme Updates

- Hate Crime Week – Nearly £10k allocated to 12 community & voluntary groups
- Hate Crime e-learning tool developed for staff and partners
- Various Hate Crime Campaigns



# Work Programme Updates

- Support Local Alcohol Strategy – Safer Night-time Economy Group working with the trade
- Developing a coordinated response to Serious & Organised Crime
  - Tactical group identifying opportunities to disrupt
  - Front-line staff training including organised crime and human trafficking



# **Community Safety Partnership Plan 2015 – 2017 (Refresh)**

- Needs Assessment
- Strategic Workshop
- Developing priorities and a new work programme
- Alignment with the GM Police & Crime Plan



# Domestic Homicide Reviews

- DHRs are a statutory function of the CSP with the purpose of:
  - Establishing what agencies can learn about working together to safeguard victims.
  - Setting actions and timescales to make improvements in working practices
  - Prevent future domestic violence homicides from occurring in the future through improved intra and inter agency working.
- Supporting the developing a GM-wide learning hub



# Domestic Homicide Reviews

- DHR 1: Positive assessment from Home Office. Publication Date to be confirmed.
- DHR 2: Draft Overview report complete along with action plan. Waiting for appeal process.
- DHR 3: Final stages of draft overview report. Currently at family engagement stage
- DHR 4: Early stages of the review with Independent Chair coordinating panel meetings.



# Police & Crime Commissioner

- Set the strategic direction of the police force via the Police & Crime Plan – 5 years based on local priorities but refreshed annually)
- Scrutinise the overall performance of the police
- Appoint the Chief Constable and hold to account
- Decide the police budget and set the precept
- Manage all funding, including the government grant and precept and other sources of income, related to policing and crime reduction – making grants as required
- Provide local link between the police and communities, working to translate the legitimate desires and aspirations of the public into action.





**GM Governance  
Arrangements**

**Police & Crime  
Panel  
(Leader)**



**Police & Crime  
Steering Group  
(Cabinet Member  
for Community  
Safety)**

**Officer Group**

**Police & Crime  
Leads Group  
(Nick Maher)**





# Challenges / Opportunities



# Challenges / Opportunities

- Impact of further public sector cuts on partnership working and community safety outcomes
- New relationship with the Community Rehabilitation Company (following split with Probation Service)
- Public Service Reform aimed at reducing demand and new financial models
- Serious & Organised Crime (including modern day slavery / human trafficking)



# Final Comments

- Strong partnership / reviewing priorities and new partnership plan 2015 - 2017
- Performing well despite cuts and significant change
- Engagement at all levels
- Fully involved in Greater Manchester arrangements



# QUESTIONS