

GMCA Governance

NOVEMBER 2022



WHAT POWER DOES THE GMCA HAVE?

Functions of the GMCA fall into the following broad headings:

- Transport
- Economic Development, Regeneration and Housing
- Policing
- Fire and Rescue
- Health
- Waste

All functions conferred on the GMCA by any enactment are functions of the GMCA, BUT an order or other enactment may provide that certain functions are exercisable only by the Mayor.

The default position is that functions are non-mayoral unless specified as mayoral in an order or other enactment.

WHAT ARE THE GM MAYOR'S POWERS?

- Chair and Member of the GMCA
- Functions of the Police & Crime Commissioner
- Functions of the Fire & Rescue Authority
- Responsibility for the devolved transport budget, smart ticketing and franchised bus services
- Power to create spatial plan for GM
- Control of £300m Housing Investment Fund

DECISION MAKING

- Mayor able to make some decisions independently
- Many require consultation with and approval of the GMCA for example:
 - Spatial Framework must be approved by councils and unanimous vote of council leaders
 - Preparation of local transport plan and policies (but needs approval of at least 7 other GMCA members)
 - Designation of mayoral development areas (but needs consent of GMCA member(s) for area concerned)
 - Approval of Compulsory Purchase Orders (but needs consent of GMCA member(s) for area concerned)
- GMCA retains statutory powers over work & skills, public service reform and low carbon

GOVERNANCE – KEY PRINCIPLES

Principles leaders have previously agreed are -

- Providing leadership and a strategic vision for the locality – experience and authority
- High quality decision making - evidence and knowledge,
- Transparency – be clear about who is making which decision, ensure that the public understand the governance process,
- Accountability – how are the decision makers held to account and scrutinised
- Efficient – maximising focus on key initiatives and delivery
- Assurance – robust governance and resource capacity, project management approach to delivery of key initiatives
- Equality and diversity – to ensure, as far as possible, all committees and bodies are diverse and gender balanced

EXISTING DELEGATIONS

GMCA can delegate CA functions or decisions:

- To a committee;
- To an officer of the CA, which includes all GM Chief Executives;
- To an officer in consultation with a member

GMCA cannot delegate any functions or decisions to an individual member

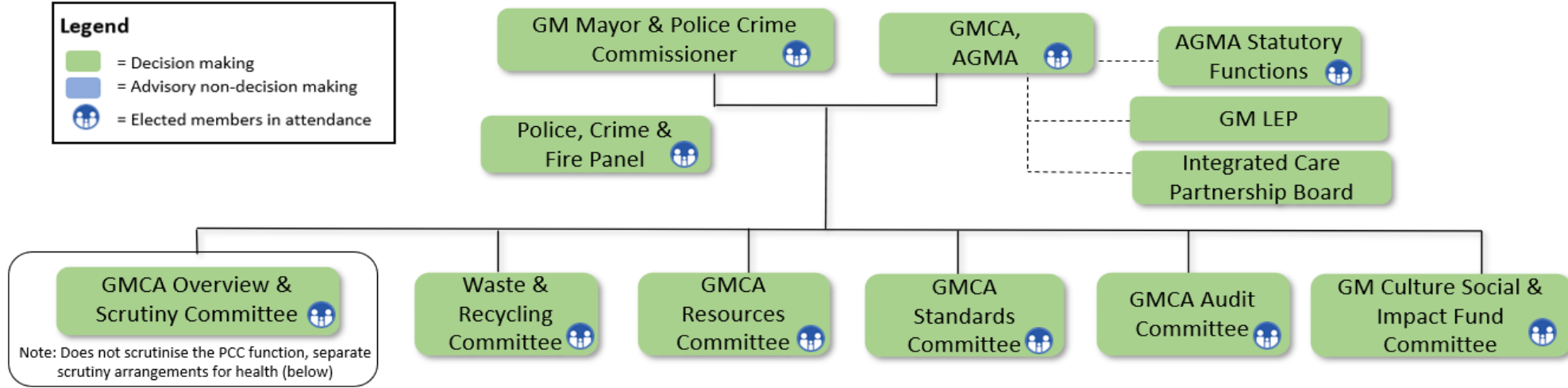
Mayor can delegate those functions that are delegable Mayoral functions:

- To the Deputy Mayor Policing and Crime (PCC and fire and rescue functions only);
- To any member of the CA;
- To any Mayoral Committee established by Order;
- To an officer of the CA

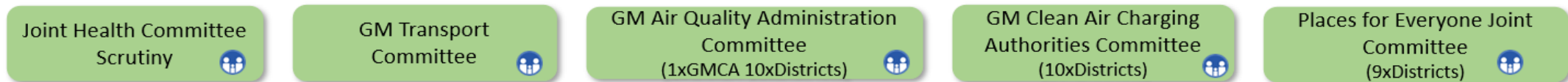
GMCA Governance

Legend

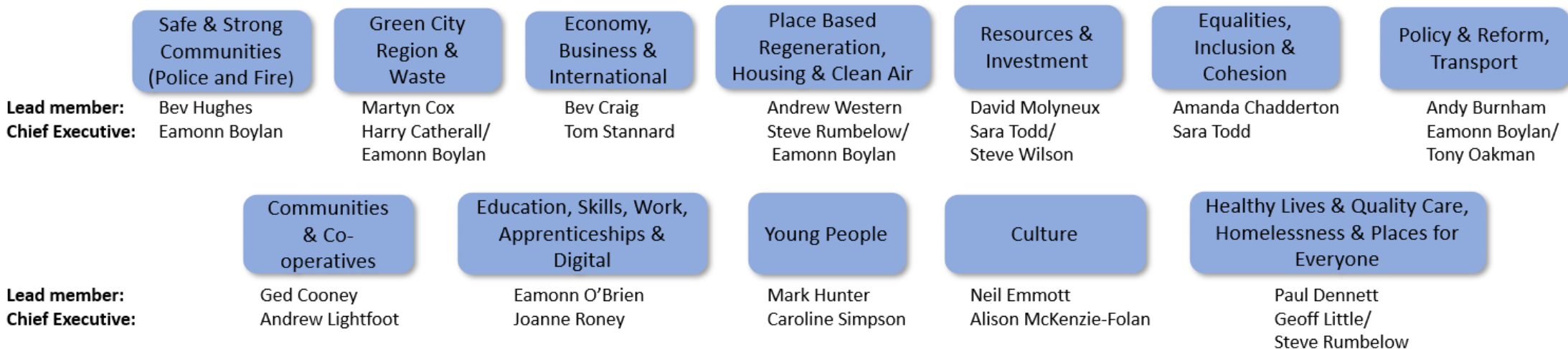
- = Decision making
- = Advisory non-decision making
- ⊙ = Elected members in attendance



Joint Committees



Portfolio Governance



NB: Portfolio governance structures feed into the statutory bodies above



**GREATER
MANCHESTER**
DOING THINGS DIFFERENTLY

 greatermanchester-ca.gov.uk

 [@greatermcr](https://twitter.com/greatermcr)

 [@greatermcr](https://www.facebook.com/greatermcr)