



# **LIBRARY AND MUSEUM SERVICES CAPITAL PROJECT: ETERNAL EGYPT**

**JULIE SPENCER**

**HEAD OF BOLTON LIBRARY AND MUSEUM  
SERVICE**





## Update

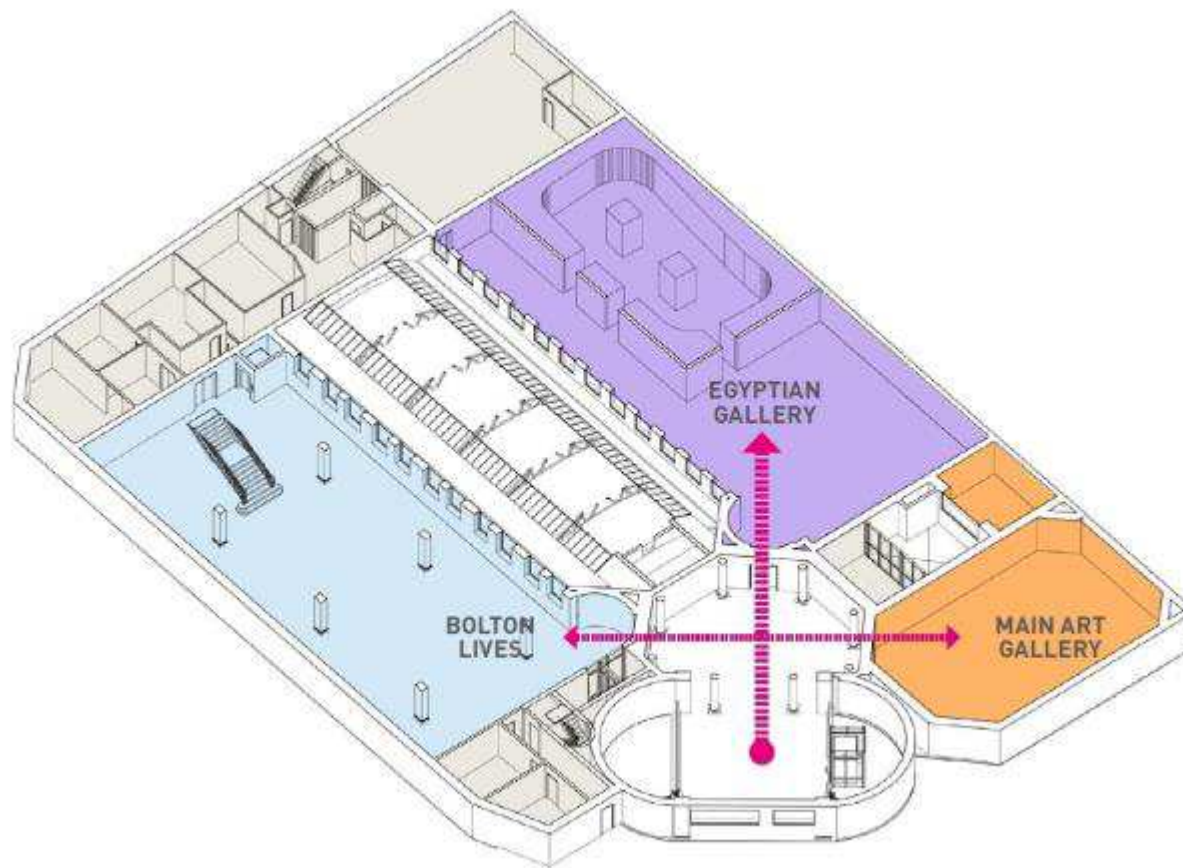
- Created a new scheme that has better outcomes and is better value for money
- 3.8M costs inclusive of private donation
- Addresses urgent maintenance issues
- Scheme no longer eligible for HLF funding
- Press – North West tonight, Bolton News and radio shows
- Ongoing relationship with customers about developments



## Timeline

- 1<sup>st</sup> December 2016      Museum closes
- 3<sup>rd</sup> December 2016      Animals and Us opens  
Watercolours exhibition opens
- Museum decant      2<sup>nd</sup> December 2016 –  
10<sup>th</sup> March 2017
- Construction period      10<sup>th</sup> March 2017 – 28<sup>th</sup>  
March 2018
- Exhibition spaces fit out      29<sup>th</sup> March 2018 – 24<sup>th</sup>  
July 2018

# Layout





## History Centre

- Plan to close service for 2/3 weeks to move collection (proposed mid November)
- Utilise the open space of new location
- Showcase collections on walls
- Aim to be inviting and welcoming and breaking down barrier to access.















# Animals and Us





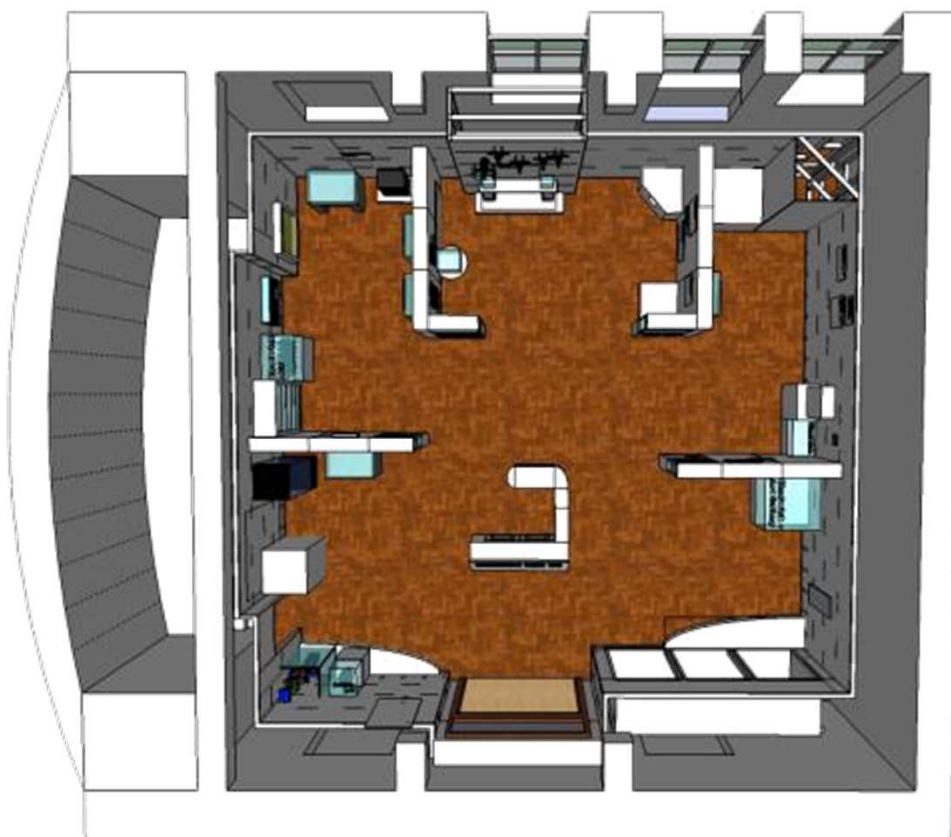
**The Lodge**  
*Pets, Sports and Zoos*

**The Farm Yard**  
*Survival and Work*

**The High Street**  
*Fashion and Inspiration*

**The Curator's Office**  
*Discovery and Study*

**The Grand Hall**  
*Worship, Symbolism and Stories*



**ENTRANCE**

