

Children's Services Scrutiny Committee

26th July 2022



National Context



Education Reform

- **Education White Paper**

- Government levelling up mission for schools to drive increase in performance by 2030
- 90% of children will leave primary school with expected standard in reading writing and maths (up from 65% in 2019)
- Increase GCSE avg grade in English Language and Maths to 5 (up from 4.5 in 2019)
- Published March 2022
- Proposals moving towards legislation in new Schools Bill

- **SEND and Alternative Provision Green Paper**

- Published March 2022
- To address a system under pressure – nationally poor outcomes, low parental and provider confidence, financial unsustainability
- Synergies with Education White Paper
- Published March 2022
- Proposals in consultation
- Expected to move legislation quickly

Schools White Paper Proposals

[Opportunity for All: Strong Schools with Great Teachers for Your Child](#)

- Improved recruitment, training and development for teachers and the EY workforce
- Improved national resources to develop curricula
- Longer school week with a min of 32.5hrs
- Better behaviour and attendance with a duty for schools to publish attendance policy
- Legislation to establish a register for children not in school
- Each school to have a parent pledge to show support and tutoring to ensure children are not left behind
- A fully academy trust led system with a single regulatory approach – all schools will academise by 2030
- Ability for Local Authorities to set up MATs where “too few strong trusts exist”
- A collaborative standard to ensure trusts work constructively with all partners
- Local Authorities to continue to champion the interests of children
- Local Authorities to retain overall sufficiency duty and will determine number of school places as well as managing admissions for all schools with new legal duties to support this
- Education Investment Areas to increase funding and support to areas in most need, plus extra funding in priority areas facing the most entrenched challenges.

SEND and AP Green Paper Proposals

[SEND Review: Right Support, Right Place, Right Time](#)

- A single SEND and AP system with national standards, processes and code of practice. All Education Health and Care Plans to be digitised.
- New mandated partnership arrangements in local areas across education, health and care
- Each area to have a local inclusion plan which will support parents to make a decision on which placement is best to meet the child's needs
- Increase in investment in schools budgets and improving mainstream provision
- AP to be an integral part of SEND systems, with AP to focus on early intervention
- Statutory guidance to integrated care boards to set out how responsibilities for SEND should be discharged
- New national frameworks for banding and tariffs for SEND and AP placements
- Ofsted and CQC to update the Area SEND inspection framework
- Support to LAs with biggest High Needs deficits via the Safety Valve Programme

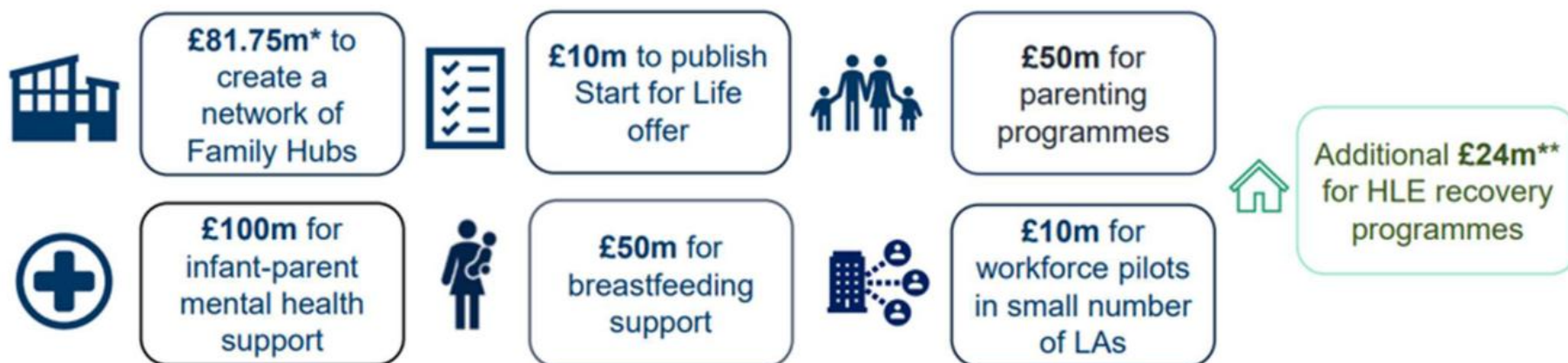
Safety Valve Programme

- SEND funding is via the High Needs block of the Dedicated Schools Grant (DSG)
- Many LAs have cumulative deficits due to rising demand
- Bolton High Needs cumulative deficit is £19m
- Bolton is in the 3rd wave of the Safety Valve programme
- DfE will provide financial assistance subject to Bolton working towards an in year balanced budget
- We will be required to submit a plan to the DfE in October which details how we will achieve this
- The plan will be signed off by the Secretary of State and be published in the public domain
- If there is any doubt that the proposals set out in the agreement are not being delivered, DfE may withholding payment or reduce future instalments that have been agreed.

Family Hubs - Funding

At the Autumn Budget, the Government committed £301.75m for 75 upper-tier local authorities to deliver start for life and family help services over the next three financial years.

The package contains funding for the following components:



* This funding is in addition to previous £39.5m family hubs funding which includes the £12m transformation fund

** This forms part of the £153 million of new funding announced June 2021 to aid early years educational recovery

Family Hubs - Principles

Access

Family Hubs are a clear, simple point of access for help and support.

Connection

The purpose of a hub is connection - Services, professionals & sectors working together

Relationships

A family hub means a family focus; relationships are the key - building on family strengths



Link to Supporting Families

- Family Hubs are a way of delivering the Supporting Families vision of an **effective early help system**.
- They provide a **single access point** to a **range of services** for families – a ‘front door’ to **universal** and **early help** services - and involve **co-location** of services and professionals.
- Where needed, hubs will ensure seamless **access to a whole-family lead practitioner**.

our

Single digital offer, co-designed with families, providing trusted advice and accessible information inc. accurate information on the family hub services



our

Vision of the Bolton Family Hub Model



our

Single 'text messaging service', with access to professionals to provide trusted advice and information to parents/carers and young people

our

A single access point 'Family Hub' in each neighbourhood providing seamless access to integrated family services



Core co-located Service offer in each Hub:

- ✓ Community Midwifery
- ✓ Birth Registrations
- ✓ Public Health Nursing 0-19/25
- ✓ Infant Feeding & Healthy Families
- ✓ Perinatal & Parent-Infant Mental Health
- ✓ Family Information & Childcare Brokerage
- ✓ Early Years Specialist Family Support
- ✓ VCSE Peer-Support
- ✓ 0-19 Targeted Early Help Support
- ✓ Children's Mental Health (inc. i-Thrive)

With access to wider family services:

- ✓ Voluntary & community sector offer
- ✓ Adult Mental Health (inc. IAPT)
- ✓ Holistic Adolescent Health Offer
- ✓ Adult Substance Misuse Services
- ✓ Careers & Employment Services
- ✓ Play and Youth Services
- ✓ Domestic Violence Services
- ✓ Welfare and Debt advice
- ✓ Housing advice
- ✓ Carers Support



Universal whole family assessment

Strength-based practice

Evidence-based interventions

....co-ordinated through integrated pathways and our Early Help System....

Recognising the vital importance of



co-design and co-delivery with families

BUT



This will only be achieved by understanding & overcoming the barriers.

Culture/Organisational rules

Systems and processes

IT/Estates

.....unlocking these barriers



Bolton Council

NHS in Bolton

Bolton Together



will help align our goals and enable us to deliver a seamless model of family support

Bolton 2030
Active, Connected & Prosperous

National Context Summary

- Systems across Education, SEND and Social Care need significant reform on a national level
- Biggest changes to the Education system in the last 20yrs
- Response to National Social Care reviews are likely to require significant change across the Council and partners
- These reforms may need PDGs to develop Bolton position
- Implementing Family Hubs will be a programme of change over the next 5yrs
- As yet, little clarity of...
 - Policy detail
 - Timescales for legislation changes
 - Funding to make changes

Local Context and Challenges





Local Challenges and Pressures

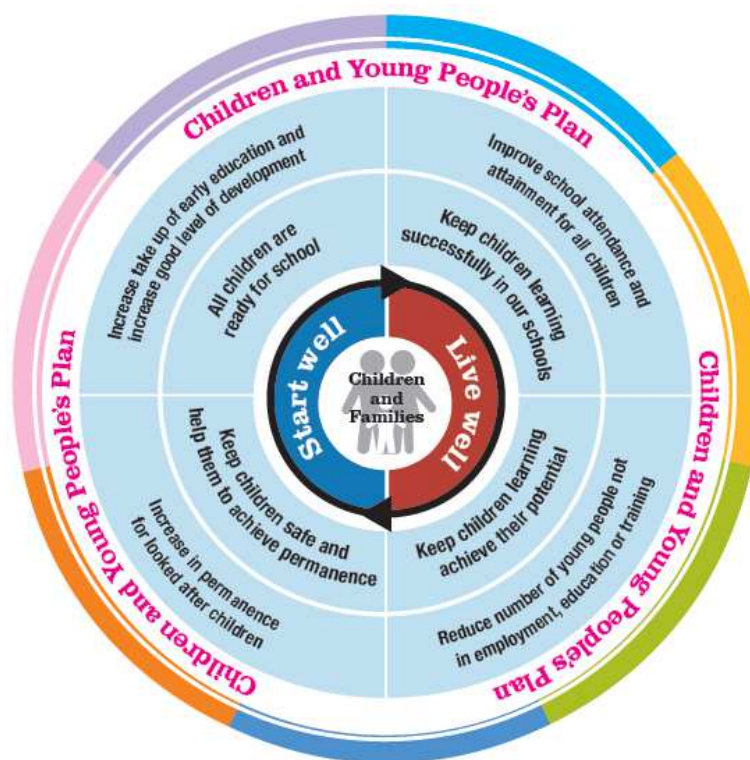
- Demand management
- Cuts
- Placement sufficiency – LAC, SEND and AP
- High Needs – balancing the budget
- Secondary school places
- Rising cost of living
- Transport – rising fuel costs
- Recruitment, retention and succession planning

Children's Directorate Plan



Start Well, Live Well

Our Vision: The best start in life for all



- “ All children are ready for school ”
- “ Keep children safe and help them to achieve permanence ”
- “ Keep children learning successfully in our schools ”
- “ All children will achieve their potential ”
- “ Our Strategic Commissioning function delivers an effective joint Commissioning Strategy that enables positive outcomes ”
- “ Our workforce access development to enable efficient and effective delivery ”

Themes	Early years	Quality assurance and continuous improvement to support efficient and effective delivery
	Early help	
	Demand management	
	Belonging in Bolton	
	Preparing for adulthood (SEND)	

Children's Directorate Plan

Priorities

1. All children ready for school
2. Keep children learning successfully in our schools
3. Keep children safe and help them achieve permanence
4. All children achieve their potential
5. 'One Team' workforce
6. Market Shaping and Sustainability
7. Operating effectively and efficiently to enable current and future delivery

Deliverables

1. **Create a network of family hubs incorporating Early Help and SEND services**
2. **Develop a start for life offer across all agencies working with children and families**
3. Maintain and improve quality of education provision in Bolton
4. Further develop belonging in Bolton inclusive education strategy and align to developing national legalisation
5. **Reform SEND and deliver a balanced High Needs budget**
6. Further develop approach to Early Help demand management with the voluntary sector
7. Deliver the expectations of the care review
8. Develop a Directorate workforce strategy to ensure appropriate capacity. Including recruitment, retention, succession planning and development of staff.
9. Develop and implement a transition strategy to ensure support for children and young people is seamless throughout their journey.
10. Supporting a skilled workforce which feels valued, is person centred and works together across services and organisations.
11. Supporting service users, families and carers through person centred services that deliver their desired outcomes.