

BASH
to
Bolton Learning Alliance
(BLA)

Supporting School Improvement
2016-17

*Traditionally good positive working relationships;
cluster working and some cross cluster working*

Challenges

- Academies and marketing
- Pupil numbers
- Budgets
- Personnel changes
- Decline in Local Authority Services

BASH Summer Conference 2013

We cannot accomplish
all that we need to do
without working
together

A commitment to the

19,000

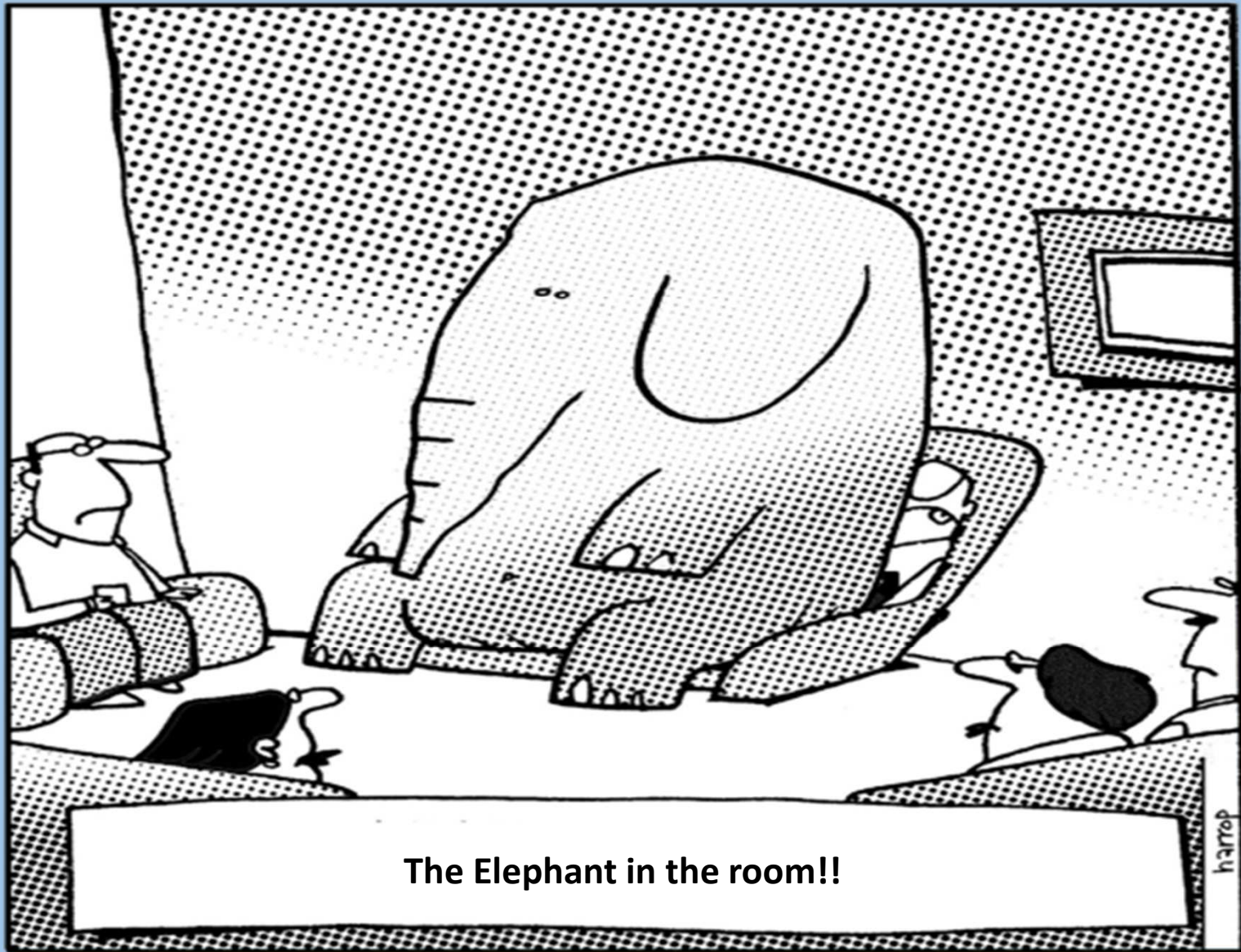
***secondary aged school
students in Bolton***



September 2013 - Sharing, Shaping and Developing/Strengthening Relationships

- School Direct Alliances
- BASH Meetings in schools / Tours & Presentations of BASH schools
- Shared response to early entry
- Shared response to Industrial Action
- Group Attendances at National Conferences
- School Improvement Review Group
- BASH Action Groups - Breakfast meetings

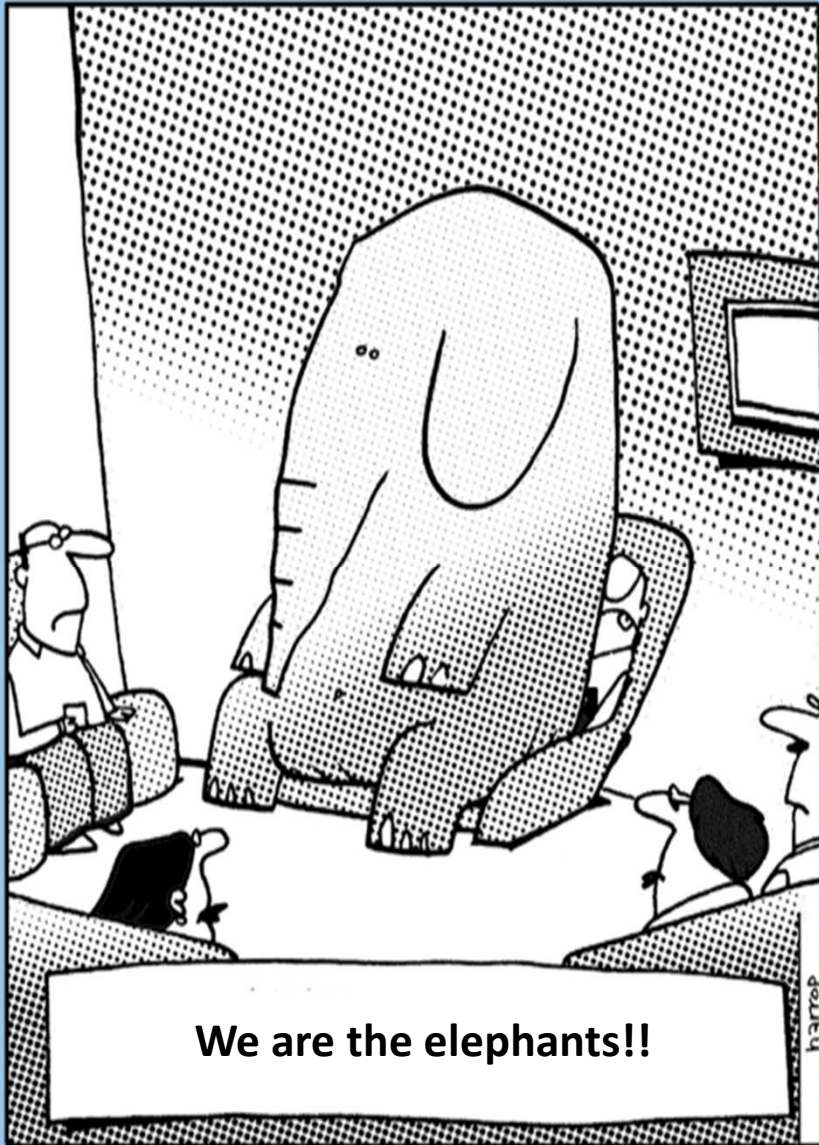
Appraisal & Pay Policy; Curriculum & Accountability; Pupil Premium and Provision Mapping; SEND Code of Practice; Keeping on Track – In Year Fair Access; Managing staffing restructure



BASH Summer Conference 2014

We want more!!

- School to School Support
- Quality Assurance and Review
- Joint Services Acquisition and Delivery
- Joint Professional Development
- Initial Teacher Training
- Research and Development
- In Year Admissions





September 2014



BASH becomes Bolton Learning Alliance (BLA)

This change of name better reflects the importance and value of our developing relationship with each other and with strategic partners such as Bolton Local Authority, Teaching Schools and the wide range of education and service providers within and beyond Bolton.

The Bolton Secondary Learning Partnership (BLA and LA)

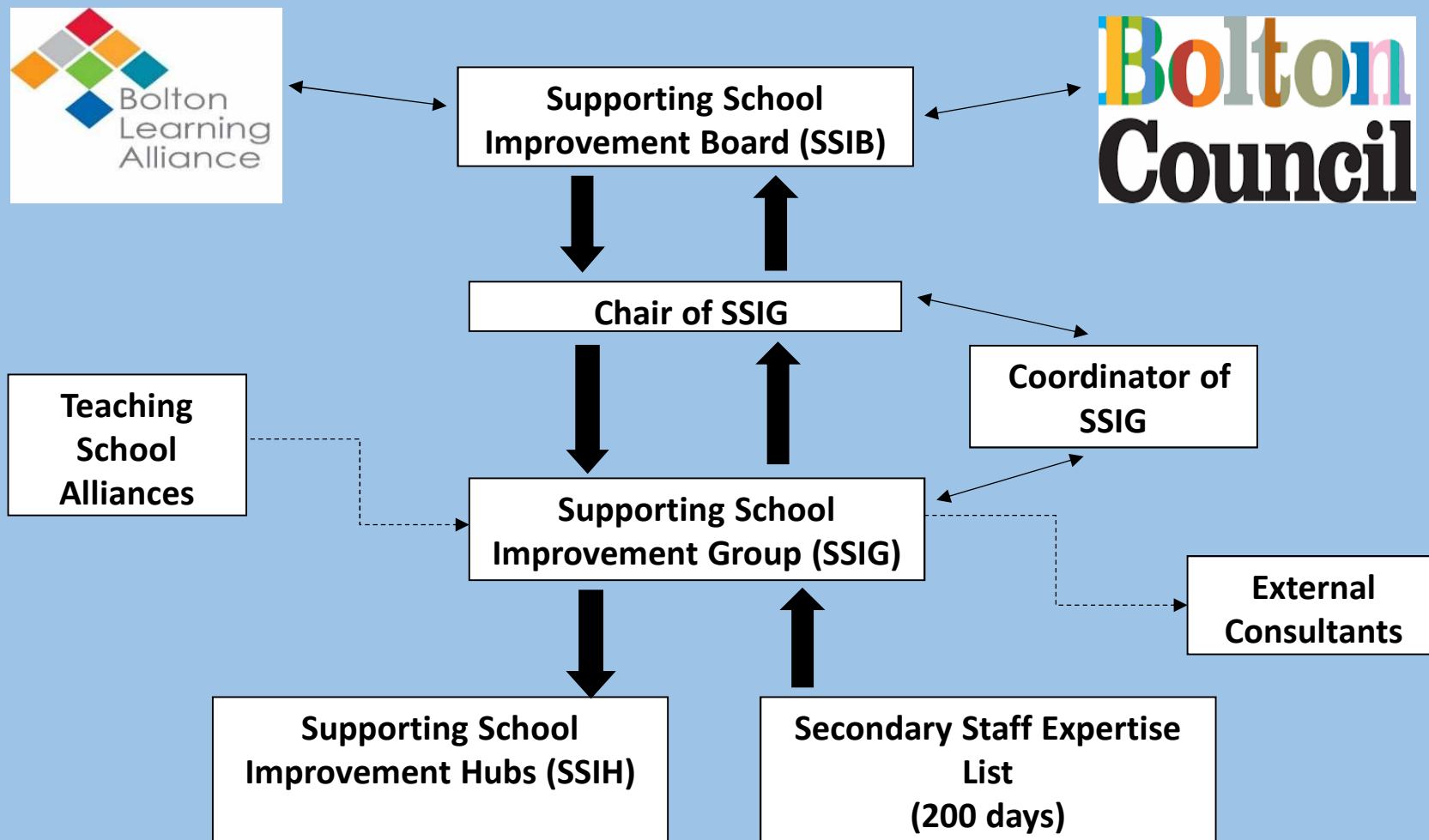
With the aim of raising standards for **all students in all secondary schools**, it is proposed to establish a **Bolton Secondary Learning Partnership** for Bolton's secondary schools which will support school improvement work in Bolton.

Why we do it!

- Fostering a sense of common moral purpose among all our school and local authority leaders for securing and maintaining standards across the Authority as well as for standards in our own schools
- Promoting the personal growth and development of all our young people (19,000 learners) in our secondary schools to empower them to become highly effective and happy consumers, producers and citizens
- Developing our capacity as self-improving schools
- Through a spirit of common endeavor, reaching a position where all Bolton's secondary schools are judged to be good or better and where a significant number are judged as outstanding

How we do it!

The Bolton Learning Partnership



Supporting School Improvement Board (SSIB) - to hold the Chair to account for the strategic direction and impact of SSIG and the deployment of resources.

Phil Hart – Representing Bolton Learning Alliance (BLA)

Tony Birch – Representing Bolton Council

Sally McFarlane (Chair) – Representing Teaching Schools

Supporting School Improvement Group (SSIG)

- develop, review and quality assure the business of school to school support and to support the development of SSIG to meet the current and future self-improving, self- sustaining needs of all students and all schools.

Tony Purcell (Chair)

Lee Harris – Head teacher

Alison Burrowes - Head teacher

Richard Woods – Head teacher

Gary Johnson – Head teacher (Special)

Rachel Quesnel – Head teacher

Tanya Lewyckyj – Head teacher (Teaching School Alliances)

Bob Atkinson – Local Authority

Anna White – Local Authority

Geraldine Whitehead - Coordinator

Supporting School Improvement Hubs (SSIH) – to develop and share best leadership and pedagogical practice to support the raising of attainment and progress of all students, at all levels and from all backgrounds

Teaching and Learning - Sharples

English - Westhoughton

Maths – Thornleigh Salesian

Science - Sharples

Geography – St James's

MFL – Thornleigh Salesian

Design and Technology – Canon Slade

Transition - Sharples

Standards – St Joseph's

History – Turton/St Joseph's

Drama – Westhoughton

What we do!

The Development Plan will have three overarching focus areas:

Leadership – to develop and create leaders; to deepen the skills & knowledge of leaders; to share best leadership practice within and across schools; to create leadership capacity in schools and for school improvement.

Teaching and Learning – to develop pedagogy in schools; to share best teaching & learning practice within and across schools; to support the raising of attainment and progress of all students at all levels and from all backgrounds.

Intervention – to develop school to school support to meet the immediate needs of individual schools; to share best intervention practice within and across schools; to support schools to meet short term targets for their students and their school.

The Development Plan will be developed coherently alongside the plans of the **‘Teaching School Alliances’** to avoid competition, duplication and to deploy skills and resources effectively to meet the needs of all students and the schools.

Leadership – to develop and create leaders; to deepen the skills & knowledge of leaders; to share best leadership practice within and across schools; to create leadership capacity in schools and for school improvement.

- *Develop a Bolton wide school to school 'Review Programme' tailored to differing school needs*
- *Develop a coherent strategy to support teacher recruitment for all subjects and all levels: ITT; shortage subjects; deputies and head teachers.*
- *Develop a coherent strategy to support the professional development of staff at all levels: teachers; non-teachers; leaders.*
- *Develop an NQT Induction Programme for 2017 cohort*
- *Develop a Head Teacher Induction Programme for 2017*
- *Develop an SSIG Business Model for September 2017*
- *Improve communication to stakeholders*

Teaching and Learning – to develop pedagogy in schools; to share best teaching & learning practice within and across schools; to support the raising of attainment and progress of all students at all levels and from all backgrounds.

- *Develop strategies to support the raising of attainment and progress in Maths*
- *Develop strategies to support the raising of attainment and progress in English*
- *Develop the Hubs to support staff development and student achievement across subjects and schools*
- *Support the development of SEND across the schools.*

Intervention – to develop school to school support to meet the immediate needs of individual schools; to share best intervention practice within and across schools; to support schools to meet short term targets for their students and their school.

- *Develop bespoke school to school support opportunities and processes*

Bolton Wide

Progress 8 Measure

Basics Measure

(English & Maths)

Resources

- £3000 per school
- Local Authority support funding
- 3 days of commitment from Board members
- 3 days of commitment from Group members
- 9 days of committed staff time per year per school
- Specialist Leaders of Education (SLEs)
- Commitment of support from Ladywood & St James's Teaching School Alliances

Bolton Working Together

- 104 Requests for S2S Support (20/22 schools have had support)
- 82 Hub Meetings
- 7 Briefing Papers
- Bolton Learning Alliance Working Protocols (see paper)
- Local Authority Data Pack
- GCSE Subject Level Results
- GCSE Awarding Body - School Profiles
- Quality Assured Staff Expertise List
- In Year Fair Access (IYFA) Protocols Reviewed

Changing Landscape

New schools

Academy programme

The Future of SSI

What do schools want?

What do they not get elsewhere?

What can we do better together?

Where can we make a difference?

Summer 2013 & December 2015
& November 2016

We cannot accomplish
all that we need to do
without working
together

