

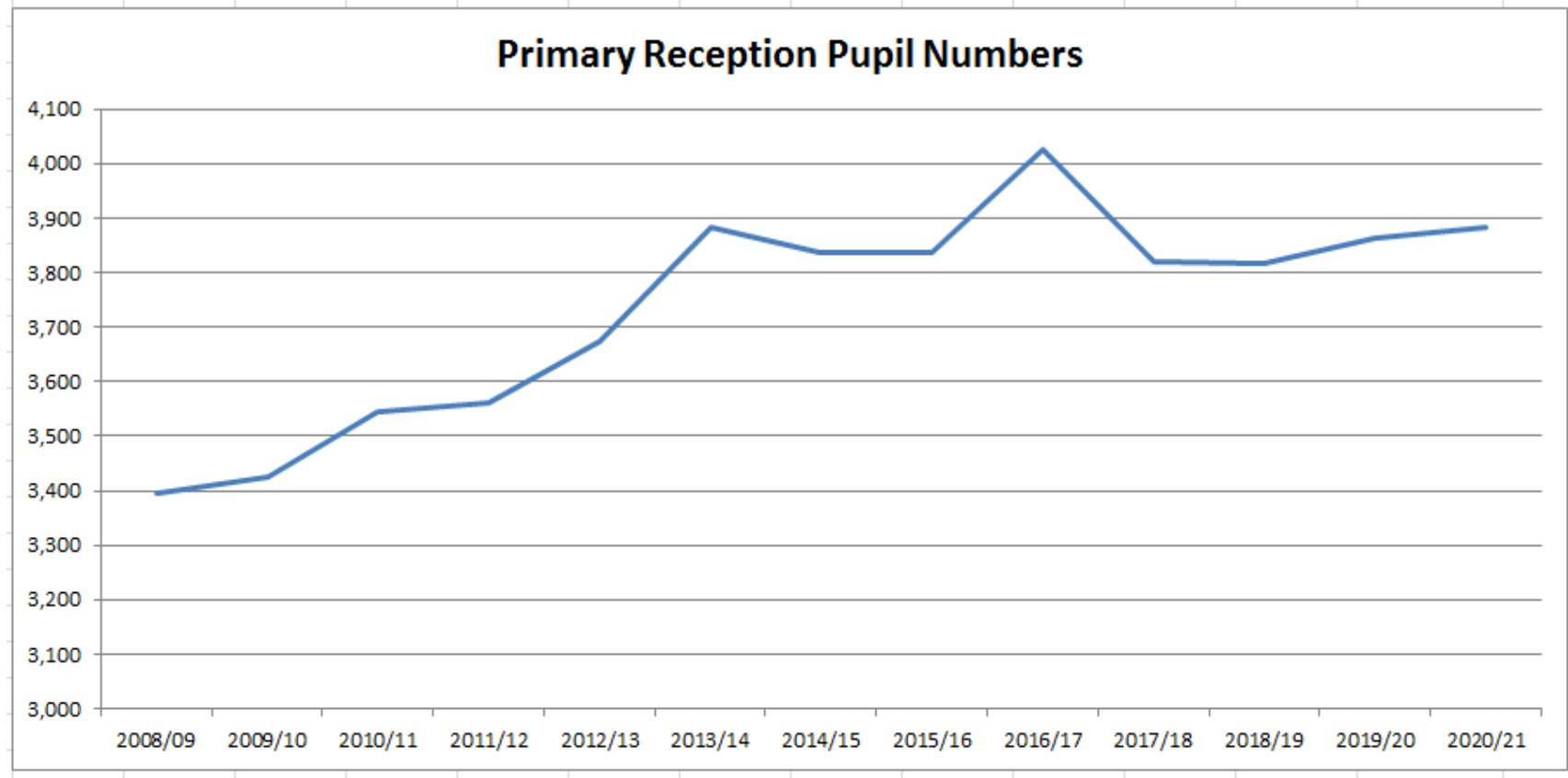
Pupil Growth and Pressures in Bolton 2008 - 2025

Presentation to Scrutiny Committee
Wednesday 23rd November 2016

Dr Tony Birch – Assistant Director, Children's and Adult Services
Ged Kelly – Capital Programme Manager, Children's and Adult Services

Growth in Primary School Pupil Numbers 2008 - 2020

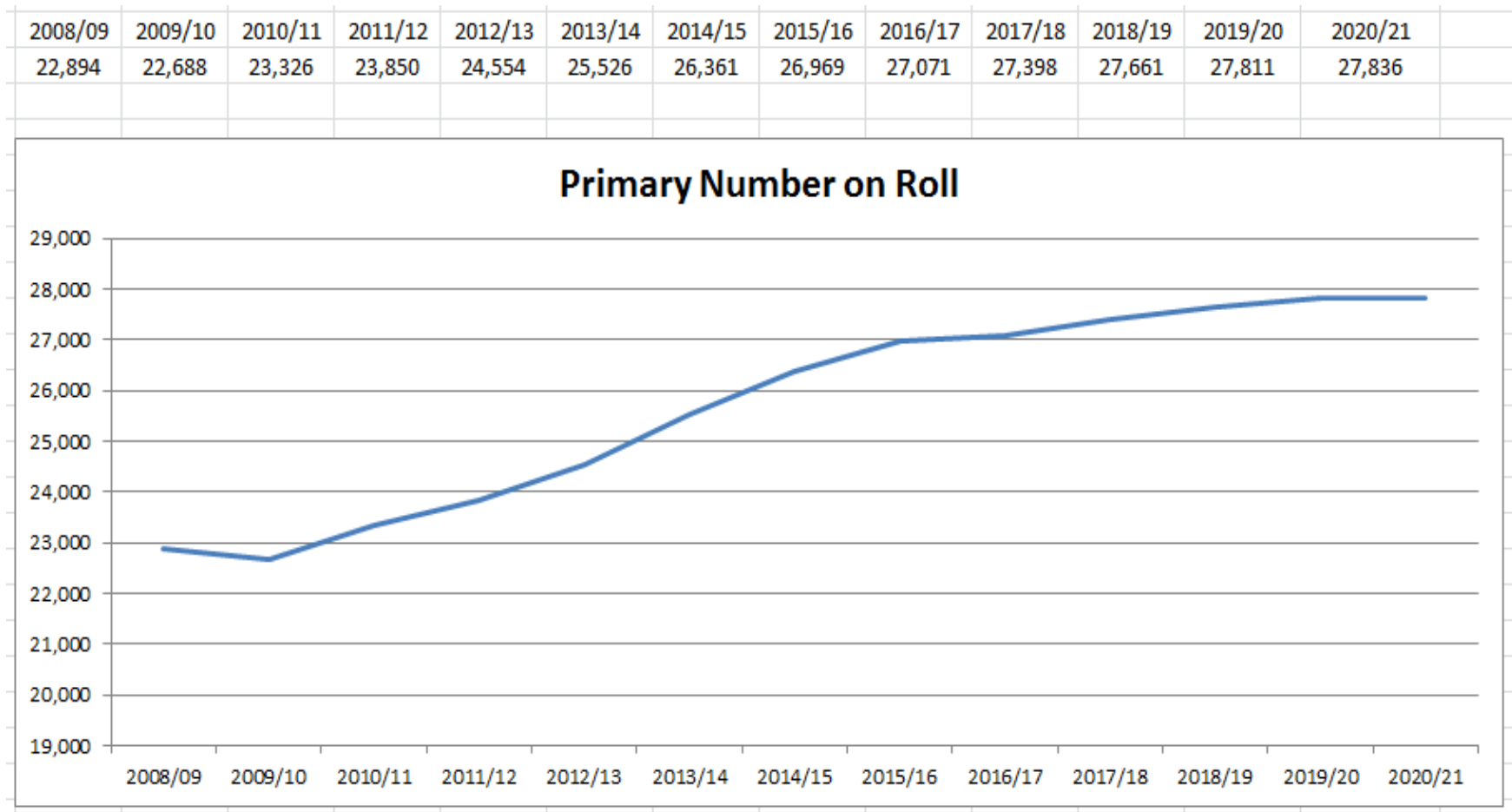
Intakes								Projected					
2008/09	2009/10	2010/11	2011/12	2012/13	2013/14	2014/15	2015/16	2016/17	2017/18	2018/19	2019/20	2020/21	
3,394	3,425	3,543	3,560	3,674	3,882	3,835	3,838	4,027	3,819	3,816	3,864	3,883	



Growth in Primary School Pupil Numbers 2008 - 2020

- Over 4,000 Reception pupils admitted Sept 2016
- 750 more than admitted in Sept 2008
- Over 200 permanent and temporary Reception places created for additional pupils in Sept 2016
- 86% of 1st Preference offers made
- 96% of all Preference offers made

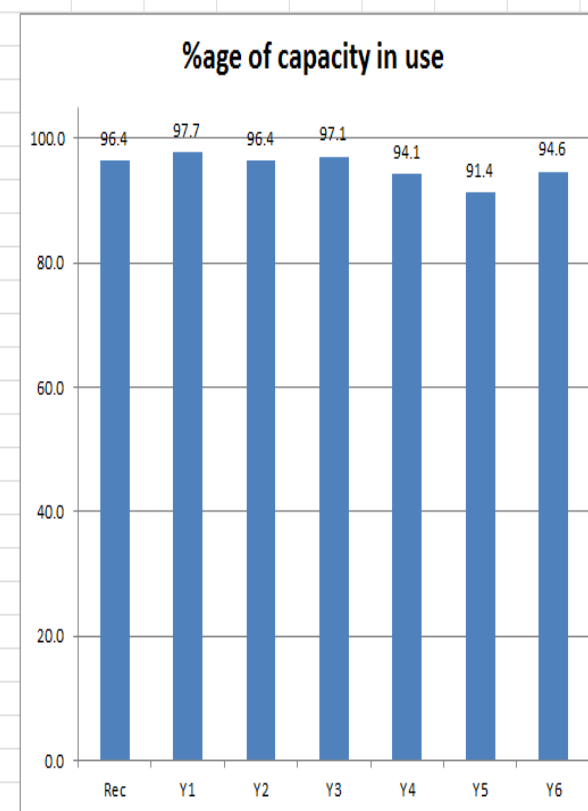
Growth in Primary School Pupil Numbers 2008 - 2020



Primary School Operating Capacities West (Westhoughton, Horwich and Blackrod)

	PAN	REC	PAN	1	PAN	2	PAN	3	PAN	4	PAN	5	PAN	6
Area 1 West														
Blackrod														
Blackrod Church CEP	30	30	30	30	30	30	30	33	30	30	30	31	30	35
Blackrod CP	45	45	30	30	30	30	30	30	30	31	30	32	30	30
Sub Total	75	75	60	60	60	60	60	63	60	61	60	63	60	65
Horwich														
Horwich Parish CEP	60	60	60	60	60	58	60	58	60	57	60	54	60	50
St Catherine's CEP	30	30	30	30	30	30	30	30	30	28	30	30	30	30
Chorley New Road CP	45	49	45	44	45	41	45	40	45	38	45	38	45	36
Claypool CP	60	60	30	30	30	30	30	31	30	31	30	29	30	31
Lord Street CP	30	28	30	25	30	23	30	29	30	22	30	30	30	25
St Mary's (Horwich) RCP	30	30	30	30	30	29	30	32	30	32	30	31	30	30
Sub Total	255	257	225	219	225	211	225	220	225	208	225	212	225	202
Westhoughton														
St George's CEP	45	44	45	45	45	45	45	42	45	35	45	38	45	41
St Thomas Chequerbent CEP	30	31	30	30	30	30	30	30	30	30	30	30	30	31
St Bartholomew's CEP	30	30	30	31	30	30	30	30	30	30	30	30	30	27
St James Daisy Hill CP	60	49	60	56	60	53	60	60	60	55	60	46	60	54
Eatock CP	30	30	30	30	30	30	30	32	30	32	30	32	30	32
The Gates CP	45	42	45	45	45	45	45	43	45	45	45	42	45	46
Washacre CP	30	18	30	25	30	29	30	17	30	22	30	20	30	30
Sacred Heart RCP	60	60	60	60	60	60	60	60	60	61	60	49	60	54
Sub Total	330	304	330	322	330	322	330	314	330	310	330	287	330	315
Area Total	660	636	615	601	615	593	615	597	615	579	615	562	615	582
Places available		24		14		22		18		36		53		33

Rec	Y1	Y2	Y3	Y4	Y5	Y6
96.4	97.7	96.4	97.1	94.1	91.4	94.6

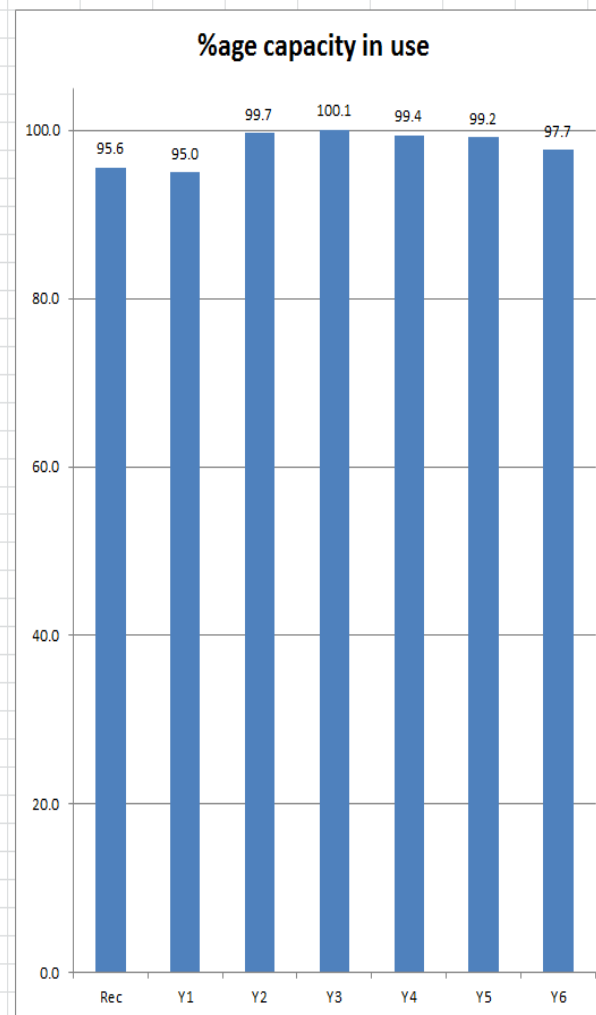


Primary School Operating Capacities

North & Central (Astley Bridge, Bromley Cross, Halliwell and Heaton)

	PAN	REC	PAN	1	PAN	2	PAN	3	PAN	4	PAN	5	PAN	6
Area 2 North & Central														
Astley Bridge														
St Paul's Academy CE	30	29	30	26	30	30	30	30	33	30	32	30	30	
High Lawn CP	60	59	60	60	60	59	60	61	60	58	60	50	60	58
Sharples CP	30	26	30	30	30	30	30	30	30	30	28	30	30	
The Oaks CP	30	30	30	30	30	30	30	30	30	30	30	30	30	29
Holy Infant CEP	30	30	30	25	30	30	30	28	30	30	30	30	30	31
Sub Total	180	174	180	171	180	179	180	179	180	181	180	170	180	178
Bromley Cross														
Walmsley CEP	60	60	45	45	45	45	45	45	60	60	45	46	45	46
Eagley Infant Academy	60	60	60	60	60	53								
Eagley Junior Academy							60	58	60	61	60	60	60	60
Egerton CP	30	31	30	29	30	31	30	29	30	32	30	32	30	32
St John the Evangelist RCP	30	30	30	29	30	30	30	30	30	30	29	30	30	30
Sub Total	180	181	165	163	165	159	165	162	180	183	165	167	165	168
Halliwell														
St Thomas Halliwell CEP	45	43	45	41	45	45	45	46	45	44	45	45	45	45
St Matthew's Bolton CEP	60	58	60	58	60	60	60	63	60	61	60	60	60	60
Brownlow Fold CP	30	29	30	30	30	30	30	30	30	28	30	30	30	30
Gaskell CP	45	47	45	48	45	50	45	47	45	49	45	44	45	48
Oxford Grove CP	60	54	60	55	60	58	60	60	60	57	60	60	60	31
St Joseph's RCP	30	30	30	30	30	30	30	30	30	29	30	30	30	30
The Valley CP	60	61	60	59	60	60	60	60	60	61	60	60	60	60
Olive School	60	32	60	38										
Sub Total	390	354	390	359	330	333	330	336	330	329	330	329	330	304
Heaton														
St Peter Smithills Dean CEP	30	30	30	30	30	30	30	30	30	28	30	30	30	31
Church Road CP	60	60	60	54	60	59	60	60	60	53	60	60	60	60
Devonshire Road CP	60	60	60	58	60	60	60	60	60	58	60	60	60	61
Gilnow CP	30	23	30	30	30	31	30	30	30	32	30	31	30	33
Markland Hill CP	45	45	45	45	45	46	45	45	45	46	45	45	45	45
St Thomas of Canterbury RCP	60	61	60	58	60	60	60	59	60	60	60	60	60	60
Johnson Fold CP	30	30	30	30	30	30	30	30	30	29	30	30	31	28
Sub Total	315	309	315	305	315	316	315	314	315	306	315	316	316	318
Area Total	1065	1018	1050	998	990	987	990	991	1005	999	990	982	991	968
Places available		47		52		3		-1		6		8		23

Rec	Y1	Y2	Y3	Y4	Y5	Y6
95.6	95.0	99.7	100.1	99.4	99.2	97.7

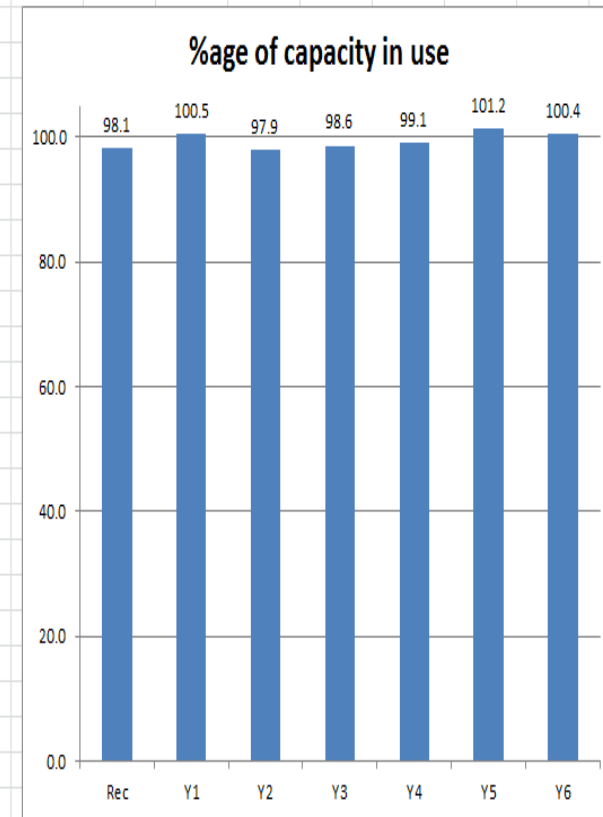


Primary School Operating Capacities

North East (Brightmet, Harwood and Tonge & The Haulgh)

	PAN	REC	PAN	1	PAN	2	PAN	3	PAN	4	PAN	5	PAN	6
Area 3 North East														
Brightmet														
Blackshaw CP	30	30	30	30	30	29	30	30	30	29	30	30	30	30
Red Lane CP	60	60	60	60	60	58	60	60	60	60	60	60	60	60
St Catherine's Academy CE	60	55	30	35	60	54	60	59	30	29	30	31	30	30
Leverhulme CP	60	59	60	57	60	60	60	59	60	59	60	57	60	58
St Osmund & St Andrew RCP	50	51	50	52	50	50	50	54	50	50	50	54	50	50
Sub Total	260	255	230	234	260	251	260	262	230	227	230	232	230	228
Harwood														
St Maxentius CEP	30	30	30	30	30	30	30	31	30	35	30	34	30	34
Hardy Mill CP	45	47	45	44	45	45	45	43	45	45	45	45	45	44
Harwood Meadows CP	30	30	30	31	30	29	30	27	30	33	30	32	30	32
St Brendan's RCP	30	30	30	30	30	30	30	30	30	30	30	30	30	30
Sub Total	135	137	135	135	135	134	135	131	135	143	135	141	135	140
Tonge/Haulgh														
Bolton Parish CEP	30	30	30	30	30	30	30	30	30	30	30	30	30	30
St Stephen & All Martyrs CEP	30	30	30	30	30	29	30	30	30	30	30	29	30	30
Castle Hill CP	30	30	30	30	30	28	30	30	30	29	30	30	30	29
Moorgate CP	60	60	30	30	30	30	60	57	30	28	30	30	30	30
Tonge Moor CP	60	51	60	59	60	60	60	56	60	54	60	60	30	30
St Columba RCP	30	30	30	30	30	30	30	30	30	29	30	30	30	30
Sub Total	240	231	210	209	210	207	240	233	210	200	210	209	180	179
Area Total	635	623	575	578	605	592	635	626	575	570	575	582	545	547
Places available		12		-3		13		9		5		-7		-2

Rec	Y1	Y2	Y3	Y4	Y5	Y6
98.1	100.5	97.9	98.6	99.1	101.2	100.4

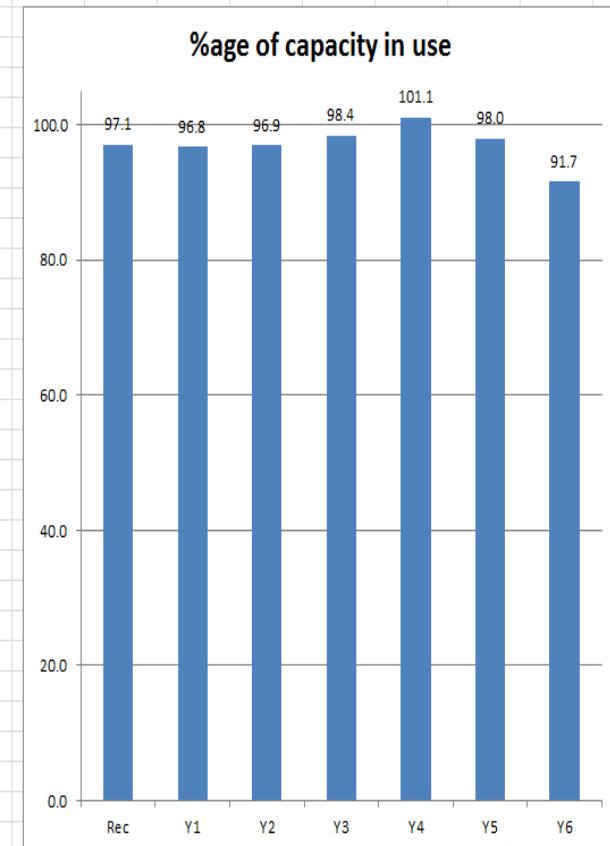


Primary School Operating Capacities

South East (Farnworth, Kearsley & Stoneclough and Little Lever)

	PAN	REC	PAN	1	PAN	2	PAN	3	PAN	4	PAN	5	PAN	6
Area 4 South East														
Farnworth														
All Saints CEP	30	30	30	30	30	30	28	30	30	30	30	30	30	30
St Peter's CEP	60	60	60	60	60	58	60	60	60	60	31	60	30	30
St James (Farnworth) CEP	45	38	45	45	45	43	45	45	45	44	45	43	45	44
Cherry Tree CP	60	60	60	58	60	59	60	59	60	61	60	58	60	61
Highfield CP	60	60	60	60	60	59	60	60	60	60	61	60	60	45
The Ferns	60	53	60	59	60	51	60	46	60	61	60	60	60	45
Queensbridge CP	30	30	30	30	30	27	30	30	30	30	30	30	30	31
Our Lady of Lourdes RCP	30	31	30	30	30	30	30	30	30	31	30	30	30	30
St Gregory's RCP	30	24	30	30	30	27	30	30	30	30	32	30	30	28
St John (Kearsley) CEP	30	25	30	30	30	30	30	30	30	30	30	30	30	30
Kearsley West CP	30	30	30	30	30	27	30	30	30	28	30	29	30	30
Sub Total	465	441	465	462	465	441	465	448	465	465	434	465	404	
Kearsley (Stoneclough)														
St Saviour Ringley CEP	30	30	30	29	30	30	31	30	30	30	30	30	30	21
St Stephen Kearsley Moor CEP	30	30	30	29	30	30	30	30	30	28	30	31	30	30
Prestolee CP	30	30	30	30	30	30	30	30	30	30	32	30	31	31
Spindle Point CP	30	30	30	30	30	30	30	30	30	30	30	30	30	30
Sub Total	120	120	120	118	120	120	121	120	118	120	123	120	112	
Little Lever														
St Matthew Little Lever CEP	30	31	30	27	30	30	32	30	31	30	32	30	32	32
Bowness CP	20	20	20	7	20	19	22	20	21	20	25	20	23	23
Masefield CP	40	40	40	34	40	35	40	40	41	40	40	40	40	40
Mytham CP	60	60	50	52	50	52	60	60	55	50	54	50	53	53
St Teresa's RCP	20	21	20	21	20	25	20	20	22	20	22	20	19	19
Sub Total	170	172	160	141	160	161	170	174	160	170	173	160	167	
Area Total	755	733	745	721	745	722	755	743	745	753	745	730	745	683
Places available		22		24		23		12		-8		15		62

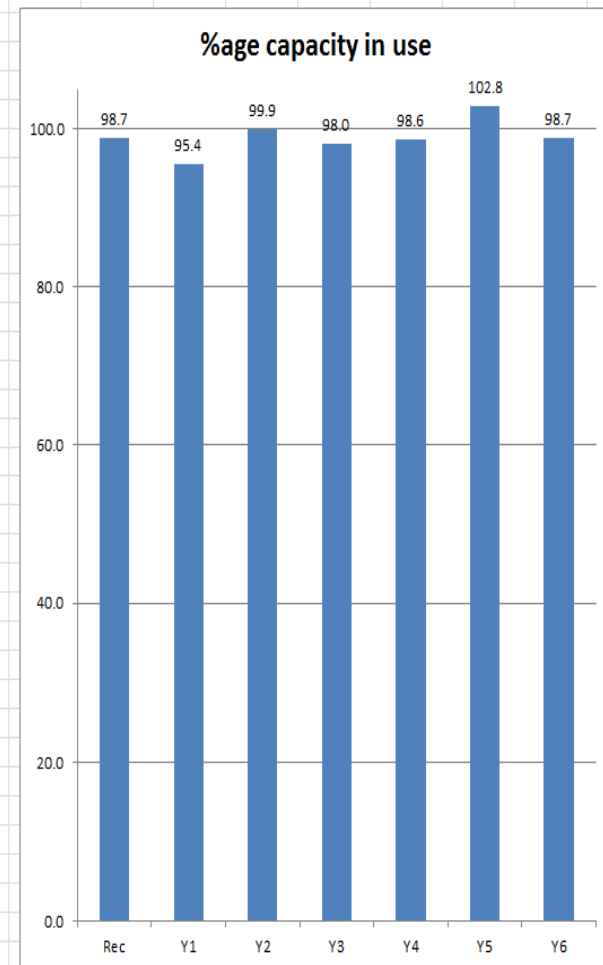
Rec	Y1	Y2	Y3	Y4	Y5	Y6
97.1	96.8	96.9	98.4	101.1	98.0	91.7



Primary School Operating Capacities

South (Daubhill, Deane, Great Lever and Morris Green)

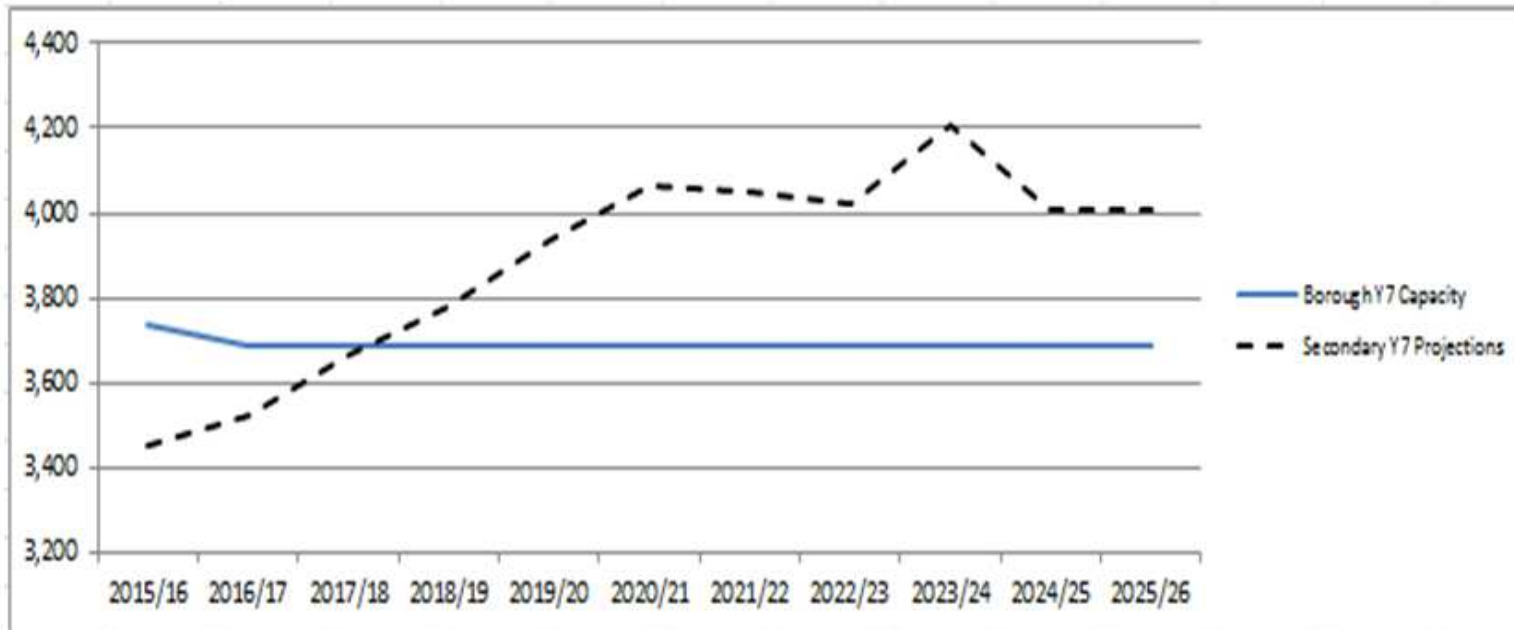
	PAN	REC	PAN	1	PAN	2	PAN	3	PAN	4	PAN	5	PAN	6
Area 5 South														
Daubhill														
Brandwood CP	60	59	60	60	60	59	60	59	60	58	60	60	60	60
Pikes Lane CP	60	60	60	60	60	60	60	60	60	60	60	60	60	63
Sunning Hill CP	60	60	60	60	60	61	60	63	60	60	60	64	60	64
Haslam Park CP	45	39	45	44	45	45	45	44	45	45	45	45	45	46
St Ethelbert's RCP	30	30	30	30	30	30	30	30	30	30	30	30	30	30
Sub Total	255	248	255	254	255	255	255	256	255	253	255	259	255	263
Deane														
St Mary's Deane CEP	60	60	60	53	60	60	60	60	60	68	60	70	60	70
Beaumont CP	30	30	30	30	30	30	30	32	30	32	30	32	30	32
St Bernard's RCP	30	29	30	31	30	29	30	31	30	30	20	21	20	21
Ladybridge CP	60	60	60	41	60	60	60	59	60	59	60	60	60	32
Lostock CP	30	30	30	29	30	30	30	30	30	30	30	30	30	30
Sub Total	210	209	210	184	210	209	210	212	210	219	200	213	200	185
Great Lever														
Bishop Bridgeman CEP	60	60	60	60	60	60	60	59	60	60	60	62	60	62
St Michael's CEP	60	60	60	59	60	60	60	62	60	61	60	61	60	51
SS Simon & Jude CEP	60	60	60	60	60	60	60	60	60	60	60	60	60	60
Clarendon CP	60	60	60	60	60	61	60	60	60	60	60	61	60	61
SS Peter & Paul RCP	30	28	30	30	30	29	30	31	30	30	30	29	30	29
St William of York RCP	30	30	30	30	30	30	30	30	30	30	30	30	30	30
Sub Total	300	298	300	299	300	300	300	302	300	301	300	303	300	293
Morris Green														
St Andrew Over Hulton CEP	30	30	30	29	30	30	30	31	30	32	30	32	30	32
St Bede CEP	90	86	90	86	90	90	90	90	60	63	60	61	60	60
Heathfield CP	30	31	30	30	30	30	30	28	30	28	30	32	30	30
Lever Edge CP	60	60	60	60	60	60	60	60	60	60	60	61	60	60
The Olive Tree	60	60	60	60	60	60	60	60						
ESSA Primary	60	59	60	43	60	60	60	34	60	34				
Sub Total	330	326	330	308	330	330	330	303	300	277	180	186	180	182
Area Total	1095	1081	1095	1045	1095	1094	1095	1073	1065	1050	935	961	935	923
Places available		14		50		1		22		15		-26		12



Secondary School Pupil Projections

Projected Year 7 Intakes against Capacity

	2015/16	2016/17	2017/18	2018/19	2019/20	2020/21	2021/22	2022/23	2023/24	2024/25	2025/26
Borough Y7 Capacity	3,739	3,689	3,689	3,689	3,689	3,689	3,689	3,689	3,689	3,689	3,689
Secondary Y7 Projections	3,449	3,523	3,663	3,780	3,938	4,066	4,051	4,022	4,205	4,007	4,007
Surplus/Shortfall	290	166	26	-91	-249	-377	-362	-333	-516	-318	-318

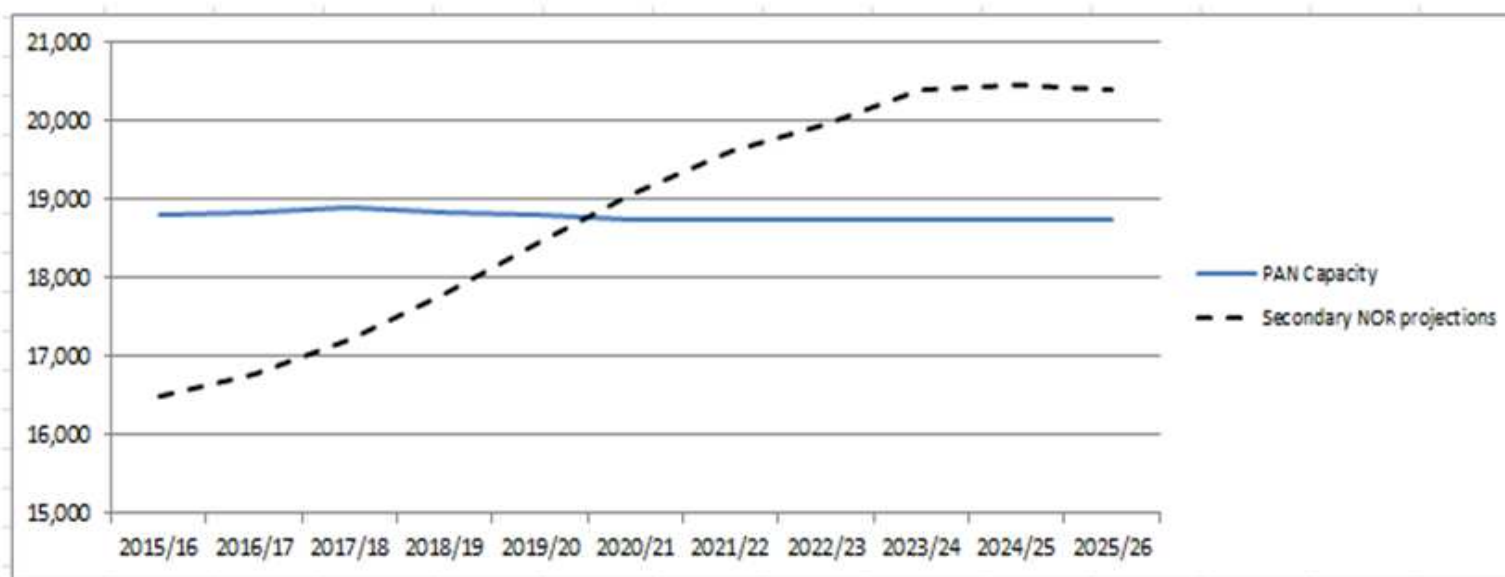


Total Year 7 capacity will be exceeded by September 2018, but the 'effective' capacity will be exceeded by September 2017

Secondary School Pupil Projections

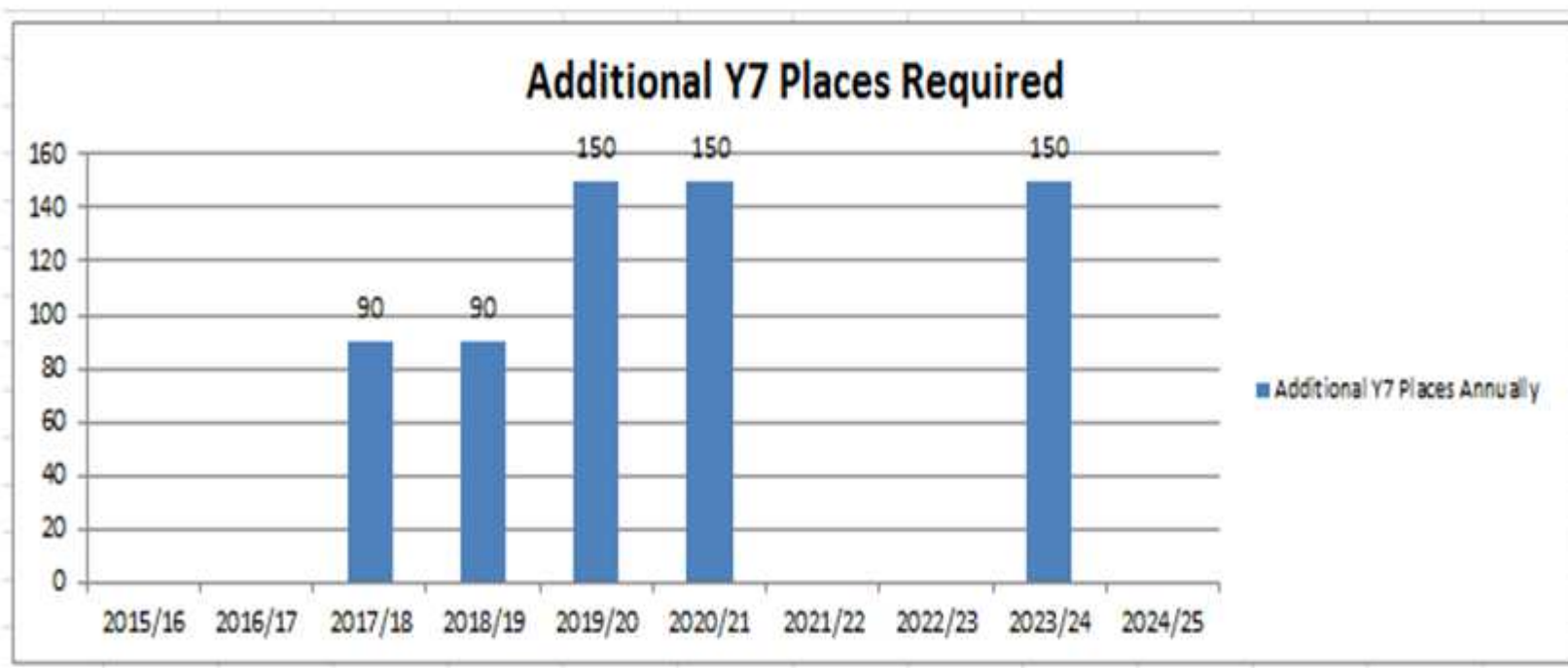
Total Secondary Capacity against Total Projected Numbers on Roll

BOLTON SECONDARY PUPIL NOR PROJECTIONS AGAINST CURRENT PAN CAPACITY (INCLUDES 300 PLACES AT UTC)											
	2015/16	2016/17	2017/18	2018/19	2019/20	2020/21	2021/22	2022/23	2023/24	2024/25	2025/26
PAN Capacity	18,795	18,845	18,895	18,845	18,795	18,745	18,745	18,745	18,745	18,745	18,745
Secondary NOR projections	16,496	16,780	17,202	17,796	18,446	19,076	19,615	19,977	20,397	20,465	20,404



Total secondary place capacity will be exceeded by September 2020, but 'effective' capacity is expected to be exceeded by September 2019

Secondary School Minimum Expansion Requirements



Equates to over 2,500 additional secondary school places

Proposed Secondary School Expansions

- Where?
 - Geographical variations, North, South and West
- Which Schools?
 - Popular
 - Successful
 - Location
 - Practicalities of Expansion
 - Condition Need
 - Opportunity to rationalise PAN
 - Cost effective?
- Free Schools?

Other Pupil Place Pressures

- In Year Admissions
- Greater Manchester Spatial Development and New Housing Proposals
- Special School Place Pressures

Questions?