



Primary Outcomes

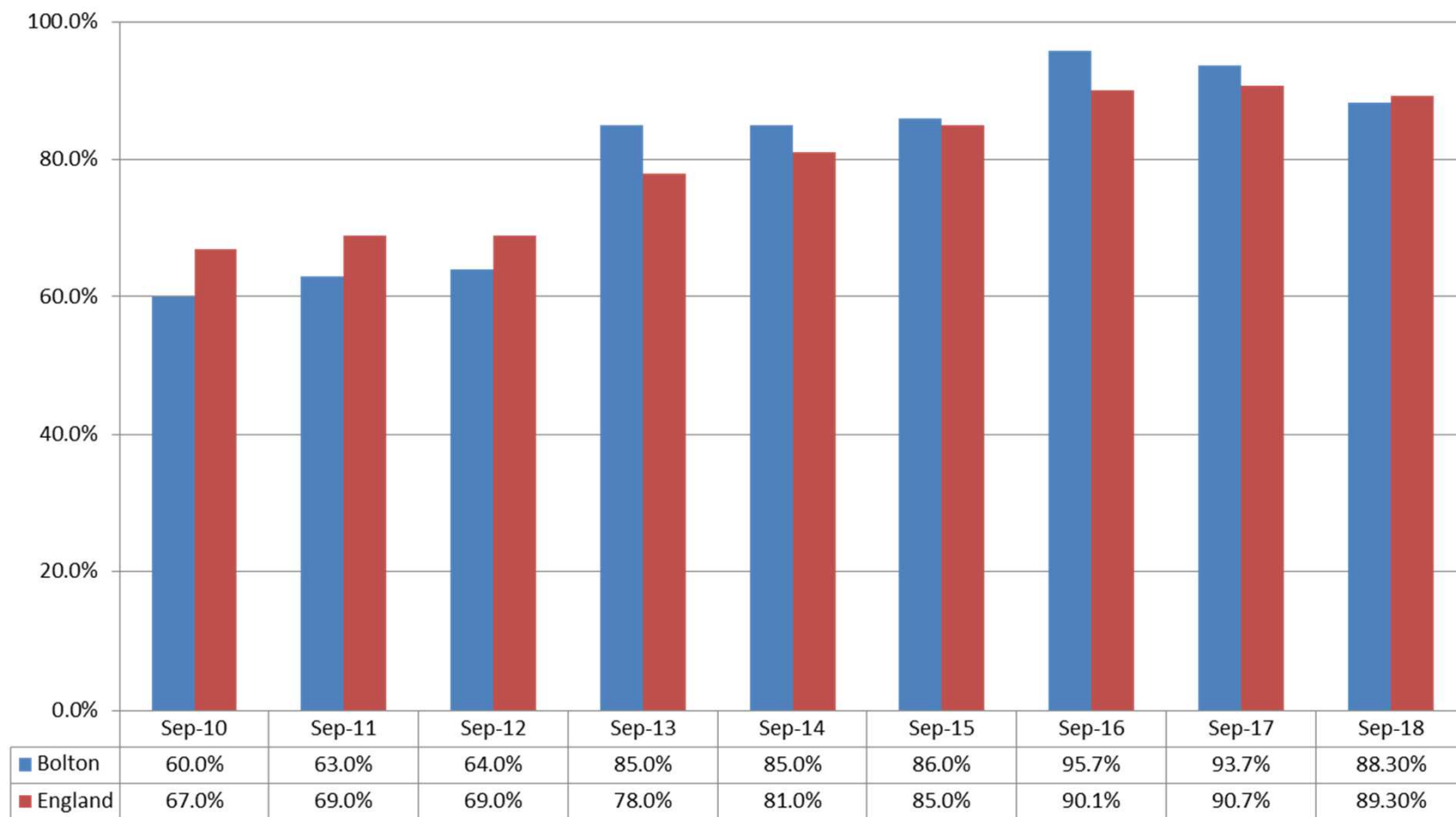
Scrutiny Committee

8th October 2018

Bolton
Council

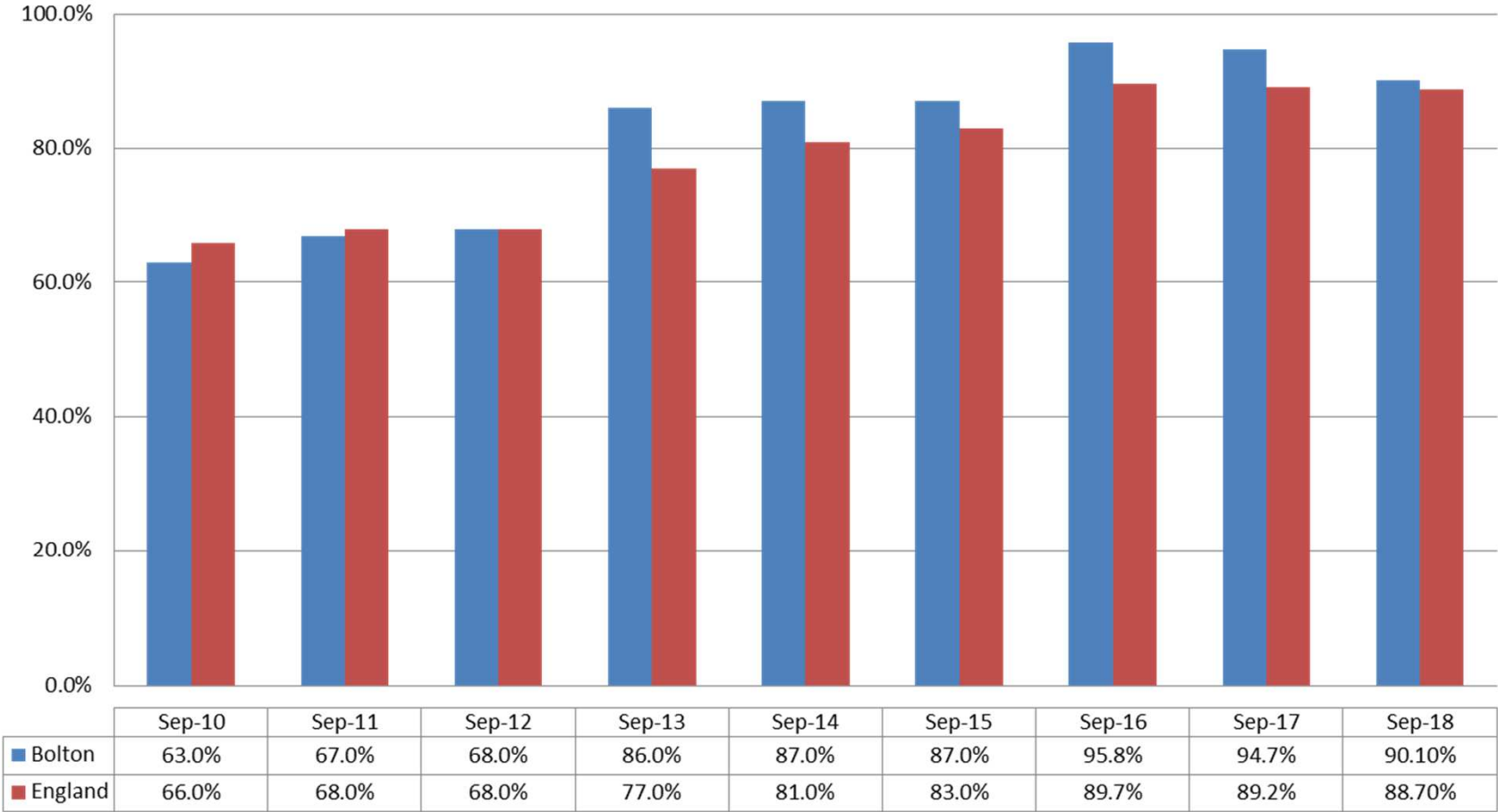


Primary Schools Good or Better - Sept 2018

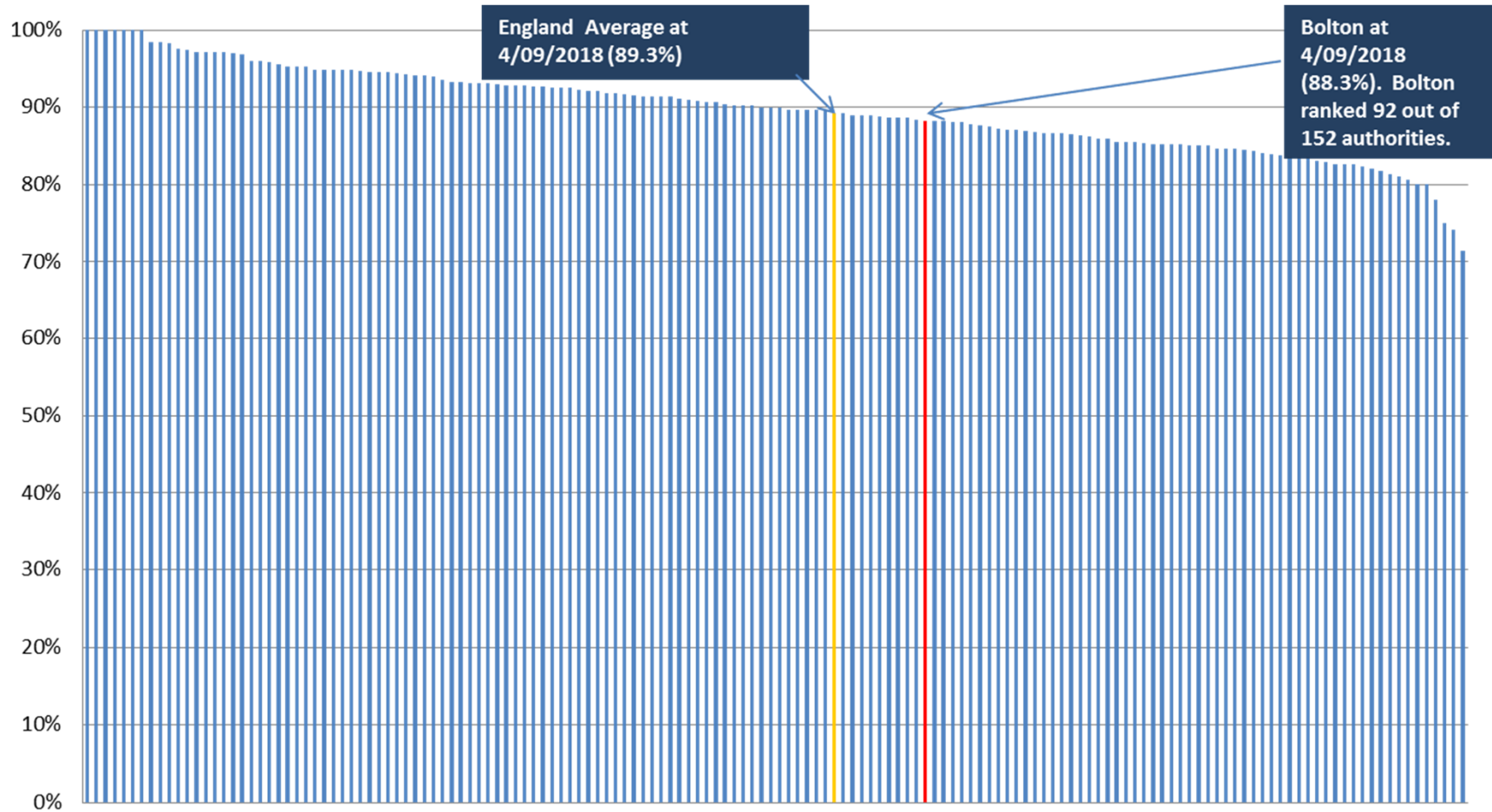




% of pupils attending a good or better Primary School - Sept 2018



Percentage of Primary Schools Good or Better - September 2018





Key Stage 1



KS1 outcomes compared with national Expected Standard				
	Reading	Writing	Maths	RWM
Bolton 2018	73	68	74	64
National 2018	75	70	76	65

KS1 outcomes compared with national Greater Depth Standard				
	Reading	Writing	Maths	RWM
Bolton 2018	23	16	21	11
National 2018	26	16	22	12



Key Stage 2



KS2 outcomes at the Expected Standard +				
	Reading	Writing	Maths	RWM
Bolton 2018	73	79	76	64
National 2018	75	78	76	64




KS2 outcomes at the Higher Standard				
	Reading	Writing	Maths	RWM
Bolton 2018	24	20	24	10
National 2018	28	20	23	10



Sufficient Progress in Reading KS1 – KS2			
	2016	2017	2018
Bolton	-0.1	-0.4	+0.3
National	0	0	0

Sufficient Progress Writing KS1 – KS2			
	2016	2017	2018
Bolton	+0.4	+0.4	+0.9
National	0	0	0

Sufficient Progress Maths KS1 – KS2			
	2016	2017	2018
Bolton	+1.1	+0.8	+0.9
National	0	0	0



Impact of Activities 2017-2018

- Improved standards at KS1 and KS2 across all subjects
- Targeted schools made significant gains in Reading outcomes
- Moderation Process across KS1-KS2 is recognised as strong by STA
- Revised and improved Data Pack received well by schools
- Primary School Improvement Service traded service implemented and buy back continued into the 2nd year
- Focused visits continue to support and challenge standards and quality in schools
- Bespoke CPD has been provided for all schools and attendance has been good
- Continued use of data analysis to identify schools and groups of pupils in most need of support followed by focused visits that continue to support and challenge standards and quality in primary schools



Priorities 2018-2019

- Bespoke professional development for targeted schools in teaching and learning linked with the University of Bolton in order to narrow the gap between the LA and National at the expected standard at the end of KS1 in all subjects
- Provision of further targeted CPD to support schools in the teaching of Reading to narrow the gap between the LA and National at KS1 at greater depth and at KS2 at both the expected and higher standard
- Commission more time from Associate School Improvement Professionals in order to provide further support and challenge to schools identified as vulnerable to an Ofsted category