

Local Leadership in the context of Covid and the impact on children and young people in Bolton

Scrutiny Panel July 2021





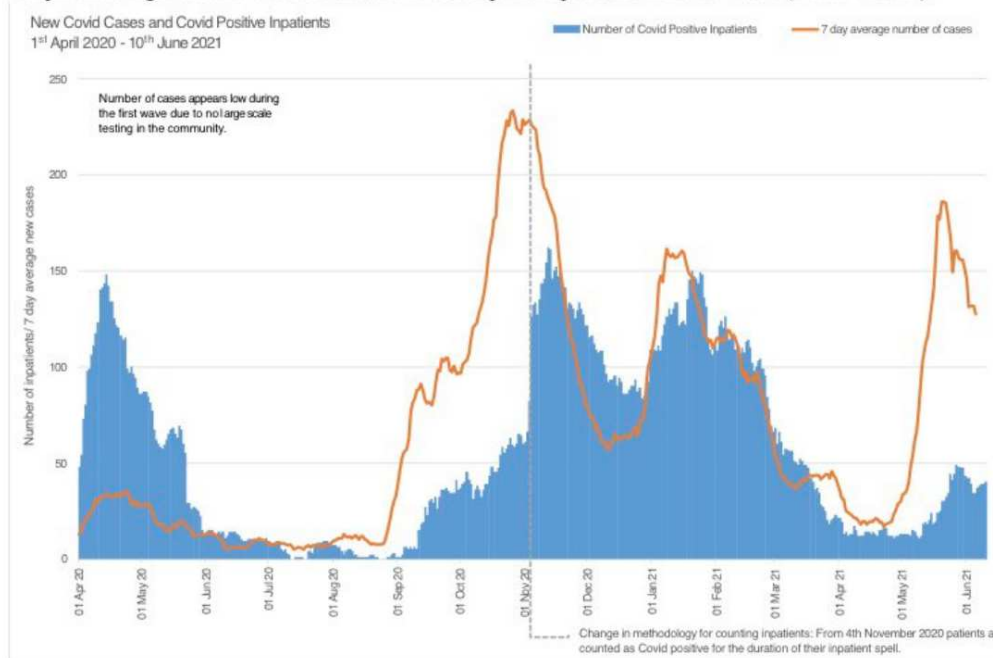


March – April 2020

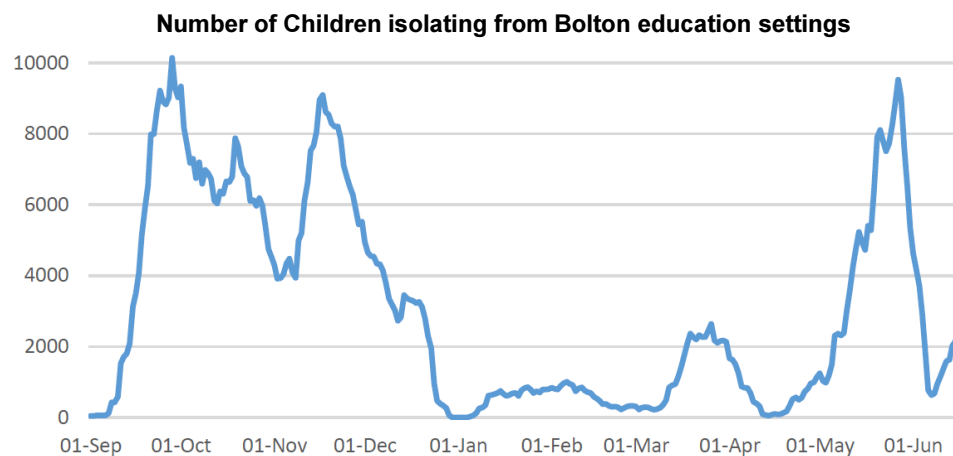
- Emily Jones
- Ian Walker started at Bolton Council
- National Lockdown
- Colocation of social care staff at Castle Hill, other staff deployed to Humanitarian response
- **Council led system response to support the most vulnerable and to get vulnerable children back into school**
- Flexible approach to supporting vulnerable staff
- Visible leadership within Council Offices and Schools
- Continued support for Young People

COVID-19 Bolton Data

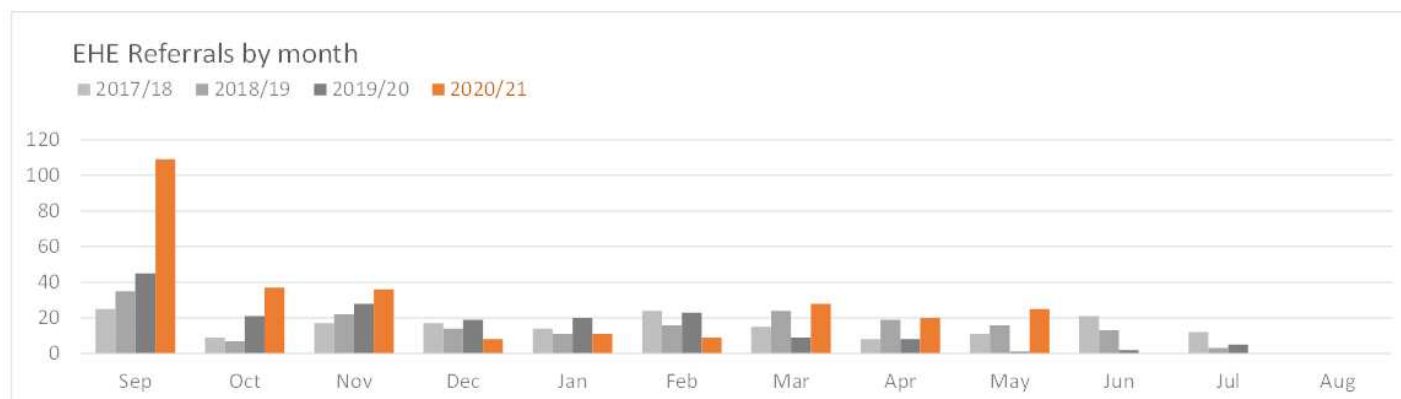
Graph showing Bolton's 4 waves and the lower inpatient pressure in latest wave (Delta Variant)



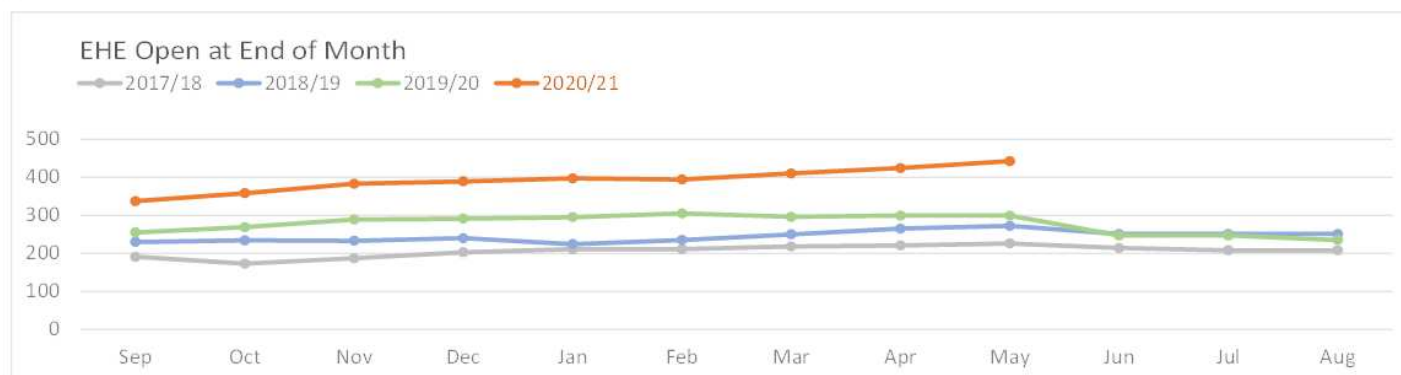
- 4 waves in Bolton
- Since first wave – business as usual for social care teams
- Bolton children lost more face to face teaching than in any other LA



Elective Home Education

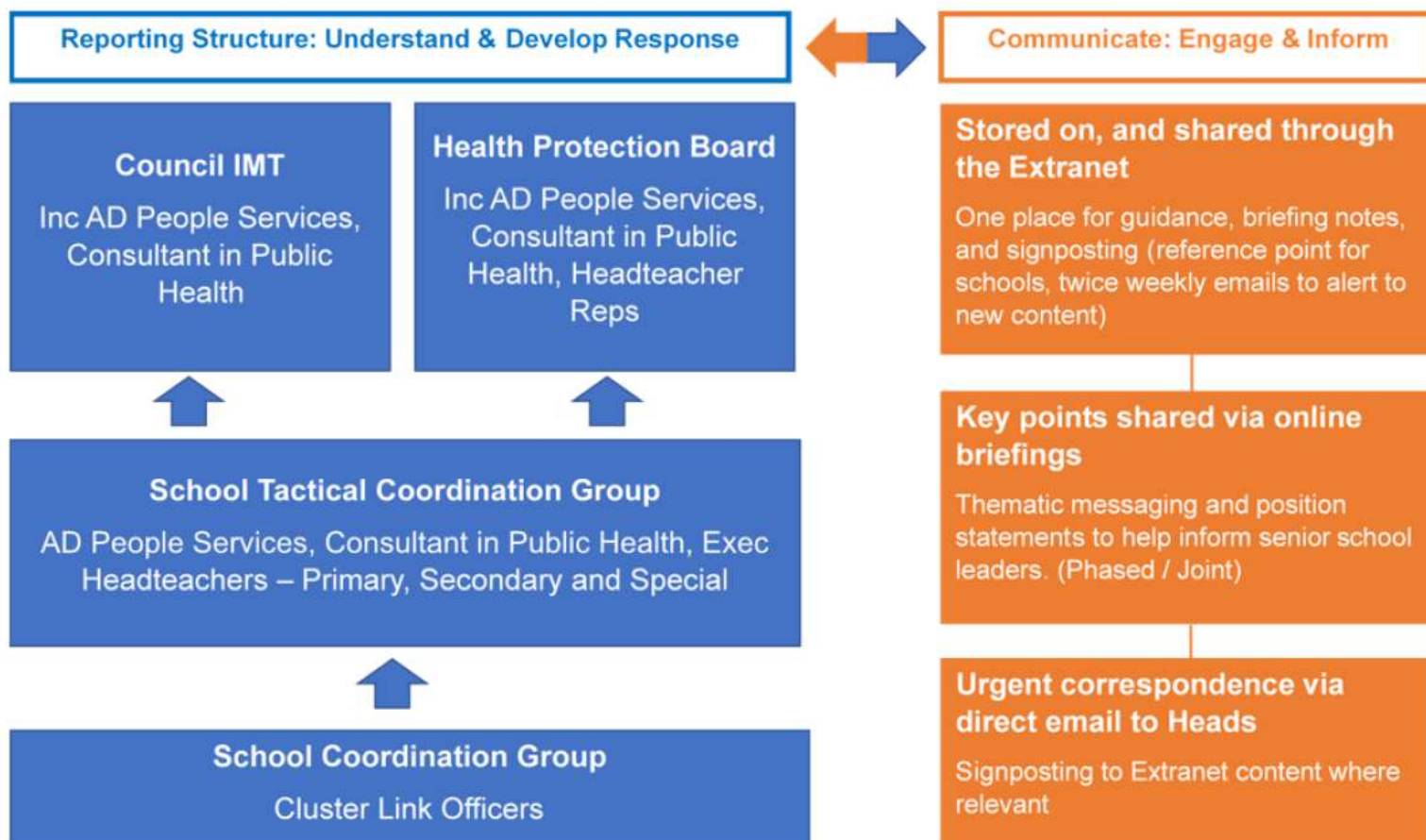


- Currently 452 children EHE
- 104 (23%) state COVID as the reason



System Leadership Structure

Coproduction of pandemic response





Impact on Children

What we did....

- Linked to schools pastoral teams
- Letters to heads clarifying reporting expectations for most vulnerable
- Communication
- Daily meetings
- Keeping in touch – Leaving care offer
- Foster carer support
- Role of the humanitarian hub
- System response to tragedy – kinship and financial support

Public Law Data

Snapshot March 21

- 59 open cases (114 children)
- 19 cases (32.2%) with delay which was assessed to have impact on the child. Of which:
 - 23.7% (14 cases) had a delay which could be mitigated
 - 8.5% (5 cases) had a delay with a severe impact on the child
- 10.2% of cases reported 'Expert Evidence' as the most common reason for delay in Bolton
- 42.4% (25) of cases have exceeded 26 weeks in Bolton
- All of the cases with severe delay have exceeded 26 weeks



Regional and National Communication and Coordination

- Ofsted Regional Director
- National and Regional School Commissioners
- Education Unions – National Secretaries
- Cabinet Office
- Greater Manchester Combined Authority

Examples...

- Supporting schools with high mortality within the community
- Decision making – facemasks and transition
- Local decision making that is timely and focused on the right thing for Bolton children
- Managing emotional wellbeing across the system – providing resilience
- Humanitarian system response
- Delta Variant – community vaccine delivery and surge testing on school sites with military support
- Children's Commissioner visit
- Brave Leadership



#TeamBolton

- Emotionally intelligent and compassionate leadership
- Resilient leadership
- Coproduction and collaboration at the heart
- System leadership at pace – responsive
- Trade Union engagement and support
- Celebrating The Bolton Family Success in Complex times