



Secondary Outcomes

Geraldine Whitehead

11-25 Team Manager



Key changes at Key Stage 4

- Staggered intro of grading by numbers 9-1 rather than by the current letters A*- G. Progress 8 & Attainment 8
- No more modular courses, full exams taken at the end of two years
- Controlled assessments & coursework will be scrapped for almost all subjects
- More, longer exams (minimum 3.5 hours per subject)
- Exams to be based on a more stretching, essay-based system
- Syllabus content made more challenging to better prepare for further education
- Pass marks to be pushed higher
- Removal of tiers from most subjects

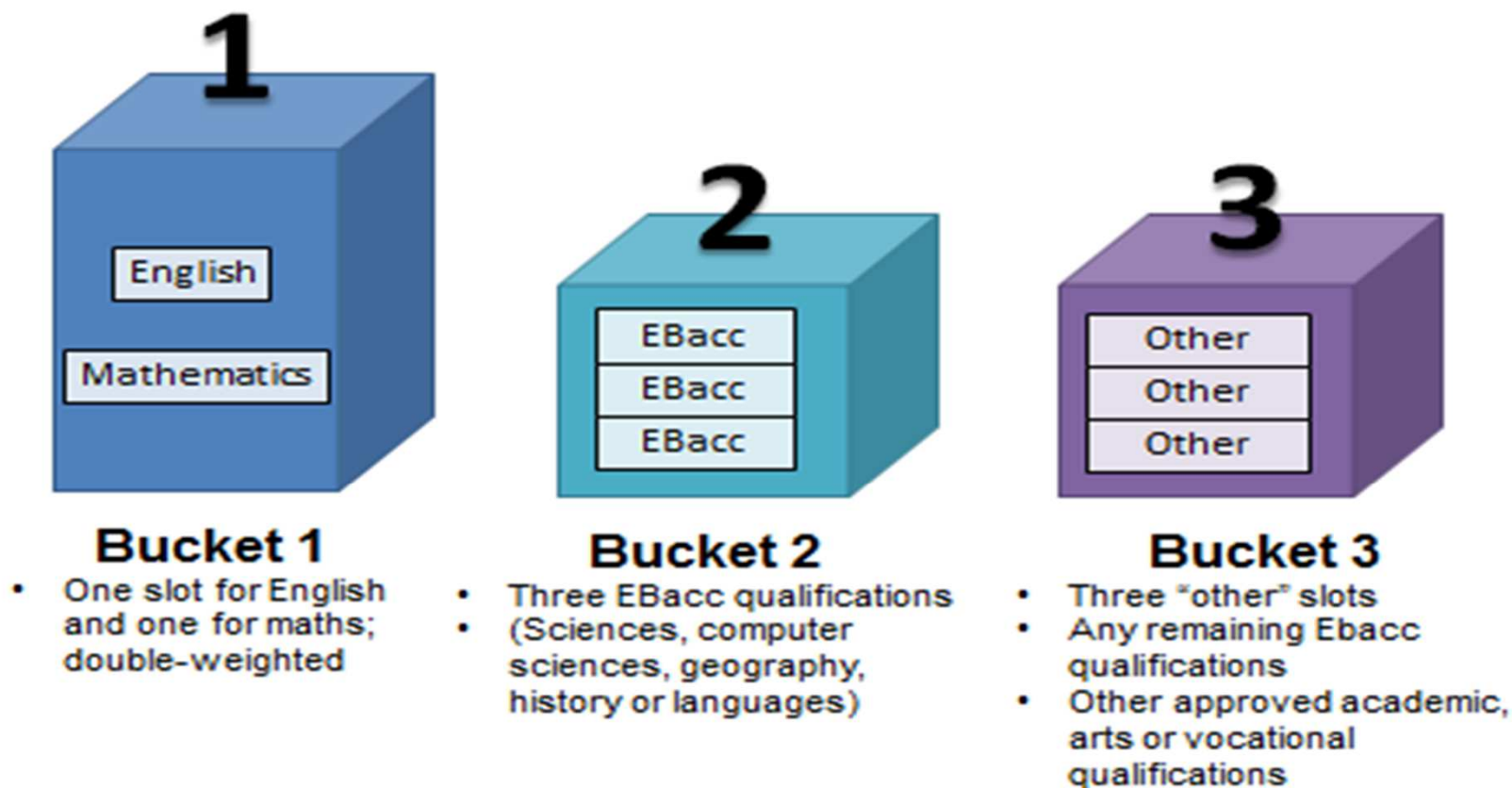


Progress 8 & Attainment 8

- Progress 8 is a new secondary accountability measure introduced in 2016
- The Progress 8 score is based on pupils performance across 8 subjects – this performance score is known as the “Attainment 8” score.
- The Attainment 8 measure will take the average of a pupils points across a set of their best 8 subjects.
- The 8 qualifications that count towards the Attainment 8 measure must fall into one of three “elements” If a qualification does not fall into one of these elements, it is not counted in the measure

The Elements

The Attainment 8 Buckets



Grading new GCSEs from 2017

New grading structure	Current grading structure
9	A*
8	
7	
6	B
5	
4	
3	C
2	
1	
U	U

GOOD PASS (DfE)

5 and above = top of C and above

AWARDING

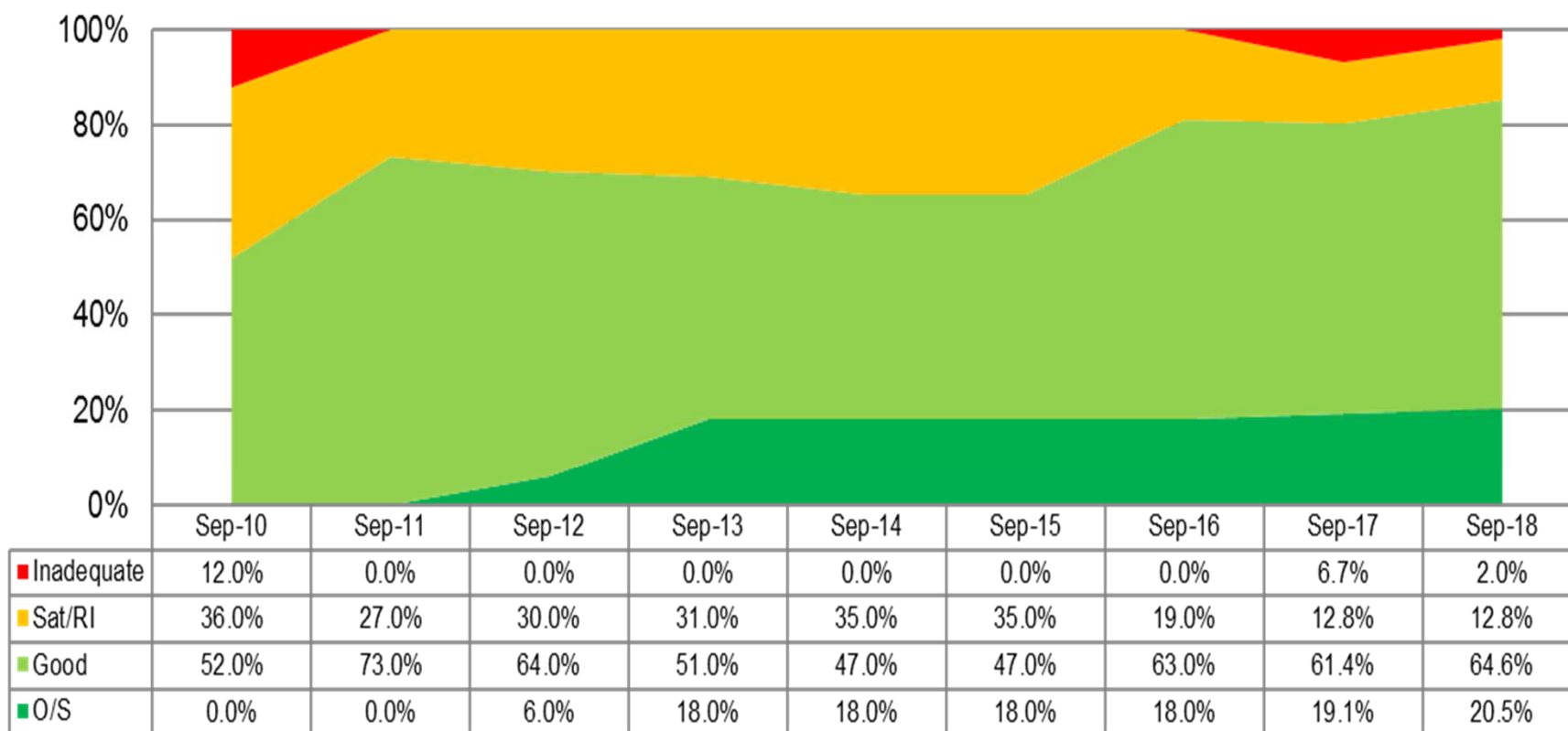
4 and above = bottom of C and above

Students celebrating their Grade 9's



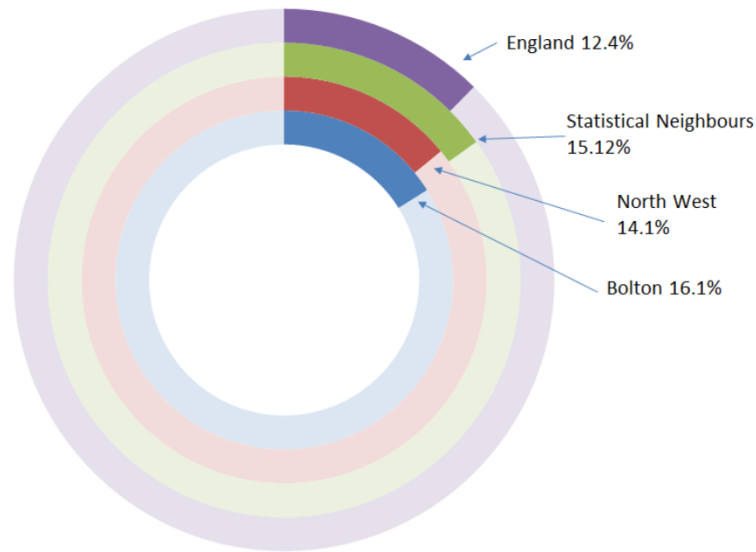


Bolton – Pupils in Secondary Schools by Inspection Judgements

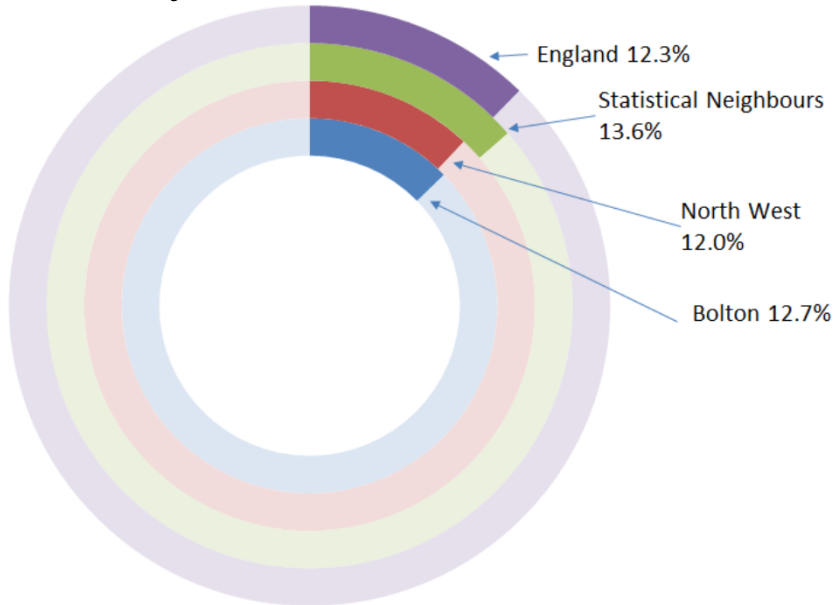




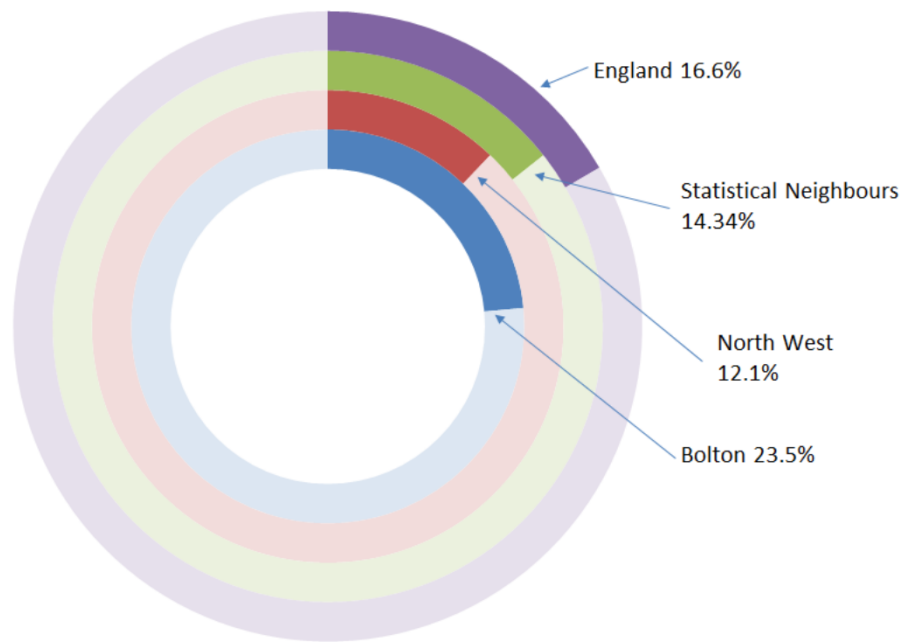
Secondary FSM



Secondary SEN

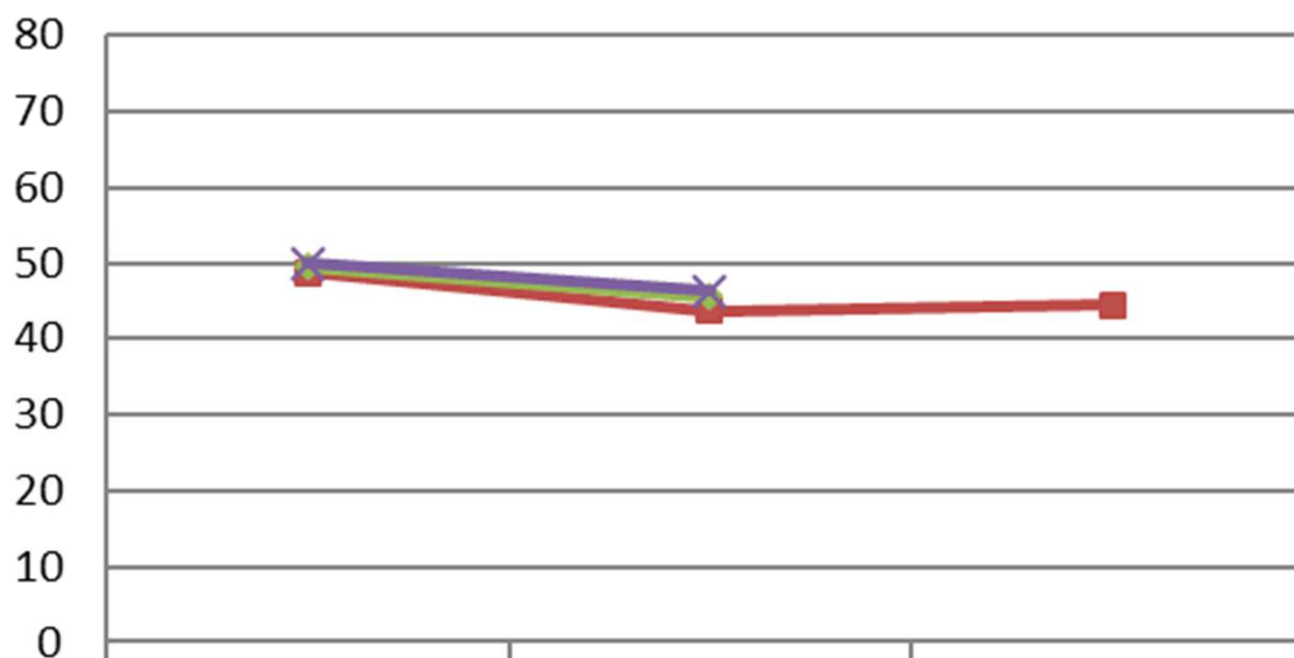





Secondary EAL





Attainment 8 - All Pupils

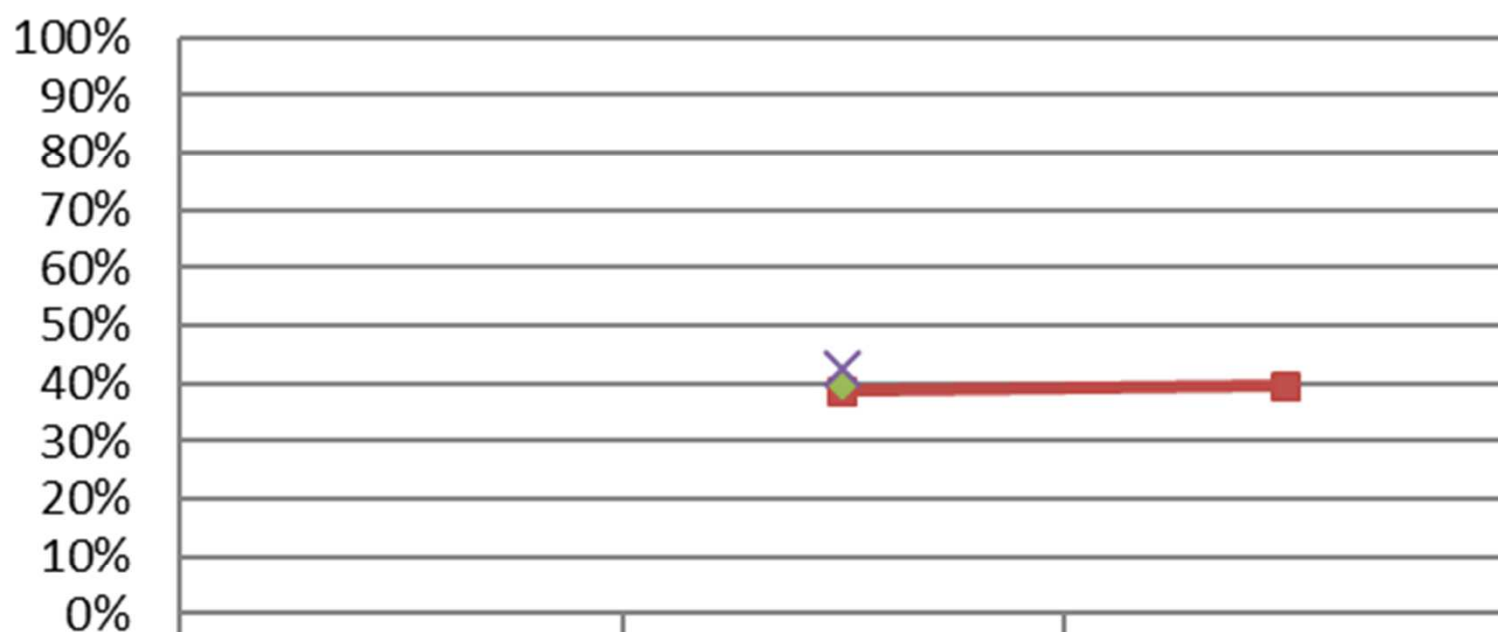





	2016	2017	2018
 Bolton	48.7	43.7	44.5
 GM	49.5	45.5	
 National	49.9	46.3	

Provisional results for Bolton 2018

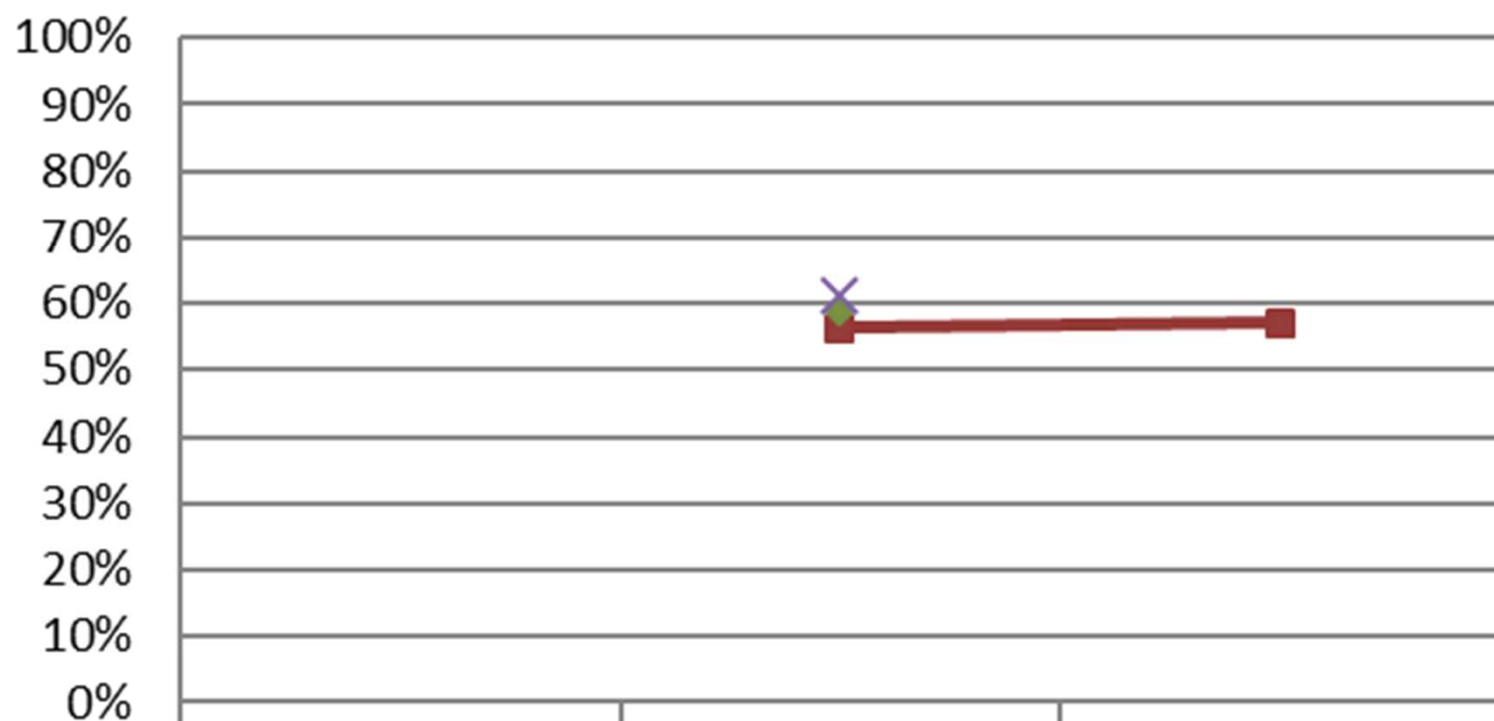
2018 National and LA results are due to be published on the 16th October

Grade 5 or Above in English & Maths - All Pupils



	2016	2017	2018
 Bolton		39%	40%
 GM		40%	
 National		43%	

Grade 5 or Above in English - All Pupils



—■— Bolton

—◆— GM

—×— National

2016

2017

2018

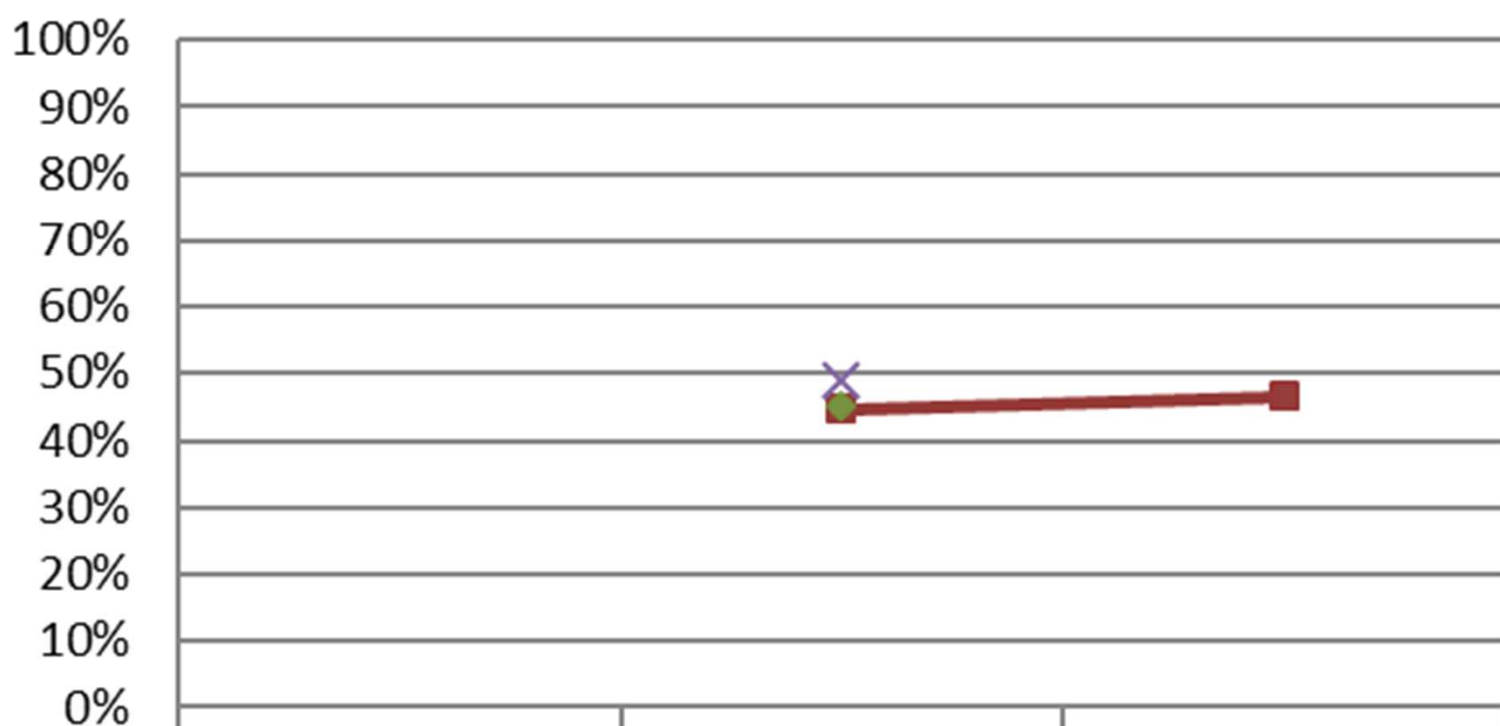
56%

57%

59%

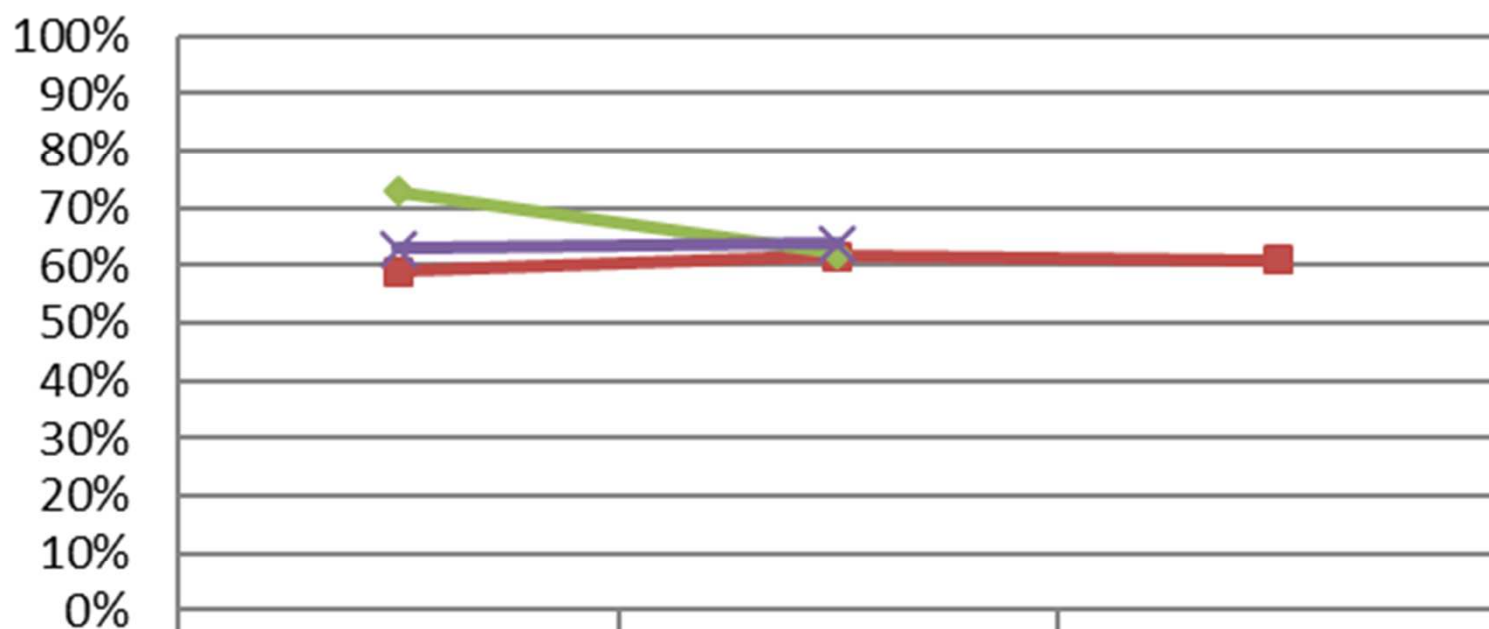
61%

Grade 5 or Above in Maths - All Pupils



	2016	2017	2018
 Bolton		45%	47%
 GM		45%	
 National		49%	

Grade 4/C or Above in English & Maths - All Pupils



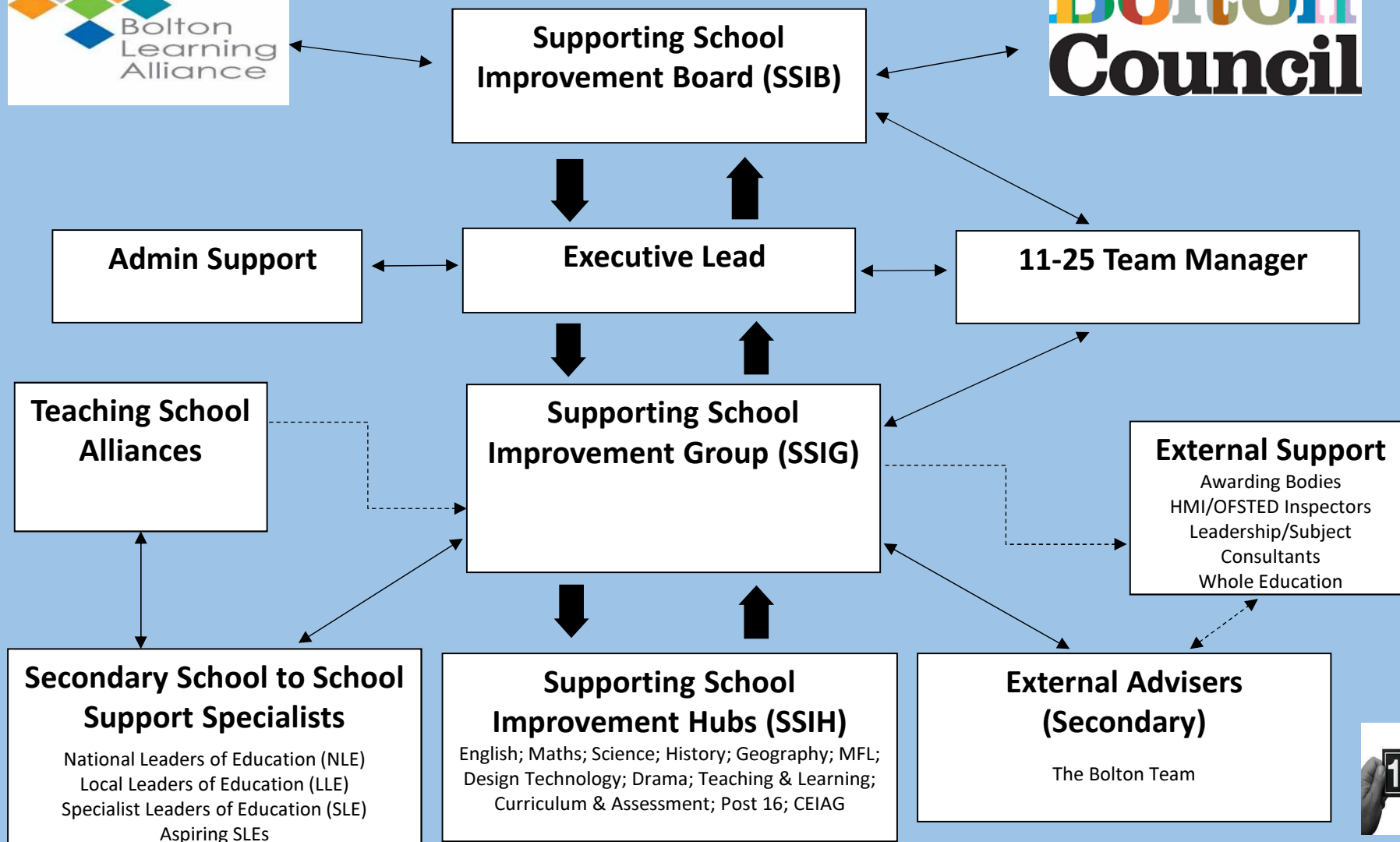
	2016	2017	2018
■ Bolton	59%	62%	61%
◆ GM	73%	62%	
× National	63%	64%	



Current picture

- 17 heads been in post less than 2 years
- More secondary schools joining the partnership
- Improvements in all key measures – however more to do
- External Review of the system –former HMI

The Bolton Learning Partnership 2018-19





Key LA work to address:

Council is a key partner in

The Bolton Learning Partnership

- Appointed Executive Lead
- New website created & twitter @BLP19k
- All 24 schools in membership
- Increase in range and level of activity