

# Habitats Regulations Assessment of the Impact on European Protected Sites of Bolton Council's Core Strategy (Publication Document)

October 2009



**Prepared by**

**The Greater Manchester Ecology Unit  
Ryecroft Hall  
Manchester Road  
Audenshaw  
Manchester**

**For**

**Bolton Metropolitan Borough Council**

***October 2009***

## Table of Contents

Table of Contents .....	3
1 Introduction .....	4
2 Brief description of The Plan.....	6
3 Identification of European Designated Sites Concerned .....	13
4 Summary of the Screening Opinion – Bolton Core Strategy (Publication Document) .	16
5 Consideration of ‘In Combination’ Effects with Other Plans and Proposals.....	17
6 Summary and Recommendations.....	18
Figure 1: Bolton’s Spatial Elements – Town Centre, Renewal Areas & Outer Areas .....	19
Figure 2: Bolton’s Spatial Elements – Spatial M61 .....	20
Figure 3 – Map Showing Location of European Sites within Greater Manchester and in Close Proximity to the County (edged pink) and Bolton (edged black).....	21
REFERENCES .....	22
APPENDIX 1: European designated sites within the North West Region and possible effects from development within Bolton MBC.....	23
APPENDIX 2: Screening Summary of European designated sites within the North West Region and possible impacts from development within Bolton MBC.....	38
APPENDIX 3 – List of Other Plans and Projects Considered within the Assessment .....	42

# 1 Introduction

- 1.0 Article 6(3) of the European Habitats Directive dealing with the conservation of European protected sites states that:
- 1.1 *‘Any plan or project not directly connected with or necessary to the management of the site but likely to have a significant effect thereon, either individually or in combination with other plans and projects, shall be subject to assessment of its implications for the site in view of the site’s conservation objectives. In light of the conclusions of the assessment of the implications for the site and subject to the provisions of paragraph 4, the competent national authorities shall agree to the plan or project only after ascertained that it will not adversely affect the integrity of the site concerned and, if appropriate, after having obtained the opinion of the general public.’*
- 1.2 Under the terms of amendments made to the Habitats Directive in 2007 the following relevant land-use plans are considered to require a Habitats Regulation Assessment:
- 1.3 The Regional Spatial Strategy under Part 1 of the 2004 Planning Act.
- 1.4 A Local Development Document as provided for in Part 2 of the 2004 Planning Act other than a statement of community involvement.
- 1.5 The Core Strategy of Bolton Metropolitan Borough Council's Local Development Framework is considered to be a Local Development Document (a ‘Plan’) that falls under Part IV, 85A-(2) of the 2007 Habitats Regulations Amendments and therefore is required to be subject to a Habitats Regulations Assessment (to be taken at least through the screening stage (Stage 1)).
- 1.6 European protected sites (the ‘Natura 2000 Network’) are of exceptional importance for the conservation of important species and natural habitats within the European Union. The purpose of Habitats Regulation Assessment (HRA) of land use plans is to ensure that protection of the integrity of European protected sites is an integral part of the planning process at a regional and local level. The network of European protected sites comprises Special Protection Areas (SPAs), Special Areas of Conservation (SACs) and Ramsar sites. Government guidance advises that potential SPAs (pSPA), candidate SACs (cSAC) and potential Ramsar (pRamsar) sites are also included in HRAs.
- 1.7 An earlier iteration of the HRA (GMEU May 2008) looked at the Issues & Options presented by Bolton MBC for consultation. This Assessment concluded that;-
- No direct impacts on European sites would occur within Bolton
  - No sites occur in the immediate vicinity of the District where likely significant impacts could occur
  - There were no distal European sites with pathways to the District where localised ‘in combination’ effects would occur
  - ‘In combination’ impacts may need to be reconsidered at a later stage
  - Further work may be required once the Core Strategy had developed further.
- 1.8 This report looks at the Core Strategy (Publication Document) (hereafter referred to as ‘The Plan’) prior to public consultation in January 2010. This report;-
- Provides a summary of the spatial elements of The Plan and its Core Policies.
  - Identifies by a screening process any European site that could potentially be affected by either development in areas selected by Bolton MBC as spatial elements or affected by Core Policies outlined within The Plan.
  - Outlines details of the nature conservation importance of any European sites ‘screened in’ to the process.

- Identifies the possible impacts that the Core Policies in The Plan or of development within the spatial element may have on features of nature conservation importance within European sites.
- Assesses development or Core Policy impacts that could potentially have a significant effect on the favourable conservation status of European sites.
- Identifies controls within The Plan and other development plan documents, strategies, policies and plans that could act to avoid or mitigate these effects.
- Proposes amendments and alterations to plans and policies where necessary to avoid these impacts.
- Identifies sites and development proposals that will require further Assessment as part of the ongoing HRA of Bolton's Core Strategy.

1.9 Habitats Regulation Assessments can be seen as having a number of discrete stages -

Stage 1 - Screening

Stage 2 – Appropriate Assessment

Stage 3 – Assessment of Alternatives

Stage 4 – Assessment where no alternatives are available

1.10 This report comprises Stage 1 of the Habitats Regulation Assessment process and contributes to the fulfilment of the Council's statutory duty as regards Article 6(3). That is, it is an Opinion on, and an Assessment of, whether or not the selection of the spatial elements for development and the Core Policies identified within Bolton Council's Core Strategy (Publication Document), may have a significant effect on the special interest of any European designated protected sites. It is also an Opinion on, and an Assessment of, whether any of the identified effects (if any) can be avoided or mitigated or whether any of the spatial elements need to be deselected or whether the wording of the Core Policies need to be amended.

1.11 It is noted that The Plan being assessed is the Publication Document of the Core Strategy, which will be subject to one more public consultation before completion. It is anticipated that at this stage the Plan is nearly in its completed version. However, further consideration will be given, once comments have been submitted and analysed, as to whether the current HRA needs to be reassessed. If no further changes are made to the Core Strategy following this consultation this will be the final HRA for that document. There is no statutory guidance on what stage of Plan production to best prepare an HRA but Natural England recommends that HRA begins at an early stage and if necessary continues through all the stages of plan production. HRA Methodologies are at a relatively early stage of development and examples of Best Practice have not yet emerged. As Best Practice emerges the methodology undertaken for this HRA may develop.

1.12 The Greater Manchester Ecology Unit (GMEU), as the specialist ecological adviser to Bolton Council, has prepared this Screening Opinion. Natural England and the JNCC were consulted for information on the conservation objectives and favourable condition tables for the European Sites concerned (the information is summarised below). GMEU ecologists, who are familiar with the European sites concerned and their special interest, reviewed the ecological information for the site. The key vulnerabilities and sensitivities of the European sites concerned are well understood by GMEU as are the impact pathways which may affect a European site, allowing for an informed assessment of the possible effects of The Plan, and any specific aims, objectives and policies contained in The Plan.

## 2 Brief description of The Plan

- 2.0 The Plan being assessed is Bolton's Core Strategy (Publication Document). The Plan will:
- Outline the Council's vision for Bolton up to the year 2026 and how managing the change necessary to achieve this vision is envisaged.
  - Provide a strategic framework against which decisions about the use of land can be planned.
- 2.1 Bolton has consulted on Issues & Options (July 2007) and the Preferred Options (August 2008). The details of these consultations are not repeated in this document but can be found in the Core Strategy documentation that should be read alongside this HRA.
- 2.2 For the purposes of this Assessment The Plan is not complete; further iterations will likely arise following consultation on The Plan. An opinion is being sought at this stage of Plan development to ensure that the requirements to meet terms of the Regulations regarding Habitats Regulation Assessment can be properly planned for and addressed.
- 2.3 For the purposes of The Plan the District of Bolton has been divided into a number of spatial elements including:-
- The Town Centre - split into various discrete quarters
  - Renewal Areas – 3 areas
  - Spatial M61 – includes strategic locations for future development
  - Outer Areas – 6 areas
- 2.4 The position of these spatial elements within the District are shown on figure 1 and figure 2.
- 2.5 The rationale behind the selection of these spatial elements can be found in other documents within the overall LDF. Details of the exact nature and type of development that may be allowed in these areas are not yet available. The Core Strategy's intention is to identify the broad type and scale of strategic development and consequently the Assessment has largely considered the *principle* of allowing the Sites to be proposed as areas where development is to be brought forward as part of The Plan. The identification of individual spatial features will be further consulted upon as part of a separate Allocations DPD document.
- 2.6 Figure 3 shows the District of Bolton and its position within Greater Manchester in relation to European sites in the region. No Natura 2000 sites lie within the administrative boundary of Bolton MBC, therefore no direct land take of a European Site is proposed and all parts of the District lie more than 5km away from any protected sites. Where a site lies in closer proximity, this is highlighted in Table 1 below, which lays out each spatial element and its proximity to the nearest Natura 2000 site. The proposal descriptions in Table 1 are summaries of what occurs in the full document, which should be consulted for clarification if required.
- 2.7 The Core Policies of The Plan have also been considered in preparing this Assessment. These are shown in Table 2 along with the potential for effects on Natura sites and the likelihood that an effect will be produced.

**Table 1 Spatial Elements (October 2009)**

	Name	Distance from European Site* (km)	Strategic Proposal
	<b>Town Centre</b>		
<b>TC1</b>	Civic & Retail Core	Over 11	Identified as principal location in borough for civic and retail development. Supports expansion of restaurants, food orientated pubs and financial & professional services. Promotes Victoria Square for leisure activities, outdoor seating for food outlets Gives priority to providing good pedestrian links to Bolton Interchange and car parks.
<b>TC2</b>	St Helena	Over 11	Supports redevelopment of Central Street for retail-led mixed-use development including residential and community uses.
<b>TC3</b>	St Peter's	Over 11	Conserve the historic character of Chruchgate & Wood Street/Silverwell Street. Encourage the existing mix of uses to remain the same
<b>TC4</b>	Trinity Gateway	Over 11	Develop multi-modal transport interchange to replace existing bus station Redevelop mixed uses – new offices, retail & leisure and new car park Promote pedestrian links to remainder of Town Centre Develop new magistrates court in Blackhorse Street Redevelop Westbrook for mixed residential, leisure and non-food retailing
<b>TC5</b>	Cultural Quarter	Over 11	Improvement of Bolton Market Redevelop existing bus station for mix employment, cultural, residential and leisure uses Redevelop older industrial buildings, cleared areas and west side of Moor Lane to incorporate housing uses New car parking
<b>TC6</b>	Knowledge Campus	Over 11	Promote the development of area for main location for post-16 education Construct new road Moor Lane to Blackhorse Street Construct health, leisure & research facilities on University Campus Improve pedestrian access
<b>TC7</b>	Merchant's Quarter	Over 11	Ensure retention of current uses of predominantly employment uses focused on office, business and creative industries Encourage refurbishment of buildings Construct car park Provide new road access and pedestrian footbridges
<b>TC8</b>	Church Wharf	Over 11	Promote employment led mixed used, with residential to east and south



	Name	Distance from European Site* (km)	Strategic Proposal
<b>TC9</b>	Little Bolton	Over 11	Retain existing Conservation Area Take opportunities to refurbish/redevelop mix of residential, office and leisure uses New car park
<b>TC10</b>	Urban Village	Over 11	Increase housing focused on family, affordable, executive types of housing and a range of apartment sizes Use as an example of good practice for environmentally sustainable development Improve Queen's Park and connectivity to surrounding areas Take account of flood risk along River Coral and provide flood storage in Queen's Park
<b>TC11</b>	Design & Built Environment	n/a	This is not a spatial policy and it's potential for effect on European Sites is; it is unlikely to have an effect on a European Site
	<b>Renewal Areas</b>		
<b>RA1</b>	Inner Bolton	Nearest point 8.8	Focus jobs in the employment area of The Valley Locate new employment development in undeveloped sites in The Valley and surroundings Regenerate mills and older industrial premises for employment but also residential & mixed uses Focus local shopping & specialist retail in certain roads Develop new housing on brownfield and in limited Greenfield sites in existing residential areas Redevelop and renew a number of schools Protect open recreational land at Queens Park and existing Green Belt boundaries Protect recreational potential of Manchester, Bolton & Bury Canal Protect & enhance character of built and natural environment Ensure that design and density of new development is sustainable and respects existing features Take opportunities to improve green infrastructure
<b>RA2</b>	Farnworth	Nearest point 7.3	Continue to regenerate with mixed uses Continue to recognise The Royal Bolton Hospital as the main hospital of District Regenerate former mills and other industrial buildings primarily for employment but with residential Protect open recreational areas and Protected Open Land from development Ensure that design and density of new development is sustainable and respects existing features
<b>RA3</b>	Breightmet	Nearest point 10	Develop new housing on brownfield and a limited number of greenfield sites in existing housing area Identify Bolton to Bury railway as cycle route Redevelop educational sites in identified areas Keep Green Belt boundaries unchanged Improve public transport links to housing and employment areas



	Name	Distance from European Site* (km)	Strategic Proposal
	<b>M61 Corridor</b>		
<b>M1</b>	Horwich Loco Works	Approximately 13.5	Site will be developed as strategic site for sustainable mixed use of employment & housing
<b>M2</b>	Horwich Loco Works	Approximately 13.5	Will not result in unacceptable impacts on highway network. New access will be created to south east of site Transport links will be provided between Horwich Town Centre and Middlebrook. Transport will include cycling and walking Provide sustainable power where possible Will respect and enhance adjacent Red Moss SSSI
<b>M3</b>	Junction 4	Approximately 6.0	Site allocation is dependant on regional strategic review of Green Belt and Integrated Regional Strategy
<b>M5</b>	Middlebrook	Approximately 12	Will develop the remaining sites for office development
<b>M6</b>	Lostock Industrial Area	Approximately 12	Remaining sites will be developed for mix of general industrial, light industrial and offices uses
<b>M7</b>	Wingates Industrial Estate	Approximately 9.5	Refurbish and redevelop site for B2 & B8 employment uses
<b>M8</b>	M61	Nearest point 7.3	Ensure that scale & mass of new developments will respect landscape qualities and relate sympathetically to surrounding area
	<b>Outer Areas</b>		
<b>OA1</b>	Horwich & Blackrod	Nearest point 10	Promote Horwich Town Centre for mix of retail, leisure, employment & housing Ensure local centre of Blackrod continues to serve local needs Concentrate new housing in Horwich town centre, Loco Works & urban infill Maintain Green Belt boundaries Ensure Protected Open Land around Horwich & Blackrod remains undeveloped Protect significant recreational areas in West Pennine Moors & Leeds Liverpool Canal Ensure that scale & mass of new developments will respect landscape qualities and relate sympathetically to surrounding area
<b>OA2</b>	Middlebrook Retailing	Approximately 13	Ensure that changes in retailing do not adversely effect Bolton Town Centre
<b>OA3</b>	Westhoughton	Nearest point 6.1	Promote Westhoughton for mix of uses including retail, leisure, employment & housing Concentrate new housing in Town Centre and on infill schemes in urban area Maintain current Green Belt boundaries Protect & enhance physical environment especially Conservation Area Regard is had to landscape character of farm complexes and vernacular cottages

	Name	Distance from European Site* (km)	Strategic Proposal
<b>OA4</b>	West Bolton	Nearest point 5.6	<p>Concentrate housing on infill schemes in existing urban areas</p> <p>Maintain current Green Belt boundaries except around Cutacre site (labelled Broad Location for Employment Uses)</p> <p>Protect and enhance physical character of area including Conservation Areas</p> <p>Ensure that new development respects scale, massing and materials of surrounding area</p> <p>Ensure that new development respects open space and low density developments of area</p>
<b>OA5</b>	North Bolton	Nearest point 12	<p>Concentrate housing on infill schemes in existing urban areas</p> <p>Renew housing in Johnson Fold &amp; Hall l'the'Wood</p> <p>Ensure local district centres serve local needs</p> <p>Maintain current Green Belt boundaries</p> <p>Protect open recreational and tourist locations</p> <p>Protect &amp; enhance physical environment especially Conservation Area</p> <p>Ensure that new developments do not harm landscape setting and open space of area</p>
<b>OA6</b>	Little Lever & Kearsley	Nearest point 7.5	<p>Identify Little Lever Town Centre as serving the area and allow to expand if opportunities are available</p> <p>Ensure other local centres serve local needs</p> <p>Concentrate housing on infill schemes in existing urban areas</p> <p>Maintain current Green Belt boundaries and protect Protected Open Land</p> <p>Protect open recreation and tourist locations</p> <p>Protect and enhance physical character of area including Conservation Areas</p> <p>Ensure that new development respects scale, massing and materials of surrounding area</p>
	<b>Links to Other Areas</b>		
<b>LO1</b>	Bolton wide	Nearest point 6.0	<p>Improve rail links from Bolton</p> <p>Provide off-road cycle routes from Bolton town centre to Bury town centre</p> <p>Development employment areas in Bolton town centre, Horwich Loco Works and Cutacre to provide employment for those living outside borough. These areas are considered in the relevant spatial policies above</p> <p>Protect green infrastructure of sub-regional importance – West Pennine Moors and the Croal Irwell Valley</p> <p>Reduce impact of flooding in downstream areas</p>

**Table 2 Summary Core Policies (October 2009)**

<b>Policy Principle</b>	<b>Potential for Effect</b>	<b>Likely effects of Core Policy</b>
<b>Healthy Bolton</b>		
<b>H1 – Healthy Bolton</b>	Unlikely to have an effect on a European Site	None
<b>Achieving Bolton</b>		
<b>A1 – Achieving Bolton</b>	Unlikely to have an effect on a European Site	None
<b>Prosperous Bolton</b>		
<b>P1 - Employment</b>	Could have a potential negative effect on a European Site	The level of employment provision within Bolton is set by the RSS and therefore should have been considered under the regional HRA.
<b>P2 - Retailing</b>	Unlikely to have an effect on a European Site	None
<b>P3 – Sustainable Waste Management</b>	Could have a potential negative effect on a European Site	Level of impact depends on type and location of waste management facilities proposed. However the Greater Manchester Joint Waste Development Plan Document has been subject to a separate HRA.
<b>P4 - Minerals</b>	Unlikely to have an effect on a European Site	None
<b>P5 - Transport</b>	Unlikely to have an effect on a European Site	Policy is in line with Greater Manchester Transport Plan. Key policies are orientated towards sustainable use and public transport. No major road schemes proposed.
<b>Safe Bolton</b>		
<b>S1 – Safe Bolton</b>	Unlikely to have an effect on a European Site	None
<b>Cleaner, Greener Bolton</b>		
<b>CG1 – Climate Change &amp; Green Infrastructure</b>	Could have a potential positive effect on a European Site	The measures outlined in this Policy could have positive benefits to European sites by virtue of reducing reliance on fossil fuels, reducing flood risk and enhancing biodiversity.
<b>CG2 – Sustainable Design &amp; Construction</b>	Could have a potential positive effect on a European Site	Policy encourages reduction in CO <sub>2</sub> emissions, sustainable surface run-off proposals, renewable/low carbon energy sources & other sustainable design methods
<b>CG3 – The Built Environment</b>	Unlikely to have an effect on a European Site	None
<b>CG4 – Compatible Uses</b>	Could have a potential positive effect on a European Site	Development should not generate unacceptable water, ground or air quality.

Policy Principle	Potential for Effect	Likely effects of Core Policy
<b>Strong &amp; Confident Bolton</b>		
<b>SC1 - Housing</b>	Unlikely to have an effect on a European Site	None – levels are set in Regional Spatial Strategy and is subject to its own HRA and the spatial locations for housing have been considered elsewhere in this document.
<b>SC2 – Community Cohesion</b>	Unlikely to have an effect on a European Site	None
<b>Infrastructure &amp; Planning Contributions</b>		
<b>IPC1 – Planning Contributions</b>	Unlikely to have an effect on a European Site	None

### 3 Identification of European Designated Sites Concerned

- 3.0 This Assessment has first screened European protected sites in the North West of England to decide which of these sites are likely to be affected by development in Bolton (and in particular by development within the spatial elements). When assessing the impact of a Plan on European protected sites it is important to consider the impact on sites not only within the administrative area covered by The Plan but also those which fall outside The Plan boundary, as these could still potentially be affected by The Plan (see figure 3).
- 3.1 As a useful starting point, the Assessment has considered the suite of European sites assessed within the Northwest Regional Spatial Strategy (RSS) Habitat Regulations Assessment. These sites are listed in Appendix 1. This ensures that *all* European sites considered to have the potential to be affected by development within the northwest region can be initially considered for assessment (screened).

#### The Screening Criteria

- 3.2 In carrying out this screening process the Assessment has considered the main possible **sources** of effects on the European sites arising from The Plan, possible **pathways** to the European sites and the effects on possible sensitive **receptors** in the European sites. Only if there is an identifiable source, a pathway and a receptor is there likely to be a significant effect.
- 3.3 Possible sources and pathways for effects arising from development in the identified Sites and used in the screening of European sites are considered to be:
- Water (water pollution and hydrology)
  - Air (air pollution)
  - Direct land-take
  - Habitat/Species Disturbance
  - Increased recreational pressure
- 3.4 Guidance from the Environment Agency (EA) concerning distances at which significant effects on European sites are caused by water or air pollution have been taken into account during the screening of European sites. The EA has set recommended buffer zones for certain types of operation (in particular, waste treatment operations) that are in part applicable to other types of operation. Outside of these buffer zones significant effects on European sites arising from water and air pollution are considered unlikely to arise. The largest (most cautious) buffer zone considered by the EA is 5km; that is, most operations with the potential of causing direct water and/or air pollution impacts located further than 5km from the boundary of a European site are considered very unlikely to have a significant effect on the special interest of that site. Having taken advice DCLG has recognised a 5km buffer in its award of special resources to local authorities for carrying out HRA of Plans; those authorities whose boundaries lie more than 5km away from a European protected sites have not received additional resources to carry out Assessments because it is considered that effects are less likely to arise from development within the boundaries of these authorities.
- 3.5 Although this guidance has been taken into account when screening European protected sites, in the case of a Plan affecting the development of an entire metropolitan area, the 5km buffer zone should be regarded as important but not as definitive – for example, this buffer zone may not be sufficient when assessing certain large-scale developments or secondary impacts. In particular, applying the 5km buffer may not be appropriate where the likely effect on a European site is caused by **diffuse air or water pollution** that may arise from large scale development, or where there are secondary **recreational** pressures

on more distant protected sites arising from increased regional and sub-regional populations.

### Diffuse Air Pollution

3.6 The main types of air pollutants likely to have an adverse effect on an ecological site are:

- Oxides of Nitrogen (NO<sub>x</sub>)
- Ammonia (NH<sub>3</sub>)
- Dust
- Sulphur Dioxide (SO<sub>2</sub>)
- Low level Ozone (O<sub>3</sub>)

*(Scott Wilson Ltd 2007)*

3.7 Of these NO<sub>x</sub> and SO<sub>3</sub> are the most likely to arise as a result of development controlled by the LDF process. The greatest damage caused by these pollutants occurs close to where they are emitted (within 250 m) but an individual source of pollution may add to the general background levels, as pollutants are dispersed by prevailing winds. The main sources of these pollutants are road traffic and industrial processes. Where proposed developments within Bolton are likely to result in these pollutants arising, these have been screened into this Assessment. Where the proposed scale of development has already been assessed at the Regional level, these will be screened out.

### Diffuse Water Pollution

3.8 Effects on distant European sites can occur through increases in water pollution caused by nutrient enrichment and/or industrial processes. Where proposed developments within Bolton are likely to result in this type of diffuse pollution arising and affecting a European site, these have been screened into this Assessment.

3.9 Of the sites considered under Appendix 1, diffuse water pollution could potentially have an effect on either the Mersey Estuary or the Ribble & Alt Estuaries SPA/Ramsar Sites, since the River Croal & River Douglas pass through Bolton and eventually discharge into these Estuaries, respectively. However, prior to discharging into the Estuary these watercourses pass through other Metropolitan areas and conurbations. It would therefore be very difficult to establish whether any water pollution arising from development in Bolton was responsible for a significant effect on pollution in these Estuaries. It is further noted that the HRA for the Regional Spatial Strategy (RSS) did not identify development within Greater Manchester as likely to have a significant effect on these European protected sites and for these reasons, the Mersey Estuary and Ribble & Alt Estuaries have been screened out of this HRA.

3.10 Of the sites considered under Appendix 1, diffuse water pollution could potentially have an effect on the Mersey Estuary SPA/Ramsar Site, since the River Croal passes through Bolton and into the River Mersey, which eventually discharges into the Estuary. However, prior to discharging into the Estuary these watercourses pass through other Metropolitan areas, and the Estuary itself is adjacent to the Merseyside conurbation. It would therefore be very difficult to establish whether any water pollution arising from development in Bolton was responsible for a significant effect on pollution in the Estuary. It is further noted that the HRA for the Regional Spatial Strategy (RSS) did not identify development within Greater Manchester as likely to have a significant effect on this European protected site and for these reasons, the Mersey Estuary has been screened out of this HRA.

### Recreational Pressure

3.11 The effects of increased regional and sub-regional populations on recreational pressures on the north west's European protected sites has been considered in the HRA of the North West RSS and is therefore not considered in detail in this report. Since there are no

protected sites within Bolton it is generally considered that any recreational pressures arising from development within Bolton on protected sites will be diffuse and not significant.

- 3.12 The detailed results of the site screening process are found in Appendices 1 and 2 of this document. Appendix 1 shows the likely effects of the possible pathway and sources, outlined above, of future development in Bolton on these European Sites. Appendix 2 summarises the results of this screening process. The outcomes of the site screening process are given below.

### **Summary Results of Screening of Sites**

- 3.13 From the screening process detailed in Appendix 1 and 2 no European designated sites have been identified as having the potential to be affected by development within the selected administrative boundary of Bolton.



## **4 Summary of the Screening Opinion – Bolton Core Strategy (Publication Document)**

- 4.0 The Screening Opinion of the HRA has concluded that neither the spatial elements of The Plan nor its Core Policies are likely to have a significant effect on the special interest of the European sites considered in this Site Screening exercise.

## **5 Consideration of 'In Combination' Effects with Other Plans and Proposals**

- 5.0 The Habitats Regulation Assessment must consider the likely significant effect of The Plan in relation to other proposals and plans - current or planned - within the relevant administrative area, other administrative authorities and prepared by other statutory organisations (e.g. Environment Agency, United Utilities) and in combination with the identified effects of those Plans.
- 5.1 It can be considered that this will fall into two categories: those effects associated with regional strategic plans and proposals and those related to more localised 'in combination' effects, either with adjacent Authorities or geographically localised plans from other statutory agencies.
- 5.2 The North West Regional Spatial Strategy has considered the 'in combination' effects of the Region's Projects and Plans at a strategic level (Entec January 2007) and therefore such regionally strategic plans are not considered further in this Assessment.
- 5.3 As regards the emerging Core Strategies and other Development Plan Documents of neighbouring Greater Manchester authorities, those ready for initial Assessment have been screened by GMEU. These are listed in Appendix 4. One, Oldham, has been assessed as potentially having an effect on a European site. However, the European Site in question is the Rochdale Canal, which has been screened out of this Assessment. Salford City Council's and Trafford Borough's LDFs also have the potential to have a significant effect on the Manchester Mosses SAC. However, the Manchester Mosses SAC has been screened out of this Assessment.
- 5.4 At this stage it is therefore considered that there will be no identifiable in combination effects with Bolton's Core Strategy (Publication Document).
- 5.5 This Assessment will be updated and amended as necessary as further Plans come forward for Assessment in order to take into account possible 'in combination' effects arising at a later stage.

## 6 Summary and Recommendations

- 6.0 The Screening Assessment for Bolton's Core Strategy (Publication Document) has identified no European sites to be screened into the Assessment. It has concluded that there are no likely significant effects on any European Site by either the spatial elements of The Plan or the Core Policies as presented.
- 6.1 No HRA Stage 2 Appropriate Assessment is therefore required for any plans or Policies contained within the Core Strategy (Publication Document).
- 6.2 It is **recommended** that if any changes are made to the boundaries of any of the spatial elements or to the type of development that may be preferred in these areas, the allocations should be considered for further Assessment under the terms of the HRA. However, given the spatial separation of Bolton from the nearest SAC and lack of pathways to other sites, it is thought that a further full iteration of this document will be unnecessary.
- 6.3 It is **recommend** that any transport infrastructure schemes (Policy P5) that could potentially have a negative effect on the European Site be referred for possible HRA as part of the development management process. As a preliminary guide, proposals within 5km of Manchester Mosses SAC should be considered. All other European sites are greater than 10km from the District's boundary.



Figure 1: Bolton's Spatial Elements – Town Centre, Renewal Areas & Outer Areas

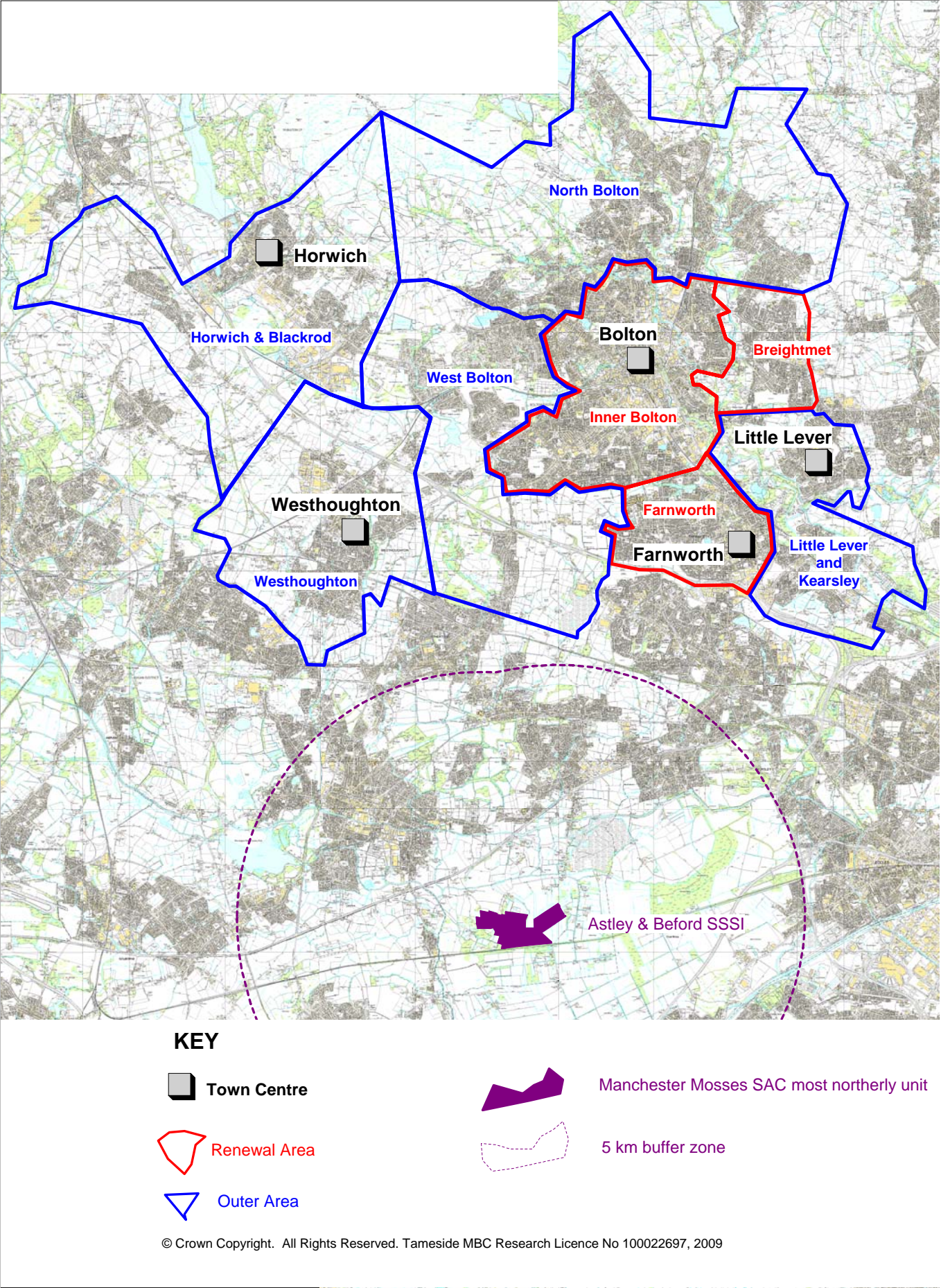




Figure 2: Bolton's Spatial Elements – Spatial M61

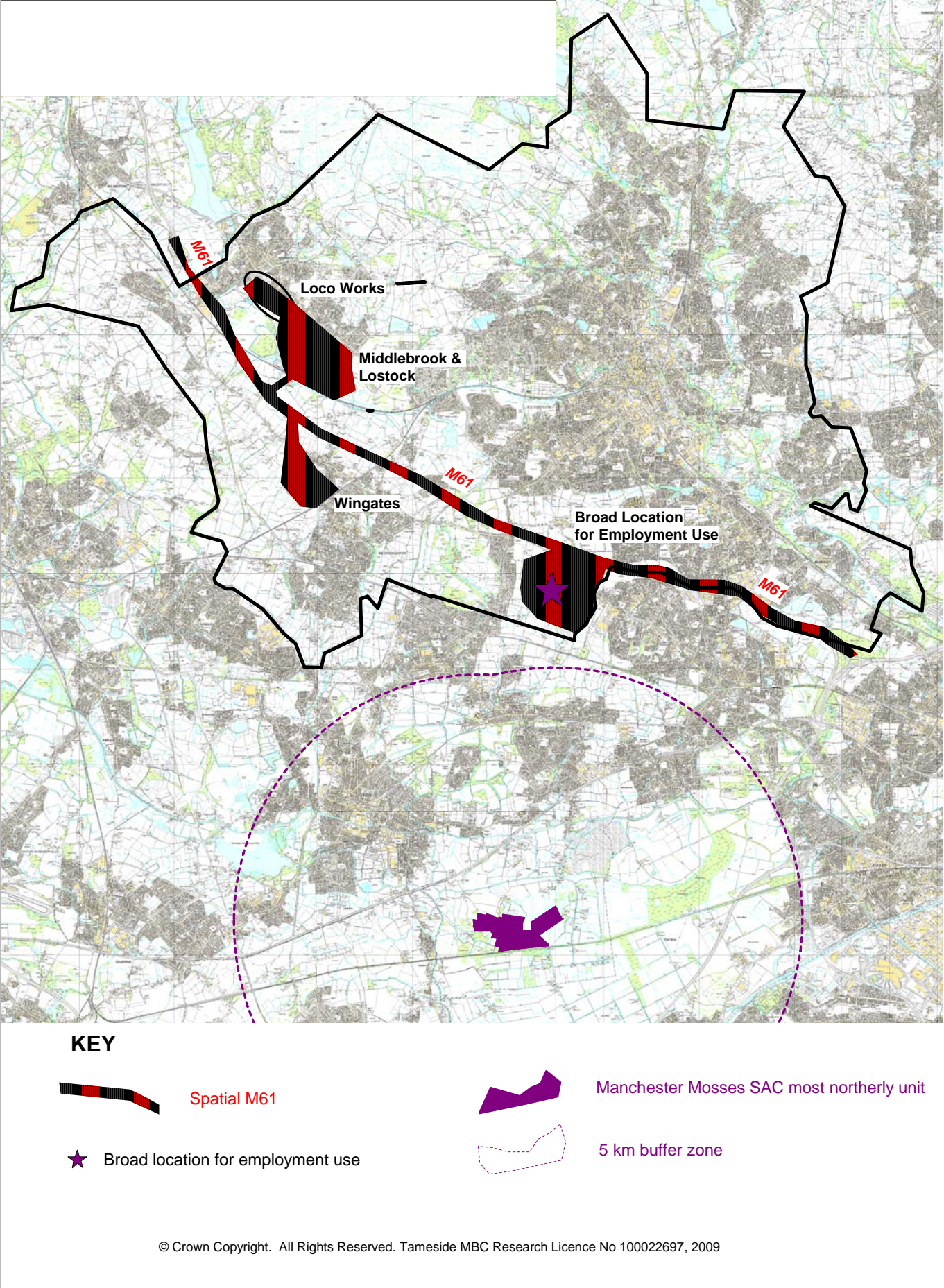
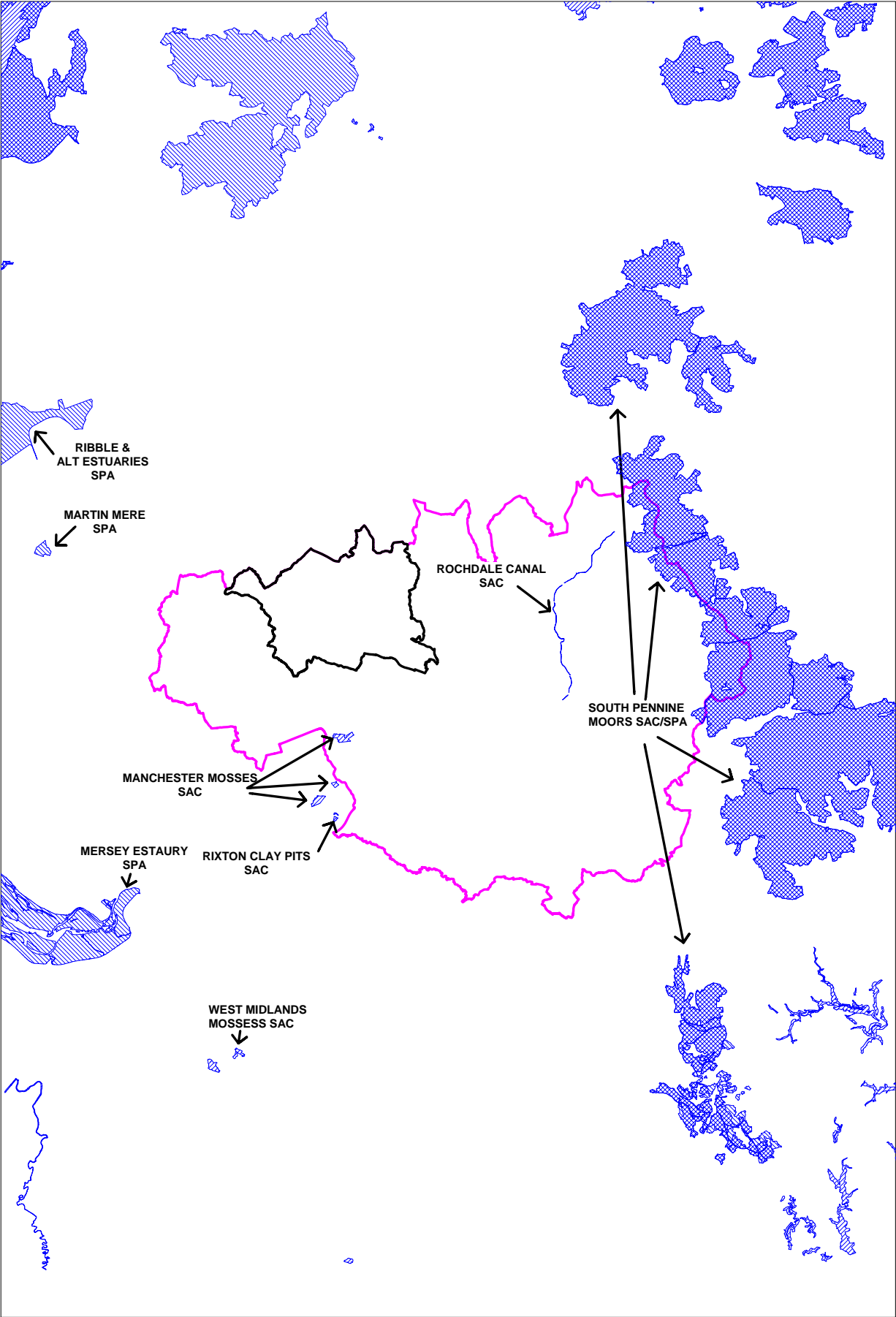


Figure 3 – Map Showing Location of European Sites within Greater Manchester and in Close Proximity to the County (edged pink) and Bolton (edged black)





## REFERENCES

DCLG (2006) Department for Communities and Local Government. *Planning for the protection of European Sites: Appropriate Assessment*. Available on-line from DCLG

EC (1992) European Council. *Council Directive 92/43/EEC on the conservation of natural habitats and of wild flora and fauna* Available on-line from EU

ENTEC (2007) *Habitats Regulations Assessment of the North West Regional Spatial Strategy*. NWRA web site.

JNCC (2006) Joint Nature Conservation Committee *Rochdale Canal standard Natura 2000 data form* Available on-line from JNCC

JNCC (2006) Joint Nature Conservation Committee *South Pennine Moors standard Natura 2000 data form* Available on-line from JNCC

North West Regional Assembly (2008) *Adopted North West Regional Spatial Strategy*

Scott Wilson et al 2006. Scott Wilson, levett-Therivel, Treweek Environmental Consultants and Land Use Consultants *Appropriate Assessment of Plans*. Available from <http://levett-therivel.fsworld.co.uk>

Scott Wilson (2007). *AA of St. Helens Core Strategy Preferred Options DPD* (Draft)

Scott Wilson 2008, *HRA Screening Assessment of the Greater Manchester Joint Waste Development Plan Document* (draft report)

Conservation (Natural Habitats &c) (Amendment) Regulations 1997

Natural England (2007) *Conservation Objectives: Astley & Bedford Moss – Consultation Draft*. Available from Natural England



## APPENDIX 1: European designated sites within the North West Region and possible effects from development within Bolton MBC

Site Name	Designation	Type of Effect	Likely Effects
Asby Complex	SAC	Water Quality/Hydrology	None - No hydrological pathways between SAC and land within Bolton
		Air Pollution	None – No atmospheric pathways and any pollutants are likely to have dispersed prior to reaching SAC (see EA report).
		Direct land take	None
		Habitat/Species Disturbance	None – Site too distant for any direction disturbance to habitats.
		Increased recreational Pressure	None – site is too distant and numerous recreational facilities closer to Bolton
Border Mires, Kielder – Butterburn	SAC	Water Quality/Hydrology	None - No hydrological pathways between SAC and land within Bolton
		Air Pollution	None – No atmospheric pathways and any pollutants are likely to have dispersed prior to reaching SAC (see EA report).
		Direct land take	None
		Habitat/Species Disturbance	None – Site too distant for any direction disturbance to habitats.
		Increased recreational Pressure	None – site is too distant and numerous recreational facilities closer to Bolton
Borrowdale Woodland Complex	SAC	Water Quality/Hydrology	None - No hydrological pathways between SAC and land within Bolton
		Air Pollution	None – No atmospheric pathways and any pollutants are likely to have dispersed prior to reaching SAC (see EA report).
		Direct land take	None
		Habitat/Species Disturbance	None – Site too distant for any direct or indirect disturbance to habitats.
		Increased recreational Pressure	None – site is too distant and numerous recreational facilities closer to Bolton
Bowland Fells	SPA	Water Quality/Hydrology	None - No hydrological pathways between SPA and land within Bolton
		Air Pollution	None – No atmospheric pathways and any pollutants are likely to have dispersed prior to reaching SPA (see EA report).
		Direct land take	None
		Habitat/Species Disturbance	None – identified species are highly unlikely to utilise habitats within Bolton
		Increased recreational Pressure	None – site is too distant and numerous recreational facilities closer to Bolton

Site Name	Designation	Type of Effect	Likely Effects
Calf Hill & Cragg Woods	SAC	Water Quality/Hydrology	None - No hydrological pathways between SAC and land within Bolton
		Air Pollution	None – No atmospheric pathways and any pollutants are likely to have dispersed prior to reaching SAC (see EA report).
		Direct land take	None
		Habitat/Species Disturbance	None – Site too distant for any direct or indirect disturbance to habitats.
		Increased recreational Pressure	None – site is too distant and numerous recreational facilities closer to Bolton
Clints Quarry	SAC	Water Quality/Hydrology	None - No hydrological pathways between SAC and land within Bolton
		Air Pollution	None – No atmospheric pathways and any pollutants are likely to have dispersed prior to reaching SAC (see EA report).
		Direct land take	None
		Habitat/Species Disturbance	None - Species population too distant to be affected by any development with Greater Manchester and species dispersion known to be less than 2km.
		Increased recreational Pressure	None – site is too distant and numerous recreational facilities closer to Bolton
Cumbrian Marsh Fritillary Site	SAC	Water Quality/Hydrology	None - No hydrological pathways between SAC and land within Bolton
		Air Pollution	None – No atmospheric pathways and any pollutants are likely to have dispersed prior to reaching SAC (see EA report).
		Direct land take	None
		Habitat/Species Disturbance	None - Species found in Cumbria is distinct national population, with adults being sedentary. Species not known to occur in Greater Manchester
		Increased recreational Pressure	None – site is too distant and numerous recreational facilities closer to Bolton
Dee Estuary	SPA/Ramsar	Water Quality/Hydrology	None - No hydrological pathways between SPA and land within Bolton
		Air Pollution	None – No atmospheric pathways and any pollutants are likely to have dispersed prior to reaching SPA (see EA report).
		Direct land take	None
		Habitat/Species Disturbance	None – species identified highly unlikely to be effected by any habitat changes in Bolton
		Increased recreational Pressure	None – site is too distant and numerous recreational facilities closer to Bolton

Site Name	Designation	Type of Effect	Likely Effects
Drigg Coast	SAC	Water Quality/Hydrology	None - No hydrological pathways between SAC and land within Bolton. Bolton rivers do not discharge into Drigg Estuary
		Air Pollution	None – No atmospheric pathways and any pollutants are likely to have dispersed prior to reaching SAC (see EA report).
		Direct land take	None
		Habitat/Species Disturbance	None – Habitats in SAC are restricted to habitat types that do not occur in Greater Manchester
		Increased recreational Pressure	None – site is too distant and numerous recreational facilities closer to Bolton
Duddon Estuary	SPA/Ramsar	Water Quality/Hydrology	None - No hydrological pathways between SAC and land within Bolton
		Air Pollution	None – No atmospheric pathways and any pollutants are likely to have dispersed prior to reaching SPA (see EA report).
		Direct land take	None
		Habitat/Species Disturbance	None – species identified highly unlikely to be effected by any habitat changes in Bolton
		Increased recreational Pressure	None – site is too distant and numerous recreational facilities closer to Bolton
Duddon Mosses	SAC	Water Quality/Hydrology	None - No hydrological pathways between SAC and land within Bolton
		Air Pollution	None – No atmospheric pathways and any pollutants are likely to have dispersed prior to reaching SPA (see EA report).
		Direct land take	None
		Habitat/Species Disturbance	None – Site too distant for any direct or indirect disturbance to habitats.
		Increased recreational Pressure	None – site is too distant and numerous recreational facilities closer to Bolton
Esthwaite Water	Ramsar	Water Quality/Hydrology	None - No hydrological pathways between Ramsar site and land within Bolton
		Air Pollution	None – No atmospheric pathways and any pollutants are likely to have dispersed prior to reaching Ramsar site (see EA report).
		Direct land take	None
		Habitat/Species Disturbance	None – habitats and species identified highly unlikely to be effected by any habitat changes in Bolton
		Increased recreational Pressure	None – site is too distant and numerous recreational facilities closer to Bolton

Site Name	Designation	Type of Effect	Likely Effects
Irthinghead Mires	Ramsar	Water Quality/Hydrology	None - No hydrological pathways between Ramsar site and land within Bolton
		Air Pollution	None – No atmospheric pathways and any pollutants are likely to have dispersed prior to reaching Ramsar site (see EA report).
		Direct land take	None
		Habitat/Species Disturbance	None – habitats and species identified highly unlikely to be effected by any habitat changes in Bolton
		Increased recreational Pressure	None – site is too distant and numerous recreational facilities closer to Bolton
Lake District High Fells	SAC	Water Quality/Hydrology	None - No hydrological pathways between SAC and land within Bolton
		Air Pollution	None – No atmospheric pathways and any pollutants are likely to have dispersed prior to reaching SAC (see EA report).
		Direct land take	None
		Habitat/Species Disturbance	None – Site too distant for any direct or indirect disturbance to habitats or species
		Increased recreational Pressure	None – site is too distant and numerous recreational facilities closer to Bolton
Leighton Moss	SPA/Ramsar	Water Quality/Hydrology	None - No hydrological pathways between SPA/Ramsar Site and land within Bolton
		Air Pollution	None – No atmospheric pathways and any pollutants are likely to have dispersed prior to reaching SPA and Ramsar Site (see EA report).
		Direct land take	None
		Habitat/Species Disturbance	None – Habitats and species identified highly unlikely to be effected by any habitat changes in Bolton
		Increased recreational Pressure	None – site is too distant and numerous recreational facilities closer to Bolton
Liverpool Bay	pSPA	Water Quality/Hydrology	None - No hydrological pathways between SPA and land within Bolton
		Air Pollution	None – No atmospheric pathways and any pollutants are likely to have dispersed prior to reaching SPA (see EA report).
		Direct land take	None
		Habitat/Species Disturbance	None – no information available as to species site selected for but type of species present highly unlikely to be effected by any habitat changes in Bolton (based on knowledge of Greater Manchester bird populations)
		Increased recreational Pressure	None – site is too distant and numerous recreational facilities closer to Bolton

Site Name	Designation	Type of Effect	Likely Effects
Manchester Mosses	SAC	Water Quality/Hydrology	None - No hydrological pathways between SPA/Ramsar Site and land within Bolton
		Air Pollution	None – No atmospheric pathways and any pollutants are likely to have dispersed prior to reaching SPA/Ramsar Site (see EA report).
		Direct land take	None
		Habitat/Species Disturbance	None – Habitats and species identified highly unlikely to be effected by any habitat changes in Bolton
		Increased recreational Pressure	None – site is too distant and numerous recreational facilities closer to Bolton
Martin Mere	SPA/Ramsar	Water Quality/Hydrology	None - No hydrological pathways between SPA/Ramsar Site and land within Bolton
		Air Pollution	None – No atmospheric pathways and any pollutants are likely to have dispersed prior to reaching SPA/Ramsar Site (see EA report).
		Direct land take	None
		Habitat/Species Disturbance	None – Habitats and species identified highly unlikely to be effected by any habitat changes in Bolton
		Increased recreational Pressure	None – site is too distant and numerous recreational facilities closer to Bolton
Mersey Estuary	SPA/Ramsar	Water Quality/Hydrology	None - Strategic impacts of increased development in Bolton on the water quality in the SPA/Ramsar Site are considered under the HRA for RSS, where figures for employment land and residential development are set.
		Air Pollution	None – No atmospheric pathways and any pollutants are likely to have dispersed prior to reaching SPA/Ramsar Site (see EA report).
		Direct land take	None
		Habitat/Species Disturbance	None – Habitats and species identified highly unlikely to be significantly effected by any habitat changes in Bolton
		Increased recreational Pressure	None – site is too distant and numerous recreational facilities closer to Bolton

Site Name	Designation	Type of Effect	Likely Effects
Mersey Narrows & Wirral Foreshore	pSPA	Water Quality/Hydrology	Site classification details unavailable but there are unlikely to be any hydrological pathways between SPA and land within Bolton
		Air Pollution	Site classification details unavailable but there are unlikely to be any atmospheric pathways between SPA and land within Bolton
		Direct land take	None
		Habitat/Species Disturbance	None – no information available as to species site selected for but type of species present highly unlikely to be effected by any habitat changes in Bolton (based on knowledge of Greater Manchester bird populations).
		Increased recreational Pressure	None – site is too distant and numerous recreational facilities closer to Bolton
Midland Meres & Mosses – Phase 1 & Phase 2	2 x Ramsar	Water Quality/Hydrology	None - No hydrological pathways between Ramsar site and land within Bolton
		Air Pollution	None – No atmospheric pathways and any pollutants are likely to have dispersed prior to reaching Ramsar site (see EA report).
		Direct land take	None
		Habitat/Species Disturbance	None – habitats and species identified highly unlikely to be effected by any habitat changes in Bolton
		Increased recreational Pressure	None – site is too distant and numerous recreational facilities closer to Bolton
Moor House – Upper Teasdale	SAC	Water Quality/Hydrology	None - No hydrological pathways between SAC and land within Bolton
		Air Pollution	None – No atmospheric pathways and any pollutants are likely to have dispersed prior to reaching SAC (see EA report).
		Direct land take	None
		Habitat/Species Disturbance	None – Site too distant for any direct or indirect disturbance to habitats and species.
		Increased recreational Pressure	None – site is too distant and numerous recreational facilities closer to Bolton

Site Name	Designation	Type of Effect	Likely Effects
Morcombe Bay	SAC/Ramsar/SPA	Water Quality/Hydrology	None - No hydrological pathways between SAC/SPA/Ramsar Site and land within Bolton. Bolton rivers do not discharge into Morcombe Bay
		Air Pollution	None – No atmospheric pathways and any pollutants are likely to have dispersed prior to reaching SAC/SPA/Ramsar Site (see EA report).
		Direct land take	None
		Habitat/Species Disturbance	None – Habitats in SAC/SPA/Ramsar Site are restricted to habitat types that do not occur in Greater Manchester. Dispersion of Great Crested Newts is known to be less than 2km. Bird species unlikely to be effected by habitat changes within Bolton.
		Increased recreational Pressure	None – site is too distant and numerous recreational facilities closer to Bolton
Morecombe Bay Pavements	SAC	Water Quality/Hydrology	None - No hydrological pathways between SAC and land within Bolton
		Air Pollution	None – No atmospheric pathways and any pollutants are likely to have dispersed prior to reaching SAC (see EA report).
		Direct land take	None
		Habitat/Species Disturbance	None – Habitats and species in SAC are generally restricted to habitat types that do not occur in Greater Manchester
		Increased recreational Pressure	None – site is too distant and numerous recreational facilities closer to Bolton
Naddle Forest	SAC	Water Quality/Hydrology	None - No hydrological pathways between SAC and land within Bolton
		Air Pollution	None – No atmospheric pathways and any pollutants are likely to have dispersed prior to reaching SAC (see EA report).
		Direct land take	None
		Habitat/Species Disturbance	None – Site too distant for any direct or indirect disturbance to habitats.
		Increased recreational Pressure	None – site is too distant and numerous recreational facilities closer to Bolton



Site Name	Designation	Type of Effect	Likely Effects
North Pennine Dales Meadows	SAC	Water Quality/Hydrology	None - No hydrological pathways between SAC and land within Bolton
		Air Pollution	None – No atmospheric pathways and any pollutants are likely to have dispersed prior to reaching SAC (see EA report).
		Direct land take	None
		Habitat/Species Disturbance	None – Site too distant for any direct or indirect disturbance to habitats and species. Habitats in SAC are generally restricted to habitat types that do not occur in Greater Manchester
		Increased recreational Pressure	None – site is too distant and numerous recreational facilities closer to Bolton
North Pennine Moors	SAC/SPA	Water Quality/Hydrology	None - No hydrological pathways between SAC/SPA and land within Bolton
		Air Pollution	None – No atmospheric pathways and any pollutants are likely to have dispersed prior to reaching SAC/SPA (see EA report).
		Direct land take	None
		Habitat/Species Disturbance	None – Site too distant for any direct or indirect disturbance to habitats and species. Species unlikely to be effected by changes to habitats in Bolton.
		Increased recreational Pressure	None – site is too distant and numerous recreational facilities closer to Bolton
Oak Mere	SAC	Water Quality/Hydrology	None - No hydrological pathways between SAC and land within Bolton
		Air Pollution	None – No atmospheric pathways and any pollutants are likely to have dispersed prior to reaching SAC (see EA report).
		Direct land take	None
		Habitat/Species Disturbance	None – Site too distant from for any direct or indirect disturbance to habitats and species.
		Increased recreational Pressure	None – site is too distant and numerous recreational facilities closer to Bolton
Peak District Moors (South Pennine Moors Phase 1)	SPA	Water Quality/Hydrology	None - No hydrological pathways between SPA and land within Bolton
		Air Pollution	None – Any pollutants are likely to have dispersed prior to reaching SPA (see EA report).
		Direct land take	None
		Habitat/Species Disturbance	None – species identified highly unlikely to be effected by any habitat changes in Bolton
		Increased recreational Pressure	None – site is too distant and numerous recreational facilities closer to Bolton

Site Name	Designation	Type of Effect	Likely Effects
Ribble & Alt Estuaries	SPA/Ramsar	Water Quality/Hydrology	None - No hydrological pathways between SPA/Ramsar Site and land within Bolton
		Air Pollution	None – No atmospheric pathways and any pollutants are likely to have dispersed prior to reaching SPA/Ramsar Site (see EA report).
		Direct land take	None
		Habitat/Species Disturbance	None – habitats and species identified highly unlikely to be effected by any habitat changes in Bolton
		Increased recreational Pressure	None – site is too distant and numerous recreational facilities closer to Bolton
River Dee & Bala Lake	SAC	Water Quality/Hydrology	None - No hydrological pathways between SAC and land within Bolton
		Air Pollution	None – No atmospheric pathways and any pollutants are likely to have dispersed prior to reaching SAC (see EA report).
		Direct land take	None
		Habitat/Species Disturbance	None – Site too distant for any direct or indirect disturbance to habitats and species.
		Increased recreational Pressure	None – site is too distant and numerous recreational facilities closer to Bolton
River Derwent & Bassenthwaite Lake	SAC	Water Quality/Hydrology	None – no water borne pollution pathways to SAC from Greater Manchester. Strategic impacts of increased development in Bolton on the water levels in the SAC are considered under the HRA for RSS, where figures for employment land and residential development are set.
		Air Pollution	None – No atmospheric pathways and any pollutants are likely to have dispersed prior to reaching SAC (see EA report).
		Direct land take	None
		Habitat/Species Disturbance	None – Site too distant for any direct or indirect disturbance to habitats and species.
		Increased recreational Pressure	None – site is too distant and numerous recreational facilities closer to Bolton

Site Name	Designation	Type of Effect	Likely Effects
River Eden	SAC	Water Quality/Hydrology	None - No hydrological pathways between SAC and land within Bolton
		Air Pollution	None – No atmospheric pathways and any pollutants are likely to have dispersed prior to reaching SAC (see EA report).
		Direct land take	None
		Habitat/Species Disturbance	None – Site too distant for any direct or indirect disturbance to habitats and species.
		Increased recreational Pressure	None – site is too distant and numerous recreational facilities closer to Bolton
River Eden	SAC	Water Quality/Hydrology	None - No hydrological pathways between SAC and land within Bolton
		Air Pollution	None – No atmospheric pathways and any pollutants are likely to have dispersed prior to reaching SAC (see EA report).
		Direct land take	None
		Habitat/Species Disturbance	None - No hydrological connections and main species (fresh water pearl mussel) does not occur in Greater Manchester
		Increased recreational Pressure	None – site is too distant and numerous recreational facilities closer to Bolton
River Kent	SAC	Water Quality/Hydrology	None - No hydrological pathways between SAC and land within Bolton
		Air Pollution	None – No atmospheric pathways and any pollutants are likely to have dispersed prior to reaching SAC (see EA report).
		Direct land take	None
		Habitat/Species Disturbance	None – Site too distant for any direct or indirect disturbance to habitats and species.
		Increased recreational Pressure	None – site is too distant and numerous recreational facilities closer to Bolton
Rixton Clay Pits	SAC	Water Quality/Hydrology	None - No hydrological pathways between SAC and land within Bolton
		Air Pollution	None – No atmospheric pathways and any pollutants are likely to have dispersed prior to reaching SAC (see EA report).
		Direct land take	None
		Habitat/Species Disturbance	None – Site too distant for any direct or indirect disturbance to habitats and species.
		Increased recreational Pressure	None – site is too distant and numerous recreational facilities closer to Bolton

Site Name	Designation	Type of Effect	Likely Effects
Rochdale Canal	SAC	Water Quality/Hydrology	None - No hydrological pathways between SAC and land within Bolton
		Air Pollution	None – No atmospheric pathways and any pollutants are likely to have dispersed prior to reaching SAC (see EA report).
		Direct land take	None
		Habitat/Species Disturbance	None – Site too distant for any direct or indirect disturbance to habitats and species.
		Increased recreational Pressure	None – site is too distant and numerous recreational facilities closer to Bolton
Rostherne Mere	Ramsar	Water Quality/Hydrology	None - No hydrological pathways between Ramsar site and land within Bolton
		Air Pollution	None – No atmospheric pathways and any pollutants are likely to have dispersed prior to reaching Ramsar site (see EA report).
		Direct land take	None
		Habitat/Species Disturbance	None – habitats and species identified highly unlikely to be effected by any habitat changes in Bolton
		Increased recreational Pressure	None – site is too distant and numerous recreational facilities closer to Bolton
Roudsea Wood & Mosses	SAC	Water Quality/Hydrology	None - No hydrological pathways between SAC and land within Bolton
		Air Pollution	None – No atmospheric pathways and any pollutants are likely to have dispersed prior to reaching SAC (see EA report).
		Direct land take	None
		Habitat/Species Disturbance	None – Site too distant for any direct or indirect disturbance to habitats and species.
		Increased recreational Pressure	None – site is too distant and numerous recreational facilities closer to Bolton

Site Name	Designation	Type of Effect	Likely Effects
Sefton Coast	SAC	Water Quality/Hydrology	None - No hydrological pathways between SAC and land within Bolton
		Air Pollution	None – No atmospheric pathways and any pollutants are likely to have dispersed prior to reaching SAC (see EA report).
		Direct land take	None
		Habitat/Species Disturbance	None – Site too distant for any direct or indirect disturbance to habitats and species. Habitat types do not occur in Greater Manchester
		Increased recreational Pressure	None – site is too distant and numerous recreational facilities closer to Bolton
Solway Firth	SAC	Water Quality/Hydrology	None - No hydrological pathways between SAC and land within Bolton
		Air Pollution	None – No atmospheric pathways and any pollutants are likely to have dispersed prior to reaching SAC (see EA report).
		Direct land take	None
		Habitat/Species Disturbance	None – Site too distant for any direct or indirect disturbance to habitats and species.
		Increased recreational Pressure	None – site is too distant and numerous recreational facilities closer to Bolton
South Pennine Moors	SAC	Water Quality/Hydrology	None – hydrological impact pathways are in reverse direction.
		Air Pollution	None – Any pollutants are likely to have dispersed prior to reaching SAC (see EA report).
		Direct land take	None
		Habitat/Species Disturbance	None – Site too distant for any direct or indirect disturbance to habitats and species.
		Increased recreational Pressure	None – site is too distant and numerous recreational facilities closer to Bolton
South Pennine Moors Phase 2	SPA	Water Quality/Hydrology	None - No hydrological pathways between SPA and land within Bolton
		Air Pollution	None – Any pollutants are likely to have dispersed prior to reaching SPA (see EA report).
		Direct land take	None
		Habitat/Species Disturbance	None – species identified highly unlikely to be effected by any habitat changes in Bolton
		Increased recreational Pressure	None – site is too distant and numerous recreational facilities closer to Bolton

Site Name	Designation	Type of Effect	Likely Effects
South Solway Mosses	SAC	Water Quality/Hydrology	None - No hydrological pathways between SAC and land within Bolton
		Air Pollution	None – No atmospheric pathways and any pollutants are likely to have dispersed prior to reaching SAC (see EA report).
		Direct land take	None
		Habitat/Species Disturbance	None – Site too distant for any direct or indirect disturbance to habitats and species.
		Increased recreational Pressure	None – site is too distant and numerous recreational facilities closer to Bolton
Subberthwaite, Blawith & Torver Low Commons	SAC	Water Quality/Hydrology	None - No hydrological pathways between SAC and land within Bolton
		Air Pollution	None – No atmospheric pathways and any pollutants are likely to have dispersed prior to reaching SAC (see EA report).
		Direct land take	None
		Habitat/Species Disturbance	None – Site too distant for any direct or indirect disturbance to habitats and species.
		Increased recreational Pressure	None – site is too distant and numerous recreational facilities closer to Bolton
Tarn Moss	SAC	Water Quality/Hydrology	None - No hydrological pathways between SAC and land within Bolton
		Air Pollution	None – No atmospheric pathways and any pollutants are likely to have dispersed prior to reaching SAC (see EA report).
		Direct land take	None
		Habitat/Species Disturbance	None – Site too distant for any direct or indirect disturbance to habitats and species.
		Increased recreational Pressure	None – site is too distant and numerous recreational facilities closer to Bolton
Tyne & Nent	SAC	Water Quality/Hydrology	None - No hydrological pathways between SAC and land within Bolton
		Air Pollution	None – No atmospheric pathways and any pollutants are likely to have dispersed prior to reaching SAC (see EA report).
		Direct land take	None
		Habitat/Species Disturbance	None – Site too distant for any direct or indirect disturbance to habitats. Habitat not found in Greater Manchester
		Increased recreational Pressure	None – site is too distant and numerous recreational facilities closer to Bolton

Site Name	Designation	Type of Effect	Likely Effects
Ullswater Oakwoods	SAC	Water Quality/Hydrology	None - No hydrological pathways between SAC and land within Bolton
		Air Pollution	None – No atmospheric pathways and any pollutants are likely to have dispersed prior to reaching SAC (see EA report).
		Direct land take	None
		Habitat/Species Disturbance	None – Site too distant for any direct or indirect disturbance to habitats.
		Increased recreational Pressure	None – site is too distant and numerous recreational facilities closer to Bolton
Upper Solway Flats & Marshes	SPA/Ramsar	Water Quality/Hydrology	None - No hydrological pathways between SPA/Ramsar Site and land within Bolton
		Air Pollution	None – No atmospheric pathways and any pollutants are likely to have dispersed prior to reaching SPA/Ramsar Site (see EA report).
		Direct land take	None
		Habitat/Species Disturbance	None – species identified highly unlikely to be effected by any habitat changes in Bolton
		Increased recreational Pressure	None – site is too distant and numerous recreational facilities closer to Bolton
Walton Moss	SAC	Water Quality/Hydrology	None - No hydrological pathways between SAC and land within Bolton
		Air Pollution	None – No atmospheric pathways and any pollutants are likely to have dispersed prior to reaching SAC (see EA report).
		Direct land take	None
		Habitat/Species Disturbance	None – Site too distant for any direct or indirect disturbance to habitats.
		Increased recreational Pressure	None – site is too distant and numerous recreational facilities closer to Bolton
Wast Water	SAC	Water Quality/Hydrology	None - No hydrological pathways between SAC and land within Bolton
		Air Pollution	None – No atmospheric pathways and any pollutants are likely to have dispersed prior to reaching SAC (see EA report).
		Direct land take	None
		Habitat/Species Disturbance	None – Site too distant for any direct or indirect disturbance to habitat. Habitat does not occur in Greater Manchester
		Increased recreational Pressure	None – site is too distant and numerous recreational facilities closer to Bolton



Site Name	Designation	Type of Effect	Likely Effects
West Midlands Mosses	SAC	Water Quality/Hydrology	None - No hydrological pathways between SAC and land within Bolton
		Air Pollution	None – No atmospheric pathways and any pollutants are likely to have dispersed prior to reaching SAC (see EA report).
		Direct land take	None
		Habitat/Species Disturbance	None – Site too distant for any direct or indirect disturbance to habitats and species.
		Increased recreational Pressure	None – site is too distant and numerous recreational facilities closer to Bolton
Witherslack Mosses	SAC	Water Quality/Hydrology	None - No hydrological pathways between SAC and land within Bolton
		Air Pollution	None – No atmospheric pathways and any pollutants are likely to have dispersed prior to reaching SAC (see EA report).
		Direct land take	None
		Habitat/Species Disturbance	None – Site too distant for any direct or indirect disturbance to habitats and species.
		Increased recreational Pressure	None – site is too distant and numerous recreational facilities closer to Bolton
Yewbarrow Woods	SAC	Water Quality/Hydrology	None - No hydrological pathways between SAC and land within Bolton
		Air Pollution	None – No atmospheric pathways and any pollutants are likely to have dispersed prior to reaching SAC (see EA report).
		Direct land take	None
		Habitat/Species Disturbance	None – Site too distant for any direct or indirect disturbance to habitats and species.
		Increased recreational Pressure	None – site is too distant and numerous recreational facilities closer to Bolton

## APPENDIX 2: Screening Summary of European designated sites within the North West Region and possible impacts from development within Bolton MBC

Site Name	Designation	Screened in/out	Justification
Asby Complex	SAC	Out	Site considered too distant for significant effects to arise and no strategic impacts or pathways identified in RSS HRA
Border Mires, Kielder – Butterburn	SAC	Out	Site considered too distant for significant effects to arise and no strategic impacts or pathways identified in RSS HRA
Borrowdale Woodland Complex	SAC	Out	Site considered too distant for significant effects to arise and no strategic impacts or pathways identified in RSS HRA
Bowland Fells	SPA	Out	Site considered too distant for significant effects to arise and strategic impacts considered by RSS HRA
Calf Hill & Cragg Woods	SAC	Out	Site considered too distant for significant effects to arise and no strategic impacts or pathways identified in RSS HRA
Clints Quarry	SAC	Out	Site considered too distant for significant effects to arise and no strategic impacts or pathways identified in RSS HRA
Cumbrian Marsh Fritillary Site	SAC	Out	Site considered too distant for significant effects to arise and no strategic impacts or pathways identified in RSS HRA
Dee Estuary	SPA/Ramsar	Out	Site considered too distant for significant effects to arise and strategic impacts considered by RSS HRA
Drigg Coast	SAC	Out	Site considered too distant for significant effects to arise and no strategic impacts or pathways identified in RSS HRA
Duddon Estuary	SPA/Ramsar	Out	Site considered too distant for significant effects to arise and no strategic impacts or pathways identified in RSS HRA
Duddon Mosses	SAC	Out	Site considered too distant for significant effects to arise and no strategic impacts or pathways identified in RSS HRA
Esthwaite Water	Ramsar	Out	Site considered too distant for significant effects to arise and no strategic impacts or pathways identified in RSS HRA
Irthinghead Mires	Ramsar	Out	Site considered too distant for significant effects to arise and no strategic impacts or pathways identified in RSS HRA
Lake District High Fells	SAC	Out	Site considered too distant for significant effects to arise and no strategic impacts or pathways identified in RSS HRA
Leighton Moss	SPA/Ramsar	Out	Site considered too distant for significant effects to arise and no strategic impacts or pathways identified in RSS HRA

Site Name	Designation	Screened in/out	Justification
Liverpool Bay	pSPA	Out	Site considered too distant for significant effects to arise and strategic impacts considered by RSS HRA
Manchester Mosses	SAC	Out	Site considered too distant for significant effects to arise and strategic impacts considered by RSS HRA
Martin Mere	SPA/Ramsar	Out	Site considered too distant for significant effects to arise and strategic impacts considered by RSS HRA
Mersey Estuary	SPA/Ramsar	Out	Site considered too distant for significant effects to arise and strategic impacts considered by RSS HRA
Mersey Narrows & Wirral Foreshore	pSPA	Out	Site considered too distant for significant effects to arise and strategic impacts considered by RSS HRA
Midland Meres & Mosses – Phase 1 & Phase 2	2 x Ramsar	Out	Site considered too distant for significant effects to arise and strategic impacts considered by RSS HRA
Moor House – Upper Teasdale	SAC	Out	Site considered too distant for significant effects to arise and no strategic impacts or pathways identified in RSS HRA
Morcombe Bay	SAC/Ramsar/SAC	Out	Site considered too distant for significant effects to arise and no strategic impacts or pathways identified in RSS HRA
Morcombe Bay Pavements	SAC	Out	Site considered too distant for significant effects to arise and no strategic impacts or pathways identified in RSS HRA
Naddle Forest	SAC	Out	Site considered too distant for significant effects to arise and no strategic impacts or pathways identified in RSS HRA
North Pennine Dales Meadows	SAC	Out	Site considered too distant for significant effects to arise and no strategic impacts or pathways identified in RSS HRA
North Pennine Moors	SAC/SPA	Out	Site considered too distant for significant effects to arise and strategic impacts considered by RSS HRA
Oak Mere	SAC	Out	Site considered too distant for significant effects to arise and no strategic impacts or pathways identified in RSS HRA
Peak District Moors (South Pennine Moors Phase 1)	SPA	Out	Although within Greater Manchester the site is considered too distant for significant effects to arise and no known pathways exist between SPA and Wigan.
Ribble & Alt Estuaries	SPA/Ramsar	Out	Site considered too distant for significant effects to arise and strategic impacts considered by RSS HRA
River Dee & Bala Lake	SAC	Out	Site considered too distant for significant effects to arise and no strategic impacts or pathways identified in RSS HRA

Site Name	Designation	Screened in/out	Justification
River Derwent & Bassenthwaite Lake	SAC	Out	Site considered too distant for significant effects to arise and strategic impacts considered by RSS HRA
River Eden	SAC	Out	Site considered too distant for significant effects to arise and no strategic impacts or pathways identified in RSS HRA
River Ehen	SAC	Out	Site considered too distant for significant effects to arise and no strategic impacts or pathways identified in RSS HRA
River Kent	SAC	Out	Site considered too distant for significant effects to arise and no strategic impacts or pathways identified in RSS HRA
Rixton Clay Pits	SAC	Out	Site considered too distant for significant effects to arise and no strategic impacts or pathways identified in RSS HRA
Rochdale Canal	SAC	Out	Although within Greater Manchester the site is considered too distant for significant effects to arise and no known pathways exist between SPA and Wigan.
Rostherne Mere	Ramsar	Out	Site considered too distant for significant effects to arise and no strategic impacts or pathways identified in RSS HRA
Roudsea Wood & Mosses	SAC	Out	Site considered too distant for significant effects to arise and no strategic impacts or pathways identified in RSS HRA
Sefton Coast	SAC	Out	Site considered too distant for significant effects to arise and no strategic impacts or pathways identified in RSS HRA
Solway Firth	SAC	Out	Site considered too distant for significant effects to arise and no strategic impacts or pathways identified in RSS HRA
South Pennine Moors	SAC	Out	Although within Greater Manchester the site is considered too distant for significant effects to arise and no known pathways exist between SPA and Wigan.
South Pennine Moors Phase 2	SPA	Out	Although within Greater Manchester the site is considered too distant for significant effects to arise and no known pathways exist between SPA and Wigan.
South Solway Mosses	SAC	Out	Site considered too distant for significant effects to arise
Subberthwaite, Blawith & Torver Low Commons	SAC	Out	Site considered too distant for significant effects to arise and no strategic impacts or pathways identified in RSS HRA
Tarn Moss	SAC	Out	Site considered too distant for significant effects to arise and no strategic impacts or pathways identified in RSS HRA

Site Name	Designation	Screened in/out	Justification
Tyne & Nent	SAC	Out	Site considered too distant for significant effects to arise and no strategic impacts or pathways identified in RSS HRA
Ullswater Oakwoods	SAC	Out	Site considered too distant for significant effects to arise and no strategic impacts or pathways identified in RSS HRA
Upper Solway Flats & Marshes	SPA/Ramsar	Out	Site considered too distant for significant effects to arise and no strategic impacts or pathways identified in RSS HRA
Walton Moss	SAC	Out	Site considered too distant for significant effects to arise and no strategic impacts or pathways identified in RSS HRA
Wast Water	SAC	Out	Site considered too distant for significant effects to arise and no strategic impacts or pathways identified in RSS HRA
West Midlands Mosses	SAC	Out	Site considered too distant for significant effects to arise and no strategic impacts or pathways identified in RSS HRA
Witherslack Mosses	SAC	Out	Site considered too distant for significant effects to arise and no strategic impacts or pathways identified in RSS HRA
Yewbarrow Woods	SAC	Out	Site considered too distant for significant effects to arise and no strategic impacts or pathways identified in RSS HRA

### APPENDIX 3 – List of Other Plans and Projects Considered within the Assessment

Plans Assessed under the Terms of the Habitats Regulations by GMEU

District	Plan	Outcome of Assessment
Rochdale MBC	SPD 'Energy and New Development'	No effect on European Sites
Rochdale MBC	SPD provision of Recreational Open Space in New Housing Developments	No effect on European Sites
Rochdale MBC	SPD Development of East Central Rochdale	No effect on European Sites
Rochdale MBC	SPD Biodiversity and Development	No effect on European Sites
Rochdale MBC	SPD Affordable Housing	No effect on European Sites
Manchester CC	SPD Providing for Housing Choice	No effect on European Sites
Bolton MBC	LDF Core Strategy Issues and Options	No effect on European Sites
Trafford MBC	LDF Core Strategy Issues and Options	No effect on European Sites
Bury MBC	LDF Core Strategy Issues and Options	No effect on European Sites
Oldham MBC	LDF Broad Locations for Preferred Options	Potential Effects on Rochdale Canal SAC
Wigan MBC	LDF Core Strategy Preferred Options	No identified effect on European Sites at this stage – further assessment may be needed at a later stage